



## UK Office

### Everest Biotech Ltd

Cherwell Innovation Centre  
77 Heyford Park  
Upper Heyford  
Oxfordshire  
OX25 5HD  
UK

Enquiries:

[info@everestbiotech.com](mailto:info@everestbiotech.com)

Sales:

[sales@everestbiotech.com](mailto:sales@everestbiotech.com)

Tech support:

[support@everestbiotech.com](mailto:support@everestbiotech.com)

Tel: +44 (0)1869 238326

[www.everestbiotech.com](http://www.everestbiotech.com)

**Research Use Only. Not for  
diagnostic or therapeutic use.**

## EB09284 - Goat Anti-DLX5 Antibody

Size: 100µg specific antibody in 200µl



### Target Protein

**Principal Names:** DLX5, distal-less homeobox 5, distal-less homeo box 5

**Official Symbol:** DLX5

**Accession Number(s):** NP\_005212.1

**Human GeneID(s):** [1749](#)

**Non-Human GeneID(s):** 13395 (mouse), 25431 (rat)

### Immunogen

Peptide with sequence C-AYNRVPSATNQPEK, from the internal region of the protein sequence according to NP\_005212.1.

Please note the [peptide](#) is available for sale.

### Purification and Storage

Purified from goat serum by ammonium sulphate precipitation followed by antigen affinity chromatography using the immunizing peptide.

Supplied at 0.5 mg/ml in Tris saline, 0.02% sodium azide, pH7.3 with 0.5% bovine serum albumin.

Aliquot and store at -20°C. Minimize freezing and thawing.

### Applications Tested

**Peptide ELISA:** antibody detection limit dilution 1:32000.

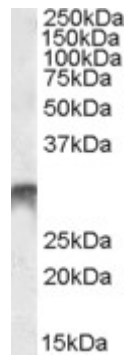
**Western blot:** Approx 30kDa band observed in Human Bone Marrow lysates (calculated MW of 31.5kDa according to NP\_005212.1). The observed molecular weight corresponds to earlier findings in literature with different antibodies (Lee et al, J Biol Chem. 2003 Sep 5;278(36):34387-94; PMID: 12815054). Recommended concentration: 1-3µg/ml. Primary incubation was 1 hour.

**IHC:** Paraffin embedded Human Placenta. Recommended concentration: 2.5µg/ml.

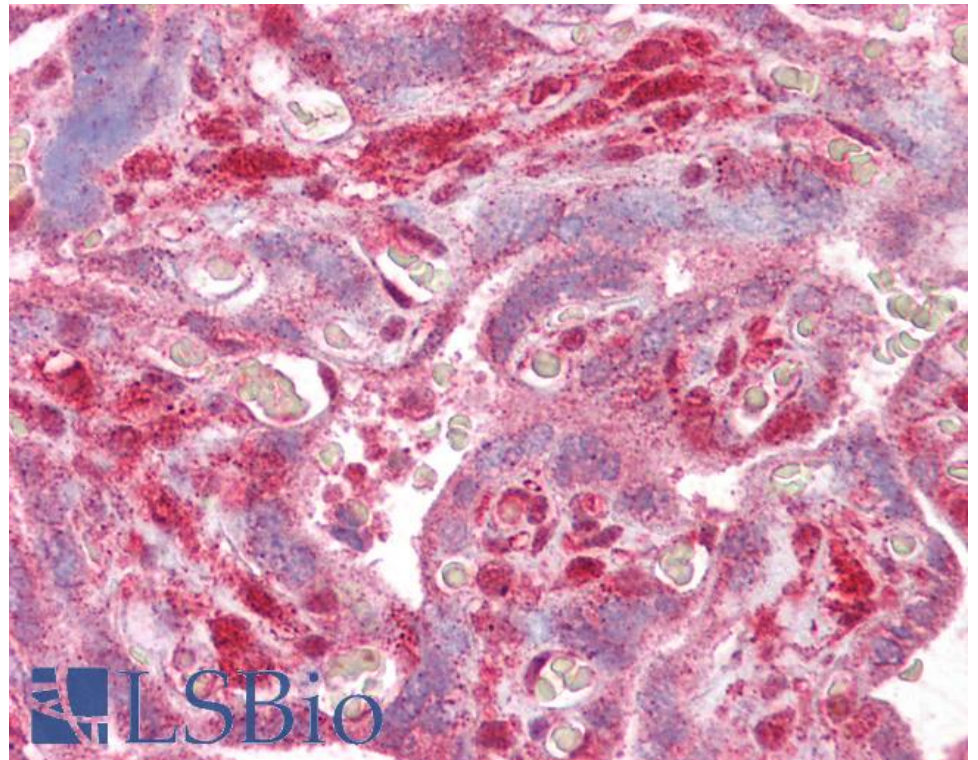
### Species Reactivity

**Tested:** Human

**Expected from sequence similarity:** Human, Mouse, Rat, Cow



EB09284 (1µg/ml) staining of Human Bone Marrow lysate (35µg protein in RIPA buffer). Detected by chemiluminescence.



EB09284 (2.5µg/ml) staining of paraffin embedded Human Placenta. Steamed antigen retrieval with citrate buffer pH 6, AP-staining.