



UK Office

Everest Biotech Ltd

Cherwell Innovation Centre
77 Heyford Park
Upper Heyford
Oxfordshire
OX25 5HD
UK

Enquiries:

info@everestbiotech.com

Sales:

sales@everestbiotech.com

Tech support:

support@everestbiotech.com

Tel: +44 (0)1869 238326

Fax: +44 (0)1869 238327

US Office

Everest Biotech c/o Abcore

405 Maple Street, Suite A106
Ramona,
CA 92065
USA

Inquiries:

info@everestbiotech.com

Sales:

usasales@everestbiotech.com

Tech support:

support@everestbiotech.com

Tel: 888-320-4628 (toll-free)

Fax: 888-841-9041

www.everestbiotech.com

**Research Use Only. Not for
diagnostic or therapeutic use.**

EB12121 - Goat Anti-DMTF1 (aa629-642) Antibody

Size: 100µg specific antibody in 200µl



Target Protein

Principal Names: DMTF1, cyclin D binding myb-like transcription factor 1, DMP1, DMTF, hDMP1, cyclin D-binding Myb-like protein, cyclin-D-binding Myb-like transcription factor 1, cyclin-D-interacting Myb-like protein 1, hDMTF1

Official Symbol: DMTF1

Accession Number(s): NP_066968.3; NP_001135798.1

Human GeneID(s): [9988](#)

Non-Human GeneID(s): 23857 (mouse)

Important Comments: This antibody is expected to recognize both reported isoforms (NP_066968.3; NP_001135798.1). Reported variants represent identical protein: NP_066968.3, NP_001135799.1

Immunogen

Peptide with sequence C-DAHVSKFSDQNSTE, from the internal region of the protein sequence according to NP_066968.3; NP_001135798.1.

Please note the [peptide](#) is available for sale.

Purification and Storage

Purified from goat serum by ammonium sulphate precipitation followed by antigen affinity chromatography using the immunizing peptide.

Supplied at 0.5 mg/ml in Tris saline, 0.02% sodium azide, pH7.3 with 0.5% bovine serum albumin.

Aliquot and store at -20°C. Minimize freezing and thawing.

Applications Tested

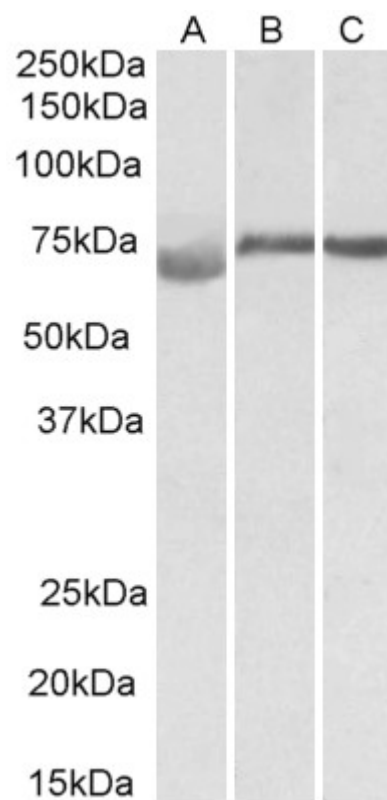
Peptide ELISA: antibody detection limit dilution 1:8000.

Western blot: Approx 70-75kDa band observed in Human, Mouse and Rat Testis lysates (calculated MW of 74.9kDa according to NP_001135799.1). Recommended concentration: 1-3µg/ml.

Species Reactivity

Tested: Human, Mouse, Rat

Expected from sequence similarity: Human, Mouse, Dog, Pig, Cow



EB12121 (1 μ g/ml) staining of Human (A), Mouse (B) and Rat (C) Testis lysate (35 μ g protein in RIPA buffer).
Primary incubation was 1 hour. Detected by chemiluminescence.