



UK Office

Everest Biotech Ltd

Cherwell Innovation Centre
77 Heyford Park
Upper Heyford
Oxfordshire
OX25 5HD
UK

Enquiries:

info@everestbiotech.com

Sales:

sales@everestbiotech.com

Tech support:

support@everestbiotech.com

Tel: +44 (0)1869 238326

Fax: +44 (0)1869 238327

US Office

Everest Biotech c/o Abcore

405 Maple Street, Suite A106
Ramona,
CA 92065
USA

Inquiries:

info@everestbiotech.com

Sales:

usasales@everestbiotech.com

Tech support:

support@everestbiotech.com

Tel: 888-320-4628 (toll-free)

Fax: 888-841-9041

www.everestbiotech.com

**Research Use Only. Not for
diagnostic or therapeutic use.**

EB11846 - Goat Anti-Dnajc5 (aa177-191) Antibody

Size: 100µg specific antibody in 200µl



Target Protein

Principal Names: 2610314I24Rik, AU018536, Csp, cysteine string protein, DnaJ (Hsp40) homolog, subfamily C, member 5, dnaJ homolog subfamily C member 5, Dnajc5

Official Symbol: Dnajc5

Accession Number(s): NP_058055.1

Human GeneID(s): [80331](#)

Non-Human GeneID(s): 13002 (mouse), 79130 (rat)

Immunogen

Peptide with sequence C-SATETTQLTADSHPS, from the C Terminus of the protein sequence according to NP_058055.1.

Please note the [peptide](#) is available for sale.

Purification and Storage

Purified from goat serum by ammonium sulphate precipitation followed by antigen affinity chromatography using the immunizing peptide.

Supplied at 0.5 mg/ml in Tris saline, 0.02% sodium azide, pH7.3 with 0.5% bovine serum albumin.

Aliquot and store at -20°C. Minimize freezing and thawing.

Applications Tested

Peptide ELISA: antibody detection limit dilution 1:64000.

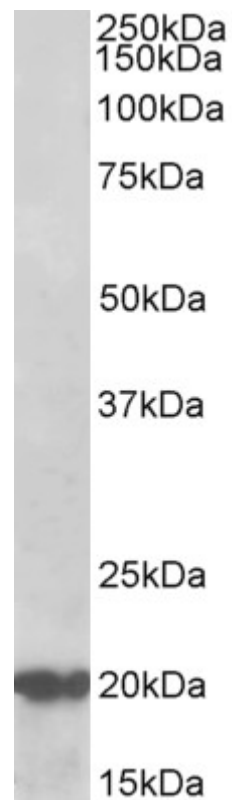
Western blot: Approx 20kDa band observed in Human Brain (Cerebellum) lysates (calculated MW of 22.1kDa according to NP_058055.1). Recommended concentration: 0.5-1.5µg/ml. Preliminary testing was unsuccessful on Mouse and Rat Brain for this particular batch.

IHC: Paraffin embedded Human Skeletal Muscle. Recommended concentration: 5µg/ml.

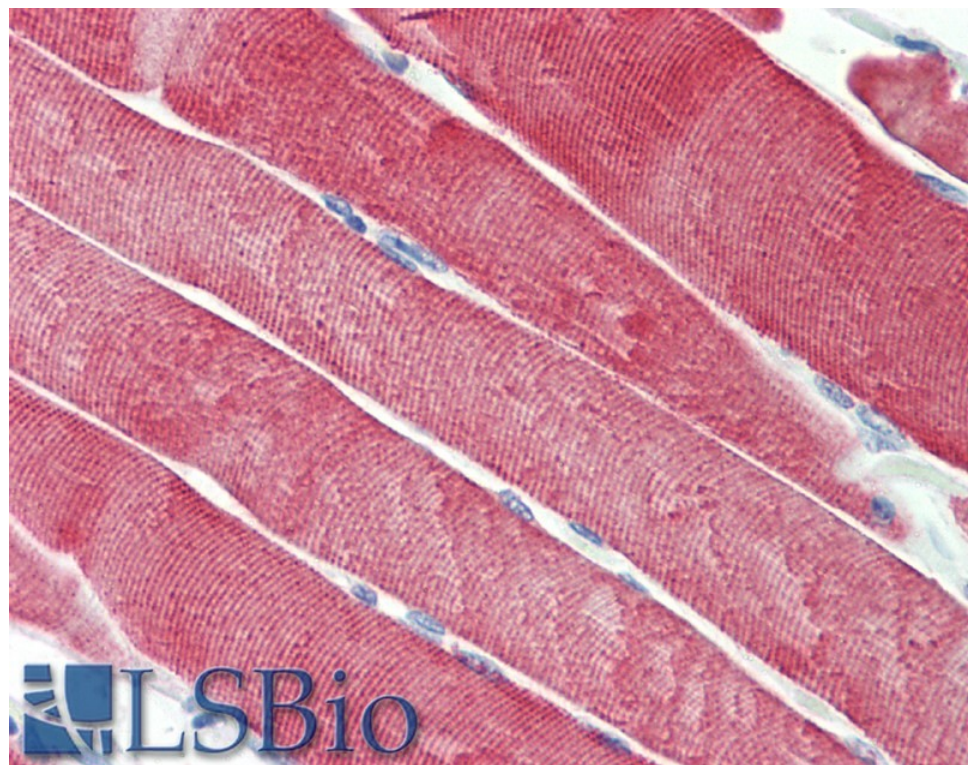
Species Reactivity

Tested: Human

Expected from sequence similarity: Human, Mouse, Rat, Dog, Cow



EB11846 (0.5 μ g/ml) staining of Human Cerebellum lysate (35 μ g protein in RIPA buffer). Primary incubation was 1 hour. Detected by chemiluminescence.



EB11846 (5 μ g/ml) staining of paraffin embedded Human Skeletal Muscle. Steamed antigen retrieval with citrate buffer pH 6, AP-staining.