



UK Office

Everest Biotech Ltd

Cherwell Innovation Centre
77 Heyford Park
Upper Heyford
Oxfordshire
OX25 5HD
UK

Enquiries:

info@everestbiotech.com

Sales:

sales@everestbiotech.com

Tech support:

support@everestbiotech.com

Tel: +44 (0)1869 238326

Fax: +44 (0)1869 238327

US Office

Everest Biotech c/o Abcore

405 Maple Street, Suite A106
Ramona,
CA 92065
USA

Inquiries:

info@everestbiotech.com

Sales:

usasales@everestbiotech.com

Tech support:

support@everestbiotech.com

Tel: 888-320-4628 (toll-free)

Fax: 888-841-9041

www.everestbiotech.com

**Research Use Only. Not for
diagnostic or therapeutic use.**

EB05183 - Goat Anti-DOCK1 Antibody

Size: 100µg specific antibody in 200µl



Target Protein

Principal Names: DOCK1, DOCK180, dedicator of cyto-kinesis 1, RP11-82L9.1, ced5

Official Symbol: DOCK1

Accession Number(s): NP_001371.1

Human GeneID(s): [1793](#)

Non-Human GeneID(s): 330662 (mouse)

Immunogen

Peptide with sequence C-TTRKQTSVDSGIVQ, from the C Terminus of the protein sequence according to NP_001371.1.

Please note the [peptide](#) is available for sale.

Purification and Storage

Purified from goat serum by ammonium sulphate precipitation followed by antigen affinity chromatography using the immunizing peptide.

Supplied at 0.5 mg/ml in Tris saline, 0.02% sodium azide, pH7.3 with 0.5% bovine serum albumin.

Aliquot and store at -20°C. Minimize freezing and thawing.

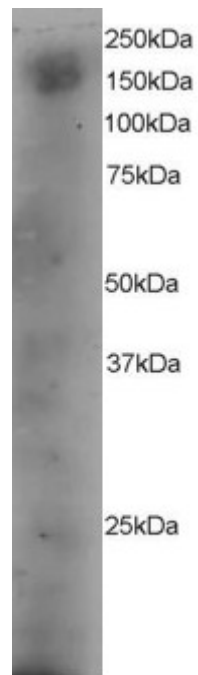
Applications Tested

Western blot: Approx 150-200kDa band seen in A431 cell lysate. Recommended for use at 3-4µg/ml.

Species Reactivity

Tested: Human

Expected from sequence similarity: Human, Mouse, Rat, Dog, Pig, Cow



EB05183 staining (4 μ g/ml) of A431 lysate (RIPA buffer, 35 μ g total protein per lane). Primary incubated for 12 hour. Detected by western blot using chemiluminescence.