



UK Office

Everest Biotech Ltd

Cherwell Innovation Centre
77 Heyford Park
Upper Heyford
Oxfordshire
OX25 5HD
UK

Enquiries:

info@everestbiotech.com

Sales:

sales@everestbiotech.com

Tech support:

support@everestbiotech.com

Tel: +44 (0)1869 238326

Fax: +44 (0)1869 238327

US Office

Everest Biotech c/o Abcore

405 Maple Street, Suite A106
Ramona,
CA 92065
USA

Inquiries:

info@everestbiotech.com

Sales:

usasales@everestbiotech.com

Tech support:

support@everestbiotech.com

Tel: 888-320-4628 (toll-free)

Fax: 888-841-9041

www.everestbiotech.com

**Research Use Only. Not for
diagnostic or therapeutic use.**

EB05210 - Goat Anti-DOK3 Antibody

Size: 100µg specific antibody in 200µl



Target Protein

Principal Names: DOK3, Docking Protein 3, FLJ22570, FLJ39939, DOKL, FLJ39939, Dok-like protein

Official Symbol: DOK3

Accession Number(s): NP_079148.2

Human GeneID(s): [79930](#)

Non-Human GeneID(s): 27261 (mouse)

Immunogen

Peptide with sequence TRERRKGPAPCDRP, from the C Terminus of the protein sequence according to NP_079148.2.

Please note the [peptide](#) is available for sale.

Purification and Storage

Purified from goat serum by ammonium sulphate precipitation followed by antigen affinity chromatography using the immunizing peptide.

Supplied at 0.5 mg/ml in Tris saline, 0.02% sodium azide, pH7.3 with 0.5% bovine serum albumin.

Aliquot and store at -20°C. Minimize freezing and thawing.

Applications Tested

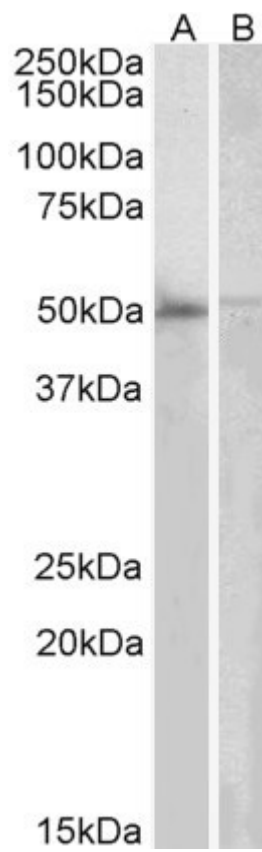
Peptide ELISA: antibody detection limit dilution 1:128000.

Western blot: Approx 50kDa band observed in Human Bone marrow and Human Peripheral Blood Mononucleocytes lysates (calculated MW of 50.3kDa according to NP_079148.2). Recommended concentration: 2-6µg/ml.

Species Reactivity

Tested: Human

Expected from sequence similarity: Human, Mouse, Rat, Cow



EB05210 (2 μ g/ml) staining of Human Bone Marrow (A) and PBL (B) lysates (35 μ g protein in RIPA buffer).
Primary incubation was 1 hour. Detected by chemiluminescence.