



## UK Office

### Everest Biotech Ltd

Cherwell Innovation Centre  
77 Heyford Park  
Upper Heyford  
Oxfordshire  
OX25 5HD  
UK

Enquiries:

[info@everestbiotech.com](mailto:info@everestbiotech.com)

Sales:

[sales@everestbiotech.com](mailto:sales@everestbiotech.com)

Tech support:

[support@everestbiotech.com](mailto:support@everestbiotech.com)

Tel: +44 (0)1869 238326

Fax: +44 (0)1869 238327

## US Office

### Everest Biotech c/o Abcore

405 Maple Street, Suite A106  
Ramona,  
CA 92065  
USA

Inquiries:

[info@everestbiotech.com](mailto:info@everestbiotech.com)

Sales:

[usasales@everestbiotech.com](mailto:usasales@everestbiotech.com)

Tech support:

[support@everestbiotech.com](mailto:support@everestbiotech.com)

Tel: 888-320-4628 (toll-free)

Fax: 888-841-9041

[www.everestbiotech.com](http://www.everestbiotech.com)

**Research Use Only. Not for  
diagnostic or therapeutic use.**

## EB07258 - Goat Anti-Doublecortin / DCX Antibody

Size: 100µg specific antibody in 200µl



### Target Protein

**Principal Names:** DCX, doublecortin, lissencephaly, X-linked (doublecortin), RP5-914P14.1, DBCN, DC, LISX, SCLH, XLIS, OTTHUMP00000062892, doublecortin, doublin, lissencephalin-X

**Official Symbol:** DCX

**Accession Number(s):** NP\_000546.2; NP\_835365.1; NP\_835364.1; NP\_835366.1

**Human GeneID(s):** [1641](#)

**Important Comments:** This antibody is expected to recognise isoform a (NP\_000546.2), isoform b (NP\_835365.1), and isoform c (NP\_835364.1 and NP\_835366.1).

### Immunogen

Peptide with sequence C-KASPTPQKTSKSPG, from the internal region of the protein sequence according to NP\_000546.2; NP\_835365.1; NP\_835364.1; NP\_835366.1.

Please note the [peptide](#) is available for sale.

### Purification and Storage

Purified from goat serum by ammonium sulphate precipitation followed by antigen affinity chromatography using the immunizing peptide.

Supplied at 0.5 mg/ml in Tris saline, 0.02% sodium azide, pH7.3 with 0.5% bovine serum albumin.

Aliquot and store at -20°C. Minimize freezing and thawing.

### Applications Tested

**Peptide ELISA:** antibody detection limit dilution 1:128000.

**Western blot:** Approx 45kDa band observed in Mouse fetal Brain lysates (calculated MW of 40.6kDa according to Mouse NP\_001103692.1). Recommended concentration: 0.003-0.01µg/ml. Primary incubation 1 hour at room temperature.

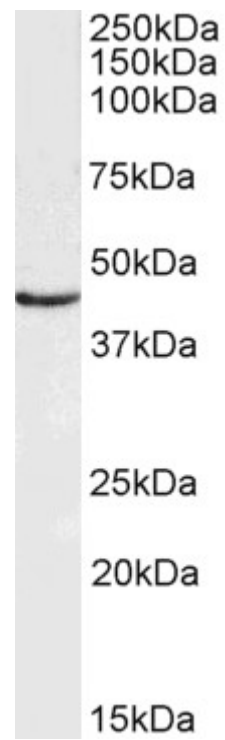
**IHC:** Paraffin embedded Human Brain (Cortex). Recommended concentration: 7µg/ml.

**Immunofluorescence:** Strong expression of the protein seen in the cytoplasm of NIH3T3 cells. Recommended concentration: 5µg/ml.

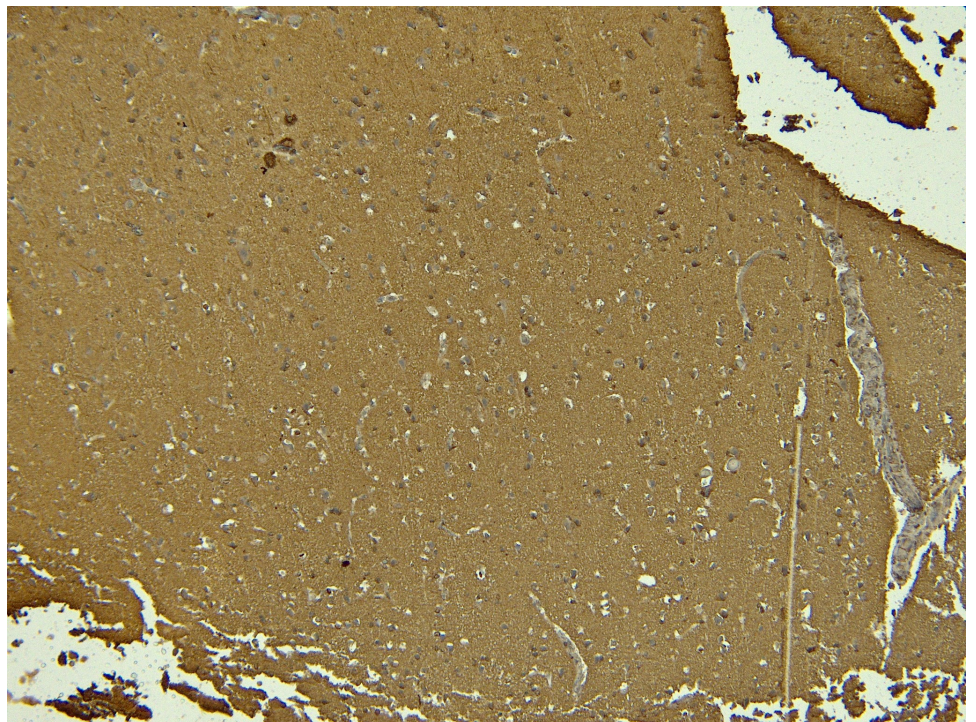
### Species Reactivity

**Tested:** Human, Mouse

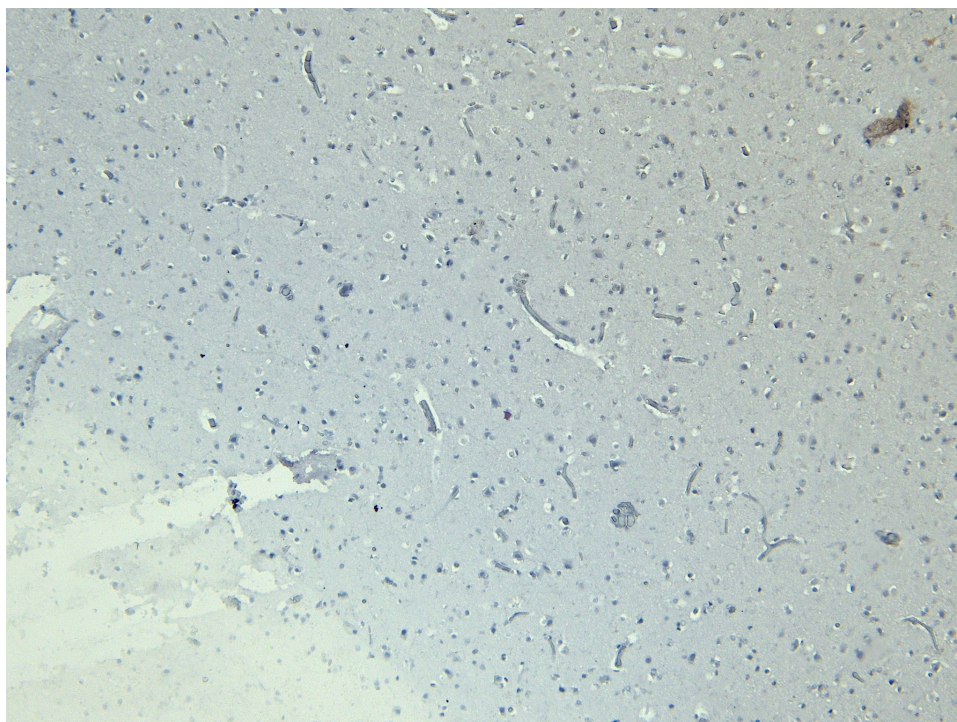
**Expected from sequence similarity:** Human; Mouse, Rat, Dog, Cat



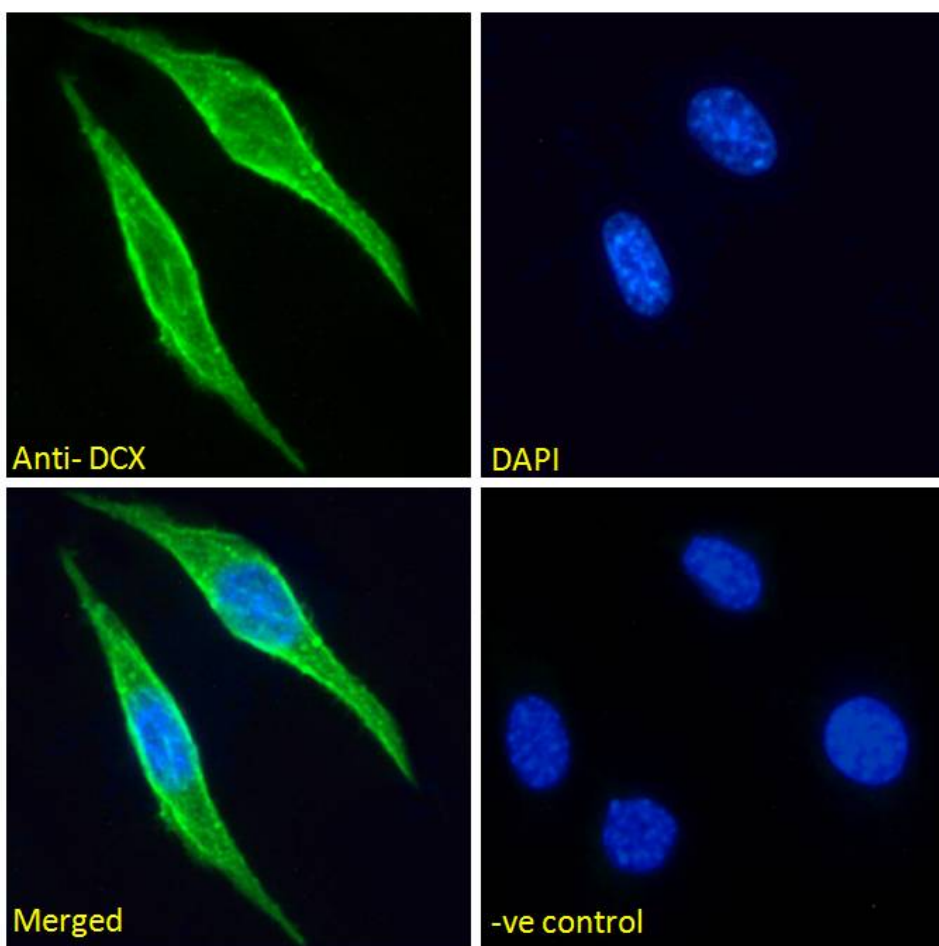
EB07258 (0.003 $\mu$ g/ml) staining of Mouse fetal Brain lysate (35 $\mu$ g protein in RIPA buffer). Detected by chemiluminescence.



EB07258 (7 $\mu$ g/ml) staining of paraffin embedded Human Cortex. Heat induced antigen retrieval with citrate buffer pH 6, HRP-staining.



EB07258 Negative Control showing staining of paraffin embedded Human Cortex, with no primary antibody.



EB07258 Immunofluorescence analysis of paraformaldehyde fixed NIH3T3 cells, permeabilized with 0.15% Triton. Primary incubation 1hr (5ug/ml) followed by Alexa Fluor 488 secondary antibody (2ug/ml), showing cytoplasmic staining. The nuclear stain is DAPI (blue). Negative control: Unimmunized goat IgG (5ug/ml) followed by Alexa Fluor 488 secondary antibody (2ug/ml).