



UK Office

Everest Biotech Ltd

Cherwell Innovation Centre
77 Heyford Park
Upper Heyford
Oxfordshire
OX25 5HD
UK

Enquiries:

info@everestbiotech.com

Sales:

sales@everestbiotech.com

Tech support:

support@everestbiotech.com

Tel: +44 (0)1869 238326

Fax: +44 (0)1869 238327

US Office

Everest Biotech c/o Abcore

405 Maple Street, Suite A106
Ramona,
CA 92065
USA

Inquiries:

info@everestbiotech.com

Sales:

usasales@everestbiotech.com

Tech support:

support@everestbiotech.com

Tel: 888-320-4628 (toll-free)

Fax: 888-841-9041

www.everestbiotech.com

**Research Use Only. Not for
diagnostic or therapeutic use.**

EB09706 - Goat Anti-DTX3 Antibody

Size: 100µg specific antibody in 200µl



Target Protein

Principal Names: DTX3, deltex 3 homolog (Drosophila), FLJ34766, MGC138863, MGC138864, RNF154, deltex 3 homolog

Official Symbol: DTX3

Accession Number(s): NP_848597.1

Human GeneID(s): [196403](#)

Non-Human GeneID(s): 80904 (mouse), 500847 (rat)

Immunogen

Peptide with sequence C-KNKVTVSKPVWD, from the internal region (near N Terminus) of the protein sequence according to NP_848597.1.

Please note the [peptide](#) is available for sale.

Purification and Storage

Purified from goat serum by ammonium sulphate precipitation followed by antigen affinity chromatography using the immunizing peptide.

Supplied at 0.5 mg/ml in Tris saline, 0.02% sodium azide, pH7.3 with 0.5% bovine serum albumin.

Aliquot and store at -20°C. Minimize freezing and thawing.

Applications Tested

Peptide ELISA: antibody detection limit dilution 1:8000.

Western blot: Approx 90kDa band observed in Mouse Fetal Brain lysates and in lysates of cell line NIH3T3 (calculated MW of 38.0kDa according to Human NP_848597.1 and 37.98kDa to Mouse NP_109639.1). The observed much higher molecular weight corresponds to earlier findings in literature with different antibodies (Takeyama et al, J Biol Chem. 2003 Jun13;278(24):21930-7.; PMID: 12670957). Recommended concentration: 0.2-0.5µg/ml.

IHC: Paraffin embedded Human Brain (Cortex). Recommended concentration: 10µg/ml.

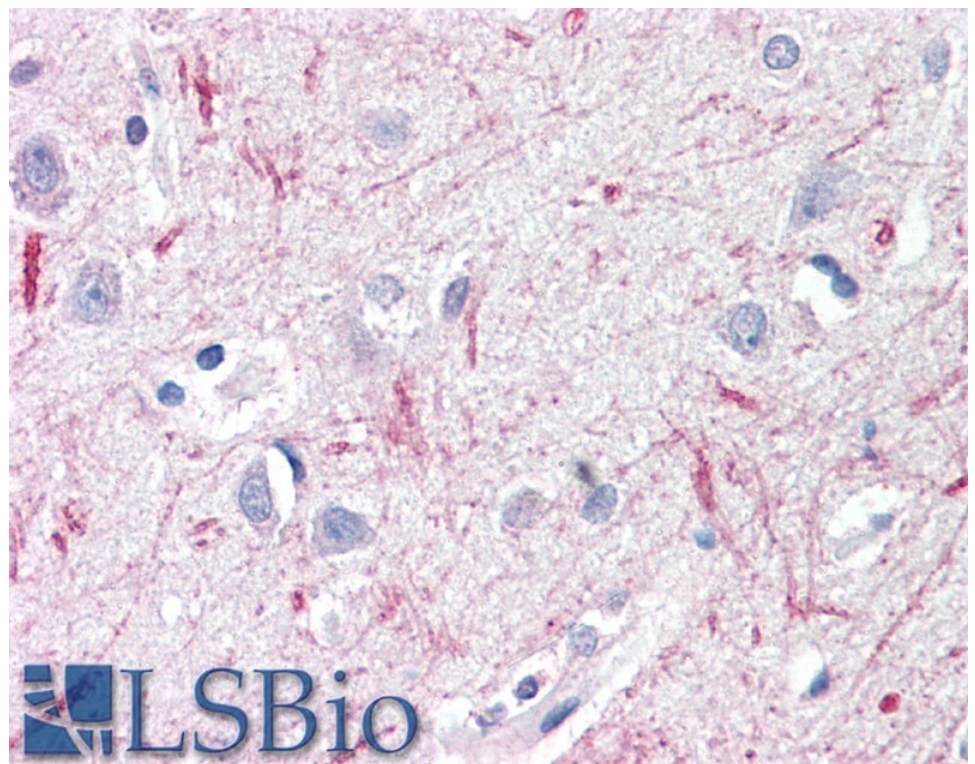
Species Reactivity

Tested: Mouse, Human

Expected from sequence similarity: Human, Mouse, Rat, Cow



EB09706 (0.3 μ g/ml) staining of NIH3T3 lysate (35 μ g protein in RIPA buffer). Primary incubation was 1 hour.
Detected by chemiluminescence.



EB09706 (10 μ g/ml) staining of paraffin embedded Human Cortex. Steamed antigen retrieval with citrate buffer pH 6, AP-staining.