

UK Office

Everest Biotech Ltd

Cherwell Innovation Centre
77 Heyford Park
Upper Heyford
Oxfordshire
OX25 5HD
UK

Enquiries:

info@everestbiotech.com

Sales:

sales@everestbiotech.com

Tech support:

support@everestbiotech.com

Tel: +44 (0)1869 238326

www.everestbiotech.com

**Research Use Only. Not for
diagnostic or therapeutic use.**

EB08519 - Goat Anti-Dual oxidase 1 Antibody

Size: 100µg specific antibody in 200µl



Target Protein

Principal Names: DUOX1, dual oxidase 1, LNOX1, MGC138840, MGC138841, NOXEF1, THOX1, NADPH thyroid oxidase 1, flavoprotein NADPH oxidase, nicotinamide adenine dinucleotide phosphate oxidase

Official Symbol: DUOX1

Accession Number(s): NP_059130.2 ; NP_787954.1

Human GeneID(s): [53905](#)

Important Comments: This antibody is expected to recognise both reported isoforms (NP_059130.2 ; NP_787954.1) which are identical;

Immunogen

Peptide with sequence EKFQRSC LHQTVQ, from the internal region of the protein sequence according to NP_059130.2 ; NP_787954.1.

Please note the [peptide](#) is available for sale.

Purification and Storage

Purified from goat serum by ammonium sulphate precipitation followed by antigen affinity chromatography using the immunizing peptide.

Supplied at 0.5 mg/ml in Tris saline, 0.02% sodium azide, pH7.3 with 0.5% bovine serum albumin.

Aliquot and store at -20°C. Minimize freezing and thawing.

Applications Tested

Peptide ELISA: antibody detection limit dilution 1:32000.

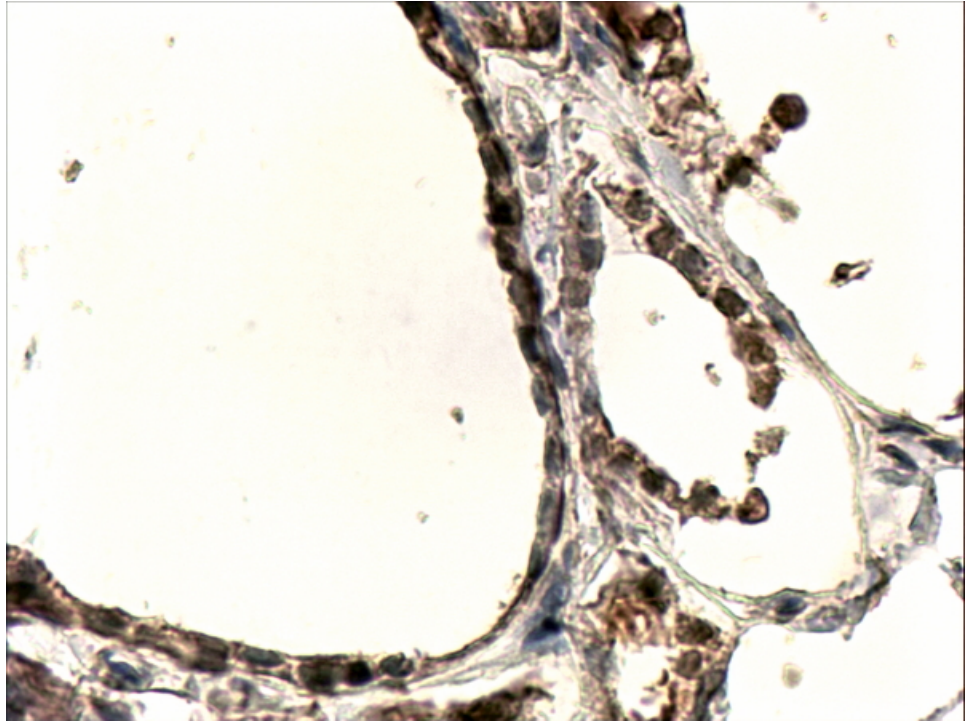
Western blot: Preliminary experiments in Human Placenta and Thyroid Gland lysates gave no specific signal but low background (at antibody concentration up to 0.5µg/ml). We would appreciate any feedback from people in the field - have any results been reported with other antibodies/lysates?

IHC: In paraffin embedded Human Thyroid shows staining of membranes in epithelial cells of the gland. Recommended concentration, 4-6µg/ml.

Species Reactivity

Tested: Human

Expected from sequence similarity: Human



EB08519 (4 μ g/ml) staining of paraffin embedded Human Thyroid Gland. Steamed antigen retrieval with Tris/EDTA buffer pH 9, HRP-staining.