



## UK Office

### Everest Biotech Ltd

Cherwell Innovation Centre  
77 Heyford Park  
Upper Heyford  
Oxfordshire  
OX25 5HD  
UK

Enquiries:

[info@everestbiotech.com](mailto:info@everestbiotech.com)

Sales:

[sales@everestbiotech.com](mailto:sales@everestbiotech.com)

Tech support:

[support@everestbiotech.com](mailto:support@everestbiotech.com)

Tel: +44 (0)1869 238326

Fax: +44 (0)1869 238327

## US Office

### Everest Biotech c/o Abcore

405 Maple Street, Suite A106  
Ramona,  
CA 92065  
USA

Inquiries:

[info@everestbiotech.com](mailto:info@everestbiotech.com)

Sales:

[usasales@everestbiotech.com](mailto:usasales@everestbiotech.com)

Tech support:

[support@everestbiotech.com](mailto:support@everestbiotech.com)

Tel: 888-320-4628 (toll-free)

Fax: 888-841-9041

[www.everestbiotech.com](http://www.everestbiotech.com)

**Research Use Only. Not for  
diagnostic or therapeutic use.**

## EB08519 - Goat Anti-Dual oxidase 1 Antibody

Size: 100µg specific antibody in 200µl



### Target Protein

**Principal Names:** DUOX1, dual oxidase 1, LNOX1, MGC138840, MGC138841, NOXEF1, THOX1, NADPH thyroid oxidase 1, flavoprotein NADPH oxidase, nicotinamide adenine dinucleotide phosphate oxidase

**Official Symbol:** DUOX1

**Accession Number(s):** NP\_059130.2 ; NP\_787954.1

**Human GeneID(s):** [53905](#)

**Important Comments:** This antibody is expected to recognise both reported isoforms (NP\_059130.2 ; NP\_787954.1) which are identical;

### Immunogen

Peptide with sequence EKFQRSCLHQTVQ, from the internal region of the protein sequence according to NP\_059130.2 ; NP\_787954.1.

Please note the [peptide](#) is available for sale.

### Purification and Storage

Purified from goat serum by ammonium sulphate precipitation followed by antigen affinity chromatography using the immunizing peptide.

Supplied at 0.5 mg/ml in Tris saline, 0.02% sodium azide, pH7.3 with 0.5% bovine serum albumin.

Aliquot and store at -20°C. Minimize freezing and thawing.

### Applications Tested

**Peptide ELISA:** antibody detection limit dilution 1:32000.

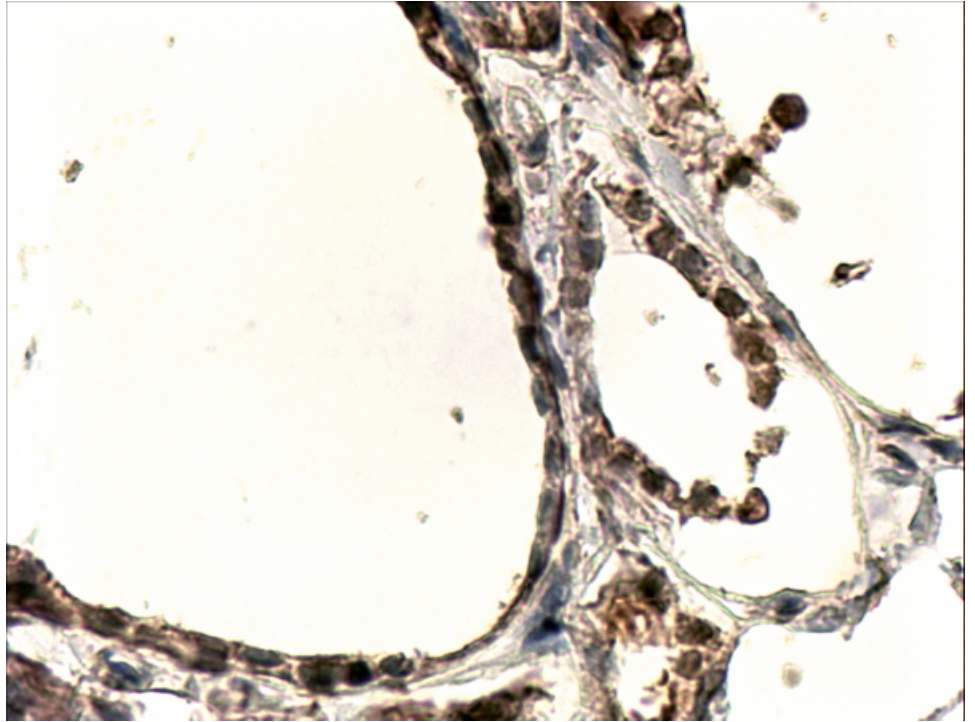
**Western blot:** Preliminary experiments in Human Placenta and Thyroid Gland lysates gave no specific signal but low background (at antibody concentration up to 0.5µg/ml). We would appreciate any feedback from people in the field - have any results been reported with other antibodies/lysates?

**IHC:** In paraffin embedded Human Thyroid shows staining of membranes in epithelial cells of the gland. Recommended concentration, 4-6µg/ml.

### Species Reactivity

**Tested:** Human

**Expected from sequence similarity:** Human



EB08519 (4µg/ml) staining of paraffin embedded Human Thyroid Gland. Steamed antigen retrieval with Tris/EDTA buffer pH 9, HRP-staining.