



Everest Biotech Ltd  
Cherwell Innovation Centre  
77 Heyford Park  
Upper Heyford  
Oxfordshire  
OX25 5HD, United Kingdom

[everestbiotech.com](http://everestbiotech.com)

[sales@everestbiotech.com](mailto:sales@everestbiotech.com)

[support@everestbiotech.com](mailto:support@everestbiotech.com)

Tel +44 1869 238326

Fax +44 1869 238327

**Research Use Only. Not for diagnostic or therapeutic use.**

Storage: For long-term storage keep aliquots at -20°C. (Store no longer than 12 months at 4°C). Minimize freezing and thawing.

## EB06940 - Goat Anti-Duffy / FY / DARC Antibody

Size: 100µg specific antibody in 200µl



### Target Protein

**Principal Names:** OTTHUMP00000035294, OTTHUMP00000035293, Fy glycoprotein, WBCQ1, GpFy, Dfy, Glycoprotein D, Duffy blood group antigen, Duffy blood group, chemokine receptor, OTTHUMP00000060081, FY, CD234, CTA-134P22.3, GPD, CCBP1, Duffy blood group, HGNC:4035, DARC, FY

**Official Symbol:** DARC

**Accession Number(s):** NP\_001116423.1; NP\_002027.2

**Human GeneID(s):** [2532](#)

**Important Comments:** This antibody is expected to recognize both reported isoforms (NP\_001116423.1; NP\_002027.2).

### Immunogen

Peptide with sequence HRAELSPSTENSSQLDFED-C, from the N Terminus of the protein sequence according to NP\_001116423.1; NP\_002027.2.

Please note the [peptide](#) is available for sale.

### Purification and Storage

Purified from goat serum by ammonium sulphate precipitation followed by antigen affinity chromatography using the immunizing peptide.

Supplied at 0.5 mg/ml in Tris saline, 0.02% sodium azide, pH7.3 with 0.5% bovine serum albumin.

Aliquot and store at -20°C. Minimize freezing and thawing.

### Applications Tested

**Peptide ELISA:** antibody detection limit dilution 1:16000.

**Western blot:** Approx 35kDa band observed in human kidney and human liver lysates (calculated MW of 35.6kDa according to NP\_002027.2). Recommended concentration: 0.1-0.3µg/ml.

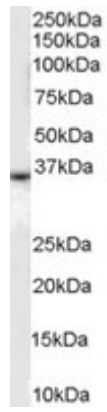
**IHC:** In paraffin embedded human kidney, stains epithelial cells of renal tubules and endothelial cells of vessels. The granular staining is compatible with the endoplasmic reticulum association of the protein. This antibody has also been successfully used on Human Lung showing endothelial staining. Recommended concentration, 3µg/ml.

**Flow cytometry:** A customer has reported successful staining of HEK293S-TetR transfected with DARC receptor at a dilution of 1/1000.

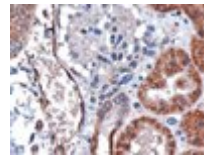
### Species Reactivity

**Tested:** Human

**Expected from sequence similarity:** Human



EB06940 (0.1µg/ml) staining of human liver lysate (35µg protein in RIPA buffer). Primary incubation was 1 hour.  
Detected by chemiluminescence.



EB06940 (3µg/ml) staining of paraffin embedded human kidney. Microwaved antigen retrieval with citrate buffer  
pH 6, HRP-staining.