



Everest Biotech Ltd
Cherwell Innovation Centre
77 Heyford Park
Upper Heyford
Oxfordshire
OX25 5HD, United Kingdom

everestbiotech.com

sales@everestbiotech.com

support@everestbiotech.com

Tel +44 1869 238326

Fax +44 1869 238327

Research Use Only. Not for diagnostic or therapeutic use.

Storage: For long-term storage keep aliquots at -20°C. (Store no longer than 12 months at 4°C). Minimize freezing and thawing.

EB05318 - Goat Anti-DUSP8 / HVH5 Antibody

Size: 100µg specific antibody in 200µl



Target Protein

Principal Names: OTTHUMP00000164487, FLJ42958, FLJ42476, C11orf81, serine/threonine specific protein phosphatase, H1 phosphatase, vaccinia virus homolog, HVH-5, HVH8, HB5, dual specificity phosphatase 8, DUSP8

Official Symbol: DUSP8

Accession Number(s): NP_004411.2

Human GeneID(s): [1850](#)

Non-Human GeneID(s): 18218 (mouse)

Important Comments: This antibody is also expected to recognise the hypothetical human protein similar to dual specificity phosphatase 8 (XM_114902), which is virtually identical.

Immunogen

Peptide with sequence *AGDRLPRKVMDAK-C, from the N Terminus of the protein sequence according to NP_004411.2.

Please note the [peptide](#) is available for sale.

Purification and Storage

Purified from goat serum by ammonium sulphate precipitation followed by antigen affinity chromatography using the immunizing peptide.

Supplied at 0.5 mg/ml in Tris saline, 0.02% sodium azide, pH7.3 with 0.5% bovine serum albumin.

Aliquot and store at -20°C. Minimize freezing and thawing.

Applications Tested

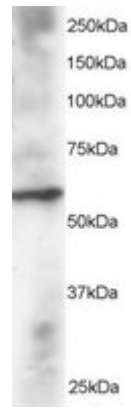
Peptide ELISA: antibody detection limit dilution 1:4000.

Western blot: Approx 60-65kDa bands seen in Human Heart lysate. Recommended for use at 1-3µg/ml.

Species Reactivity

Tested: Human

Expected from sequence similarity: Human, Mouse, Rat, Cow



EB05318 staining (2 μ g/ml) of Human Heart lysate (RIPA buffer, 30 μ g total protein per lane). Primary incubated for 12 hour. Detected by western blot using chemiluminescence.