

## UK Office

### Everest Biotech Ltd

Cherwell Innovation Centre  
77 Heyford Park  
Upper Heyford  
Oxfordshire  
OX25 5HD  
UK

Enquiries:

[info@everestbiotech.com](mailto:info@everestbiotech.com)

Sales:

[sales@everestbiotech.com](mailto:sales@everestbiotech.com)

Tech support:

[support@everestbiotech.com](mailto:support@everestbiotech.com)

Tel: +44 (0)1869 238326

[www.everestbiotech.com](http://www.everestbiotech.com)

**Research Use Only. Not for  
diagnostic or therapeutic use.**

## EB12748 - Goat Anti-dUTPase / DUT Antibody

Size: 100µg specific antibody in 200µl



### Target Protein

**Principal Names:** DUT, deoxyuridine triphosphatase, dUTPase, dUTP nucleotidohydrolase, dUTP pyrophosphatase, deoxyuridine 5'-triphosphate nucleotidohydrolase, mitochondrial

**Official Symbol:** DUT

**Accession Number(s):** NP\_001020419.1; NP\_001939.1; NP\_001020420.1

**Human GeneID(s):** [1854](#)

**Important Comments:** This antibody is expected to recognize all reported isoforms (NP\_001020419.1; NP\_001939.1; NP\_001020420.1).

### Immunogen

Peptide with sequence C-QLRFARLSEHATAPT, from the internal region of the protein sequence according to NP\_001020419.1; NP\_001939.1; NP\_001020420.1.

Please note the [peptide](#) is available for sale.

### Purification and Storage

Purified from goat serum by ammonium sulphate precipitation followed by antigen affinity chromatography using the immunizing peptide.

Supplied at 0.5 mg/ml in Tris saline, 0.02% sodium azide, pH7.3 with 0.5% bovine serum albumin.

Aliquot and store at -20°C. Minimize freezing and thawing.

### Applications Tested

**Peptide ELISA:** antibody detection limit dilution 1:16000.

**Western blot:** Approx 20kDa band observed in lysates of cell lines HEK293 and HeLa (calculated MW of 17.7kDa according to NP\_001939.1). Recommended concentration: 0.1-0.3µg/ml. Primary incubation was 1 hour.

**IHC:** Paraffin embedded Human Testis and Tonsil. Recommended concentration: 5µg/ml.

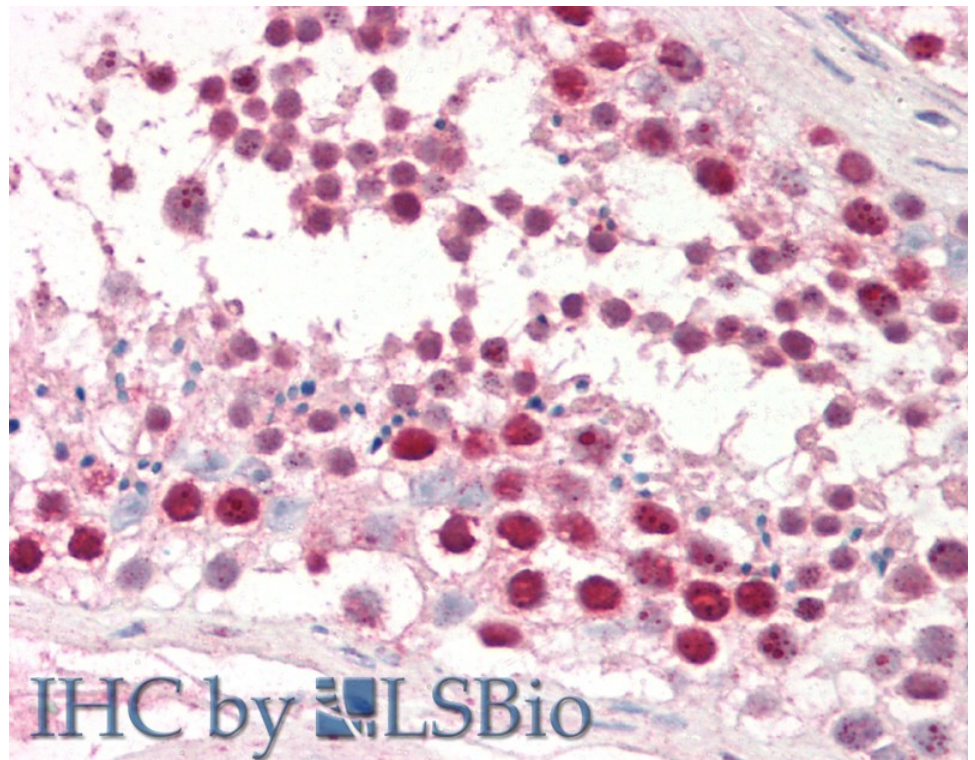
### Species Reactivity

**Tested:** Human

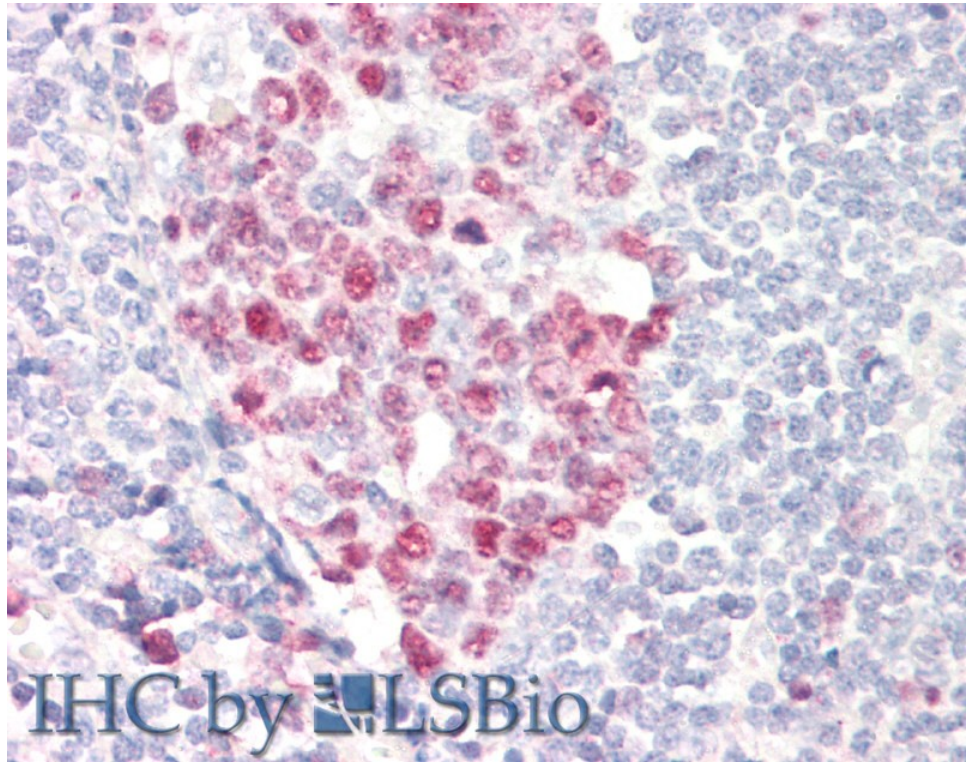
**Expected from sequence similarity:** Human, Pig, Cow



EB12748 (0.1µg/ml) staining of HEK293 (A) and HeLa (B) lysates (35µg protein in RIPA buffer). Detected by chemiluminescence.



EB12748 (5µg/ml) staining of paraffin embedded Human Testis. Steamed antigen retrieval with citrate buffer pH 6, AP-staining.



EB12748 (5µg/ml) staining of paraffin embedded Human Tonsil. Steamed antigen retrieval with citrate buffer pH 6, AP-staining.