

## UK Office

### Everest Biotech Ltd

Cherwell Innovation Centre  
77 Heyford Park  
Upper Heyford  
Oxfordshire  
OX25 5HD  
UK

Enquiries:

[info@everestbiotech.com](mailto:info@everestbiotech.com)

Sales:

[sales@everestbiotech.com](mailto:sales@everestbiotech.com)

Tech support:

[support@everestbiotech.com](mailto:support@everestbiotech.com)

Tel: +44 (0)1869 238326

[www.everestbiotech.com](http://www.everestbiotech.com)

**Research Use Only. Not for  
diagnostic or therapeutic use.**

## EB11465 - Goat Anti-Dvl1 (mouse) Antibody

Size: 100µg specific antibody in 200µl



### Target Protein

**Principal Names:** Dvl1, dishevelled, dsh homolog 1 (Drosophila), RP23-242K15.15-003, Dvl, mKIAA4029, DSH homolog 1, dishevelled-1, segment polarity protein dishevelled homolog DVL-1

**Official Symbol:** Dvl1

**Accession Number(s):** NP\_034221.3; NP\_001343310.1

**Non-Human GeneID(s):** 13542 (mouse), 83721 (rat)

### Immunogen

Peptide with sequence C-PQLEEAPLTVKSD, from the internal region of the protein sequence according to NP\_034221.3; NP\_001343310.1.

Please note the [peptide](#) is available for sale.

### Purification and Storage

Purified from goat serum by ammonium sulphate precipitation followed by antigen affinity chromatography using the immunizing peptide.

Supplied at 0.5 mg/ml in Tris saline, 0.02% sodium azide, pH7.3 with 0.5% bovine serum albumin.

Aliquot and store at -20°C. Minimize freezing and thawing.

### Applications Tested

**Peptide ELISA:** antibody detection limit dilution 1:16000.

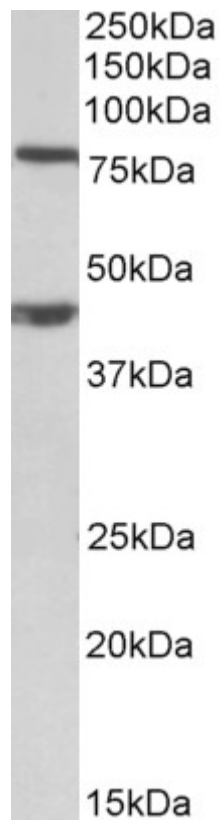
**Western blot:** Approx 80kDa band observed in lysates of cell line NIH3T3 (calculated MW of 75.4kDa according to NP\_034221.3). An additional band of unknown identity was also consistently observed at 45kDa. This band was successfully blocked by incubation with the immunizing peptide. Recommended concentration: 1-3µg/ml. Primary incubation 1 hour at room temperature.

**IHC:** Paraffin embedded Human Brain (Cortex). Recommended concentration: 5µg/ml.

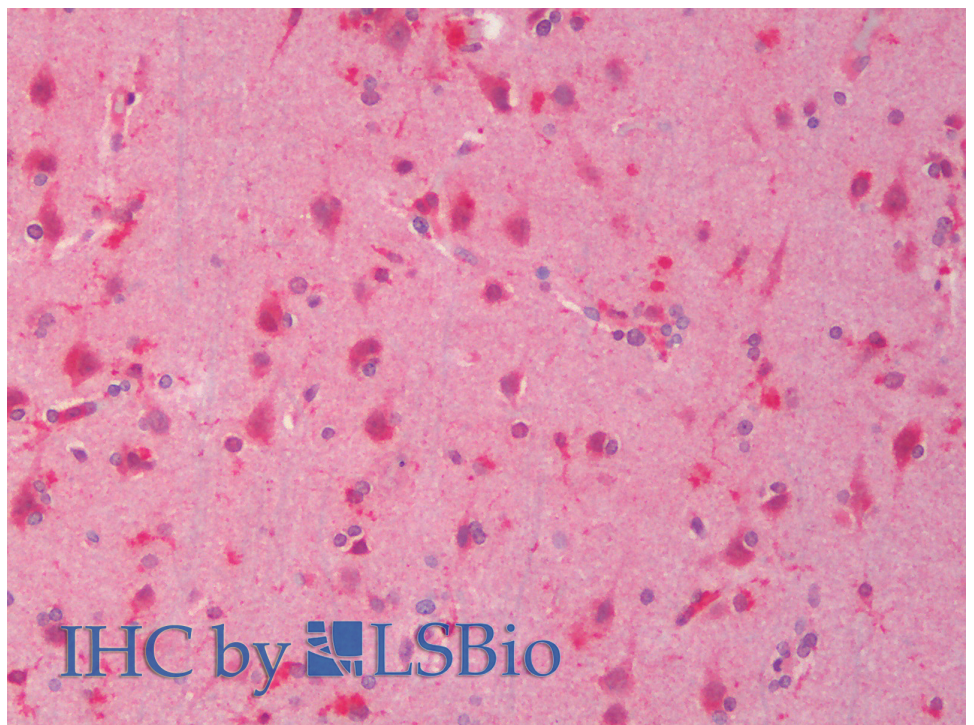
### Species Reactivity

**Tested:** Human, Mouse

**Expected from sequence similarity:** Human, Mouse, Rat, Pig, Cow



EB11465 (1 $\mu$ g/ml) staining of NIH3T3 lysate (35 $\mu$ g protein in RIPA buffer). Detected by chemiluminescence.



EB11465 (5 $\mu$ g/ml) staining of paraffin embedded Human Cortex. Steamed antigen retrieval with citrate buffer pH 6, AP-staining.