



UK Office

Everest Biotech Ltd

Cherwell Innovation Centre
77 Heyford Park
Upper Heyford
Oxfordshire
OX25 5HD
UK

Enquiries:

info@everestbiotech.com

Sales:

sales@everestbiotech.com

Tech support:

support@everestbiotech.com

Tel: +44 (0)1869 238326

Fax: +44 (0)1869 238327

US Office

Everest Biotech c/o Abcore

405 Maple Street, Suite A106
Ramona,
CA 92065
USA

Inquiries:

info@everestbiotech.com

Sales:

usasales@everestbiotech.com

Tech support:

support@everestbiotech.com

Tel: 888-320-4628 (toll-free)

Fax: 888-841-9041

www.everestbiotech.com

**Research Use Only. Not for
diagnostic or therapeutic use.**

EB11465 - Goat Anti-Dvl1 (mouse) Antibody

Size: 100µg specific antibody in 200µl



Target Protein

Principal Names: Dvl1, dishevelled, dsh homolog 1 (Drosophila), RP23-242K15.15-003, Dvl, mKIAA4029, DSH homolog 1, dishevelled-1, segment polarity protein dishevelled homolog DVL-1

Official Symbol: Dvl1

Accession Number(s): NP_034221.3; NP_001343310.1

Non-Human GeneID(s): 13542 (mouse), 83721 (rat)

Immunogen

Peptide with sequence C-PQLEEAPLTVKSD, from the internal region of the protein sequence according to NP_034221.3; NP_001343310.1.

Please note the [peptide](#) is available for sale.

Purification and Storage

Purified from goat serum by ammonium sulphate precipitation followed by antigen affinity chromatography using the immunizing peptide.

Supplied at 0.5 mg/ml in Tris saline, 0.02% sodium azide, pH7.3 with 0.5% bovine serum albumin.

Aliquot and store at -20°C. Minimize freezing and thawing.

Applications Tested

Peptide ELISA: antibody detection limit dilution 1:16000.

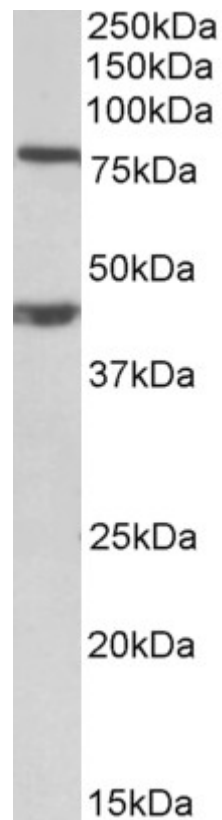
Western blot: Approx 80kDa band observed in lysates of cell line NIH3T3 (calculated MW of 75.4kDa according to NP_034221.3). An additional band of unknown identity was also consistently observed at 45kDa. This band was successfully blocked by incubation with the immunizing peptide. Recommended concentration: 1-3µg/ml. Primary incubation 1 hour at room temperature.

IHC: Paraffin embedded Human Brain (Cortex). Recommended concentration: 5µg/ml.

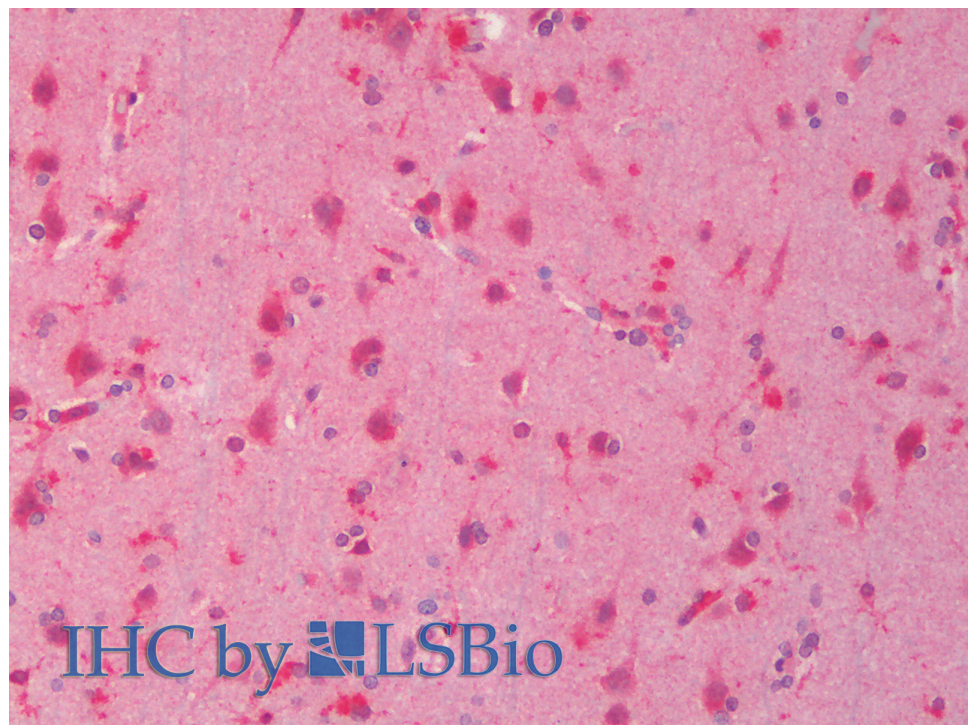
Species Reactivity

Tested: Human, Mouse

Expected from sequence similarity: Human, Mouse, Rat, Pig, Cow



EB11465 (1µg/ml) staining of NIH3T3 lysate (35µg protein in RIPA buffer). Detected by chemiluminescence.



EB11465 (5µg/ml) staining of paraffin embedded Human Cortex. Steamed antigen retrieval with citrate buffer pH 6, AP-staining.