



## UK Office

### Everest Biotech Ltd

Cherwell Innovation Centre  
77 Heyford Park  
Upper Heyford  
Oxfordshire  
OX25 5HD  
UK

Enquiries:

[info@everestbiotech.com](mailto:info@everestbiotech.com)

Sales:

[sales@everestbiotech.com](mailto:sales@everestbiotech.com)

Tech support:

[support@everestbiotech.com](mailto:support@everestbiotech.com)

Tel: +44 (0)1869 238326

Fax: +44 (0)1869 238327

## US Office

### Everest Biotech c/o Abcore

405 Maple Street, Suite A106  
Ramona,  
CA 92065  
USA

Inquiries:

[info@everestbiotech.com](mailto:info@everestbiotech.com)

Sales:

[usasales@everestbiotech.com](mailto:usasales@everestbiotech.com)

Tech support:

[support@everestbiotech.com](mailto:support@everestbiotech.com)

Tel: 888-320-4628 (toll-free)

Fax: 888-841-9041

[www.everestbiotech.com](http://www.everestbiotech.com)

**Research Use Only. Not for  
diagnostic or therapeutic use.**

## EB09819 - Goat Anti-DYDC1 Antibody

Size: 100µg specific antibody in 200µl



### Target Protein

**Principal Names:** bA36D19.5, BC019250 protein, DPY30 domain containing 1, DPY30D1, FLJ43920, OTTHUMP00000019963, DYDC1

**Official Symbol:** DYDC1

**Accession Number(s):** NP\_620167.1

**Human GeneID(s):** [143241](#)

### Immunogen

Peptide with sequence C-RNEDILHSEEATLD, from the internal region of the protein sequence according to NP\_620167.1.

Please note the [peptide](#) is available for sale.

### Purification and Storage

Purified from goat serum by ammonium sulphate precipitation followed by antigen affinity chromatography using the immunizing peptide.

Supplied at 0.5 mg/ml in Tris saline, 0.02% sodium azide, pH7.3 with 0.5% bovine serum albumin.

Aliquot and store at -20°C. Minimize freezing and thawing.

### Applications Tested

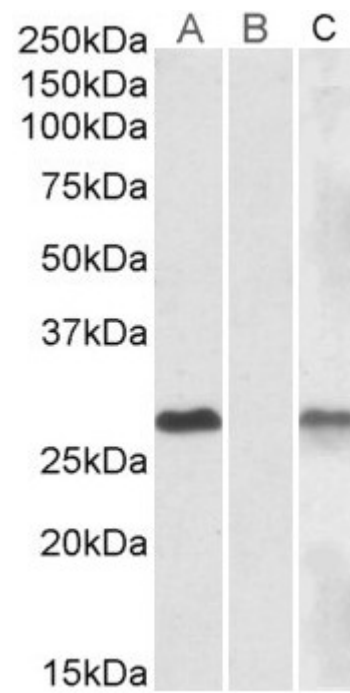
**Peptide ELISA:** antibody detection limit dilution 1:16000.

**Western blot:** In transfected HEK293 transiently expressing Human DYDC1 (myc and DYKDDDDK tagged), a band of approx. 28kDa is observed. No bands are observed in mock-transfected HEK293 and the same band is observed using anti-myc antibody. Recommended concentration, 0.5-1µg/ml.

### Species Reactivity

**Tested:** Human

**Expected from sequence similarity:** Human



Lane A - EB09819 (1µg/ml) staining of HEK293 overexpressing Human DYDC1 lysate (10µg protein in RIPA buffer) Lane B - EB09819 (1µg/ml) staining of HEK293 mock-transfected lysate (10µg protein in RIPA buffer). Lane C - EB00106 anti-MYC Tag (1/1000) staining HEK293 overexpressing Human DYDC1 lysate (10µg protein in RIPA buffer). Primary incubations were for 1 hour. Detected by chemiluminescence.