



UK Office

Everest Biotech Ltd

Cherwell Innovation Centre
77 Heyford Park
Upper Heyford
Oxfordshire
OX25 5HD
UK

Enquiries:

info@everestbiotech.com

Sales:

sales@everestbiotech.com

Tech support:

support@everestbiotech.com

Tel: +44 (0)1869 238326

Fax: +44 (0)1869 238327

US Office

Everest Biotech c/o Abcore

405 Maple Street, Suite A106
Ramona,
CA 92065
USA

Inquiries:

info@everestbiotech.com

Sales:

usasales@everestbiotech.com

Tech support:

support@everestbiotech.com

Tel: 888-320-4628 (toll-free)

Fax: 888-841-9041

www.everestbiotech.com

**Research Use Only. Not for
diagnostic or therapeutic use.**

EB06656 - Goat Anti-DYX1C1 (Isoform a) Antibody

Size: 100µg specific antibody in 200µl



Target Protein

Principal Names: DYX1C1, DYX1, EKN1, DYXC1, FLJ37882, dyslexia susceptibility 1 candidate 1, MGC70618, RD

Official Symbol: DNAAF4

Accession Number(s): NP_570722.2

Human GeneID(s): [161582](#)

Non-Human GeneID(s): 67685 (mouse)

Important Comments: This antibody is expected to recognise only one of the three reported isoforms (NP_570722.2, isoform a).

Immunogen

Peptide with sequence C-KIRNVIQGTELKS, from the C Terminus of the protein sequence according to NP_570722.2.

Please note the [peptide](#) is available for sale.

Purification and Storage

Purified from goat serum by ammonium sulphate precipitation followed by antigen affinity chromatography using the immunizing peptide.

Supplied at 0.5 mg/ml in Tris saline, 0.02% sodium azide, pH7.3 with 0.5% bovine serum albumin.

Aliquot and store at -20°C. Minimize freezing and thawing.

Applications Tested

Peptide ELISA: antibody detection limit dilution 1:16000.

Western blot: Lysates of COS1 transfected with full length recombinant Human DYX1C1 gave bands at approx 48kDa after 0.1µg/ml antibody staining. In addition, a minor band of 24kDa is detected consistent with observations with N-terminal specific antibodies (unpublished data, LoTurco, Connecticut, USA). The 75kDa band is visible in the non-transfected COS1 also (first lane) and is therefore non-specific. We call for caution when this product is used in other assays than Western blot. Data kindly provided by Wang and LoTurco, University of Connecticut, USA.

IHC: In paraffin embedded Human Cerebral Cortex shows cytoplasm staining in some of the neuronal cells. Recommended concentration, 5-10µg/ml.

Species Reactivity

Tested: Human

Expected from sequence similarity: Human, Mouse, Rat

Specific Reference

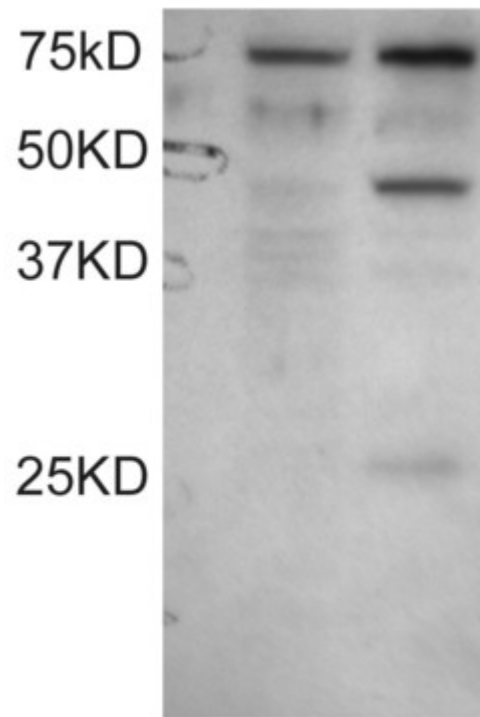
This antibody has been successfully used (in WB on Rat Brain (24kDa and 48kDa)) in the following paper:

Wang Y, Paramasivam M, Thomas A, Bai J, Kaminen-Ahola N, Kere J, Voskuil J, Rosen GD, Galaburda AM, Loturco JJ.

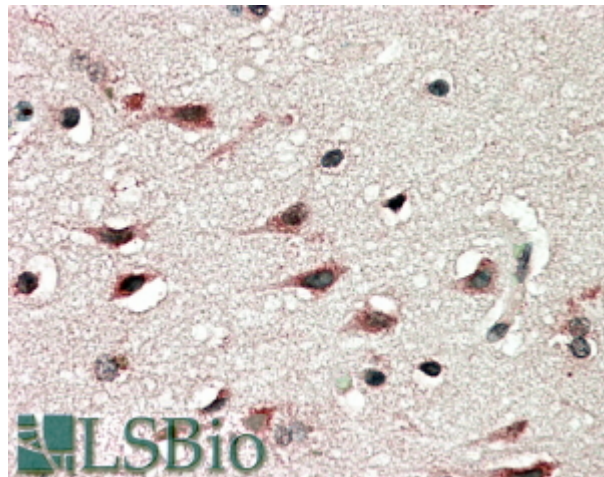
DYX1C1 functions in neuronal migration in developing neocortex.

Neuroscience. 2006 Dec 1;143(2):515-522. Epub 2006 Sep 20.

PMID: 16989952



EB06656 staining (0.1 μ g/ml) of COS1 cell lysates: untransfected (left lane) and transfected with full length recombinant Human DYX1C1 (right lane). Data kindly provided by Wang and LoTurco, University of Connecticut, USA.



EB06656 (5 μ g/ml) staining of paraffin embedded Human Cerebral Cortex. Steamed antigen retrieval with citrate buffer pH 6, AP-staining.