



## UK Office

### Everest Biotech Ltd

Cherwell Innovation Centre  
77 Heyford Park  
Upper Heyford  
Oxfordshire  
OX25 5HD  
UK

Enquiries:

[info@everestbiotech.com](mailto:info@everestbiotech.com)

Sales:

[sales@everestbiotech.com](mailto:sales@everestbiotech.com)

Tech support:

[support@everestbiotech.com](mailto:support@everestbiotech.com)

Tel: +44 (0)1869 238326

[www.everestbiotech.com](http://www.everestbiotech.com)

**Research Use Only. Not for  
diagnostic or therapeutic use.**

## EB09935 - Goat Anti-E2F3 (mouse) Antibody

Size: 100µg specific antibody in 200µl



### Target Protein

**Principal Names:** E2F transcription factor 3, E2f3a, E2F3b, mKIAA0075, OTTMUSP00000000663, E2f3

**Official Symbol:** E2f3

**Accession Number(s):** NP\_034223.1

**Human GeneID(s):** [1871](#)

**Non-Human GeneID(s):** 13557 (mouse)

### Immunogen

Peptide with sequence DLEKLPLVEDFMCS, from the C Terminus of the protein sequence according to NP\_034223.1.

Please note the [peptide](#) is available for sale.

### Purification and Storage

Purified from goat serum by ammonium sulphate precipitation followed by antigen affinity chromatography using the immunizing peptide.

Supplied at 0.5 mg/ml in Tris saline, 0.02% sodium azide, pH7.3 with 0.5% bovine serum albumin.

Aliquot and store at -20°C. Minimize freezing and thawing.

### Applications Tested

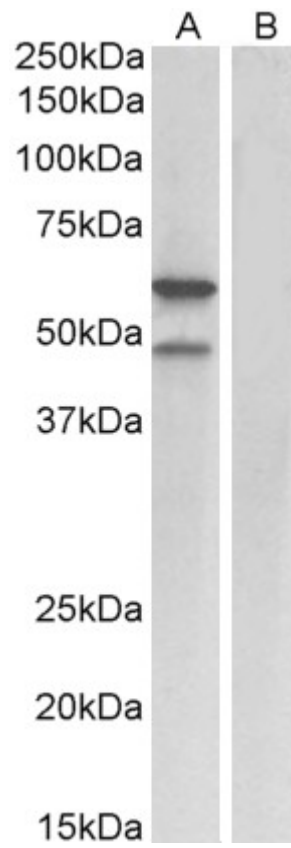
**Peptide ELISA:** antibody detection limit dilution 1:8000.

**Western blot:** Approx 60kDa and 48kDa band observed in Mouse fetal Lung lysates (calculated MW of 48.8kDa according to NP\_034223.1). The 60kDa band was also observed in nuclear lysates of cell line NIH3T3 and it corresponds with different antibodies from other sources. Recommended concentration: 1-3µg/ml.

### Species Reactivity

**Tested:** Mouse

**Expected from sequence similarity:** Mouse, Human



EB09935 (1 $\mu$ g/ml) staining of Mouse fetal Lung lysate (35 $\mu$ g protein in RIPA buffer) with (B) and without (A) blocking with the immunizing peptide. Primary incubation was 1 hour. Detected by chemiluminescence.