



UK Office

Everest Biotech Ltd

Cherwell Innovation Centre
77 Heyford Park
Upper Heyford
Oxfordshire
OX25 5HD
UK

Enquiries:

info@everestbiotech.com

Sales:

sales@everestbiotech.com

Tech support:

support@everestbiotech.com

Tel: +44 (0)1869 238326

Fax: +44 (0)1869 238327

US Office

Everest Biotech c/o Abcore

405 Maple Street, Suite A106
Ramona,
CA 92065
USA

Inquiries:

info@everestbiotech.com

Sales:

usasales@everestbiotech.com

Tech support:

support@everestbiotech.com

Tel: 888-320-4628 (toll-free)

Fax: 888-841-9041

www.everestbiotech.com

**Research Use Only. Not for
diagnostic or therapeutic use.**

EB09937 - Goat Anti-E2F4 Antibody

Size: 100µg specific antibody in 200µl



Target Protein

Principal Names: E2F transcription factor 4, E2F transcription factor 4, p107/p130-binding, E2F-4, p107/p130-binding protein, E2F4

Official Symbol: E2F4

Accession Number(s): NP_001941.2

Human GeneID(s): [1874](#)

Non-Human GeneID(s): 104394 (mouse)

Immunogen

Peptide with sequence C-DPTGVLELPKELSE, from the internal region of the protein sequence according to NP_001941.2.

Please note the [peptide](#) is available for sale.

Purification and Storage

Purified from goat serum by ammonium sulphate precipitation followed by antigen affinity chromatography using the immunizing peptide.

Supplied at 0.5 mg/ml in Tris saline, 0.02% sodium azide, pH7.3 with 0.5% bovine serum albumin.

Aliquot and store at -20°C. Minimize freezing and thawing.

Applications Tested

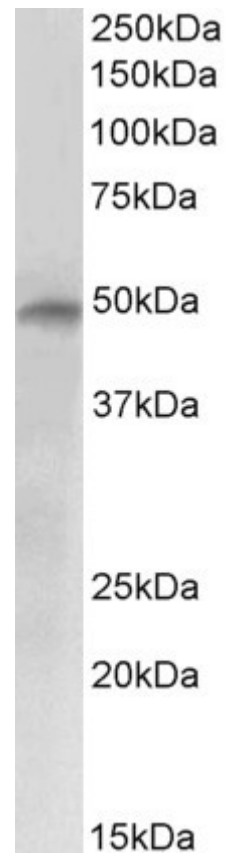
Peptide ELISA: antibody detection limit dilution 1:4000.

Western blot: Approx 48kDa band observed in Human Brain (Cerebellum) lysates (calculated MW of 44.0kDa according to NP_001941.2). Recommended concentration: 1-3µg/ml.

Species Reactivity

Tested: Human

Expected from sequence similarity: Human, Mouse, Dog, Cow



EB09937 (2µg/ml) staining of Human Brain (Cerebellum) lysate (35µg protein in RIPA buffer) . Primary incubation was 1 hour. Detected by chemiluminescence.