



UK Office

Everest Biotech Ltd

Cherwell Innovation Centre
77 Heyford Park
Upper Heyford
Oxfordshire
OX25 5HD
UK

Enquiries:

info@everestbiotech.com

Sales:

sales@everestbiotech.com

Tech support:

support@everestbiotech.com

Tel: +44 (0)1869 238326

Fax: +44 (0)1869 238327

US Office

Everest Biotech c/o Abcore

405 Maple Street, Suite A106
Ramona,
CA 92065
USA

Inquiries:

info@everestbiotech.com

Sales:

usasales@everestbiotech.com

Tech support:

support@everestbiotech.com

Tel: 888-320-4628 (toll-free)

Fax: 888-841-9041

www.everestbiotech.com

**Research Use Only. Not for
diagnostic or therapeutic use.**

EB11916 - Goat Anti-EAAT1 / GLAST1 Antibody

Size: 100µg specific antibody in 200µl



Target Protein

Principal Names: SLC1A3, solute carrier family 1 (glial high affinity glutamate transporter), member 3, EA6, EAAT1, FLJ25094, GLAST, GLAST1, GLAST-1, OTTHUMP00000116002, excitatory amino acid transporter 1, sodium-dependent glutamate/aspartate transporter 1, solute carrier family 1 member 3

Official Symbol: SLC1A3

Accession Number(s): NP_004163.3; NP_001160167.1

Human GeneID(s): [6507](#)

Important Comments: This antibody is expected to recognize isoform 1 (NP_004163.3) and isoform 2 (NP_001160167.1).

Immunogen

Peptide with sequence C-DNETEKPIDSETK, from the C Terminus of the protein sequence according to NP_004163.3; NP_001160167.1.

Please note the [peptide](#) is available for sale.

Purification and Storage

Purified from goat serum by ammonium sulphate precipitation followed by antigen affinity chromatography using the immunizing peptide.

Supplied at 0.5 mg/ml in Tris saline, 0.02% sodium azide, pH7.3 with 0.5% bovine serum albumin.

Aliquot and store at -20°C. Minimize freezing and thawing.

Applications Tested

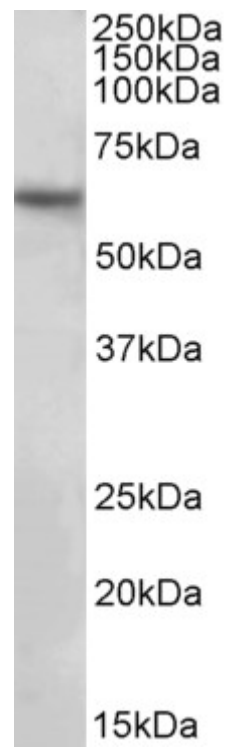
Peptide ELISA: antibody detection limit dilution 1:8000.

Western blot: Approx 60kDa band observed in Human Brain (Hippocampus) lysates (calculated MW of 59.6kDa according to NP_004163.3). Recommended concentration: 1-3µg/ml.

Species Reactivity

Tested: Human

Expected from sequence similarity: Human



EB11916 (2 μ g/ml) staining of Human Hippocampus lysate (35 μ g protein in RIPA buffer). Primary incubation was 1 hour. Detected by chemiluminescence.