



UK Office

Everest Biotech Ltd

Cherwell Innovation Centre
77 Heyford Park
Upper Heyford
Oxfordshire
OX25 5HD
UK

Enquiries:

info@everestbiotech.com

Sales:

sales@everestbiotech.com

Tech support:

support@everestbiotech.com

Tel: +44 (0)1869 238326

Fax: +44 (0)1869 238327

US Office

Everest Biotech c/o Abcore

405 Maple Street, Suite A106
Ramona,
CA 92065
USA

Inquiries:

info@everestbiotech.com

Sales:

usasales@everestbiotech.com

Tech support:

support@everestbiotech.com

Tel: 888-320-4628 (toll-free)

Fax: 888-841-9041

www.everestbiotech.com

**Research Use Only. Not for
diagnostic or therapeutic use.**

EB07809 - Goat Anti-EBF1 / COE1 Antibody

Size: 100µg specific antibody in 200µl



Target Protein

Principal Names: EBF1, early B-cell factor 1, COE1, EBF, O/E-1, OLF1, Collier, Olf and EBF transcription factor 1, early B-cell factor olfactory neuronal transcription factor 1

Official Symbol: EBF1

Accession Number(s): NP_076870.1

Human GeneID(s): [1879](#)

Non-Human GeneID(s): 13591 (mouse), 116543 (rat)

Important Comments: This antibody is expected not to cross-react with EBF2, EBF3 and EBF4.

Immunogen

Peptide with sequence C-HNQLPALANTSV, from the internal region of the protein sequence according to NP_076870.1.

Please note the [peptide](#) is available for sale.

Purification and Storage

Purified from goat serum by ammonium sulphate precipitation followed by antigen affinity chromatography using the immunizing peptide.

Supplied at 0.5 mg/ml in Tris saline, 0.02% sodium azide, pH7.3 with 0.5% bovine serum albumin.

Aliquot and store at -20°C. Minimize freezing and thawing.

Applications Tested

Peptide ELISA: antibody detection limit dilution 1:64000.

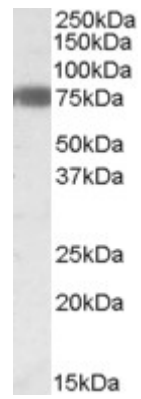
Western blot: Approx. 75kDa band observed in Human Adipose lysates (calculated MW of 64.5kDa according to NP_076870.1). Recommended concentration: 0.3-0.1µg/ml.

Immunoprecipitation: Anonymous customer used this product successfully in IP from induced 3T3-L1 expressing FLAG-EBF1.

Species Reactivity

Tested: Human, Mouse

Expected from sequence similarity: Human, Mouse, Rat



EB07809 (0.3 μ g/ml) staining of Human Adipose lysate (35 μ g protein in RIPA buffer). Primary incubation was 1 hour. Detected by chemiluminescence.