



UK Office

Everest Biotech Ltd

Cherwell Innovation Centre
77 Heyford Park
Upper Heyford
Oxfordshire
OX25 5HD
UK

Enquiries:

info@everestbiotech.com

Sales:

sales@everestbiotech.com

Tech support:

support@everestbiotech.com

Tel: +44 (0)1869 238326

Fax: +44 (0)1869 238327

US Office

Everest Biotech c/o Abcore

405 Maple Street, Suite A106
Ramona,
CA 92065
USA

Inquiries:

info@everestbiotech.com

Sales:

usasales@everestbiotech.com

Tech support:

support@everestbiotech.com

Tel: 888-320-4628 (toll-free)

Fax: 888-841-9041

www.everestbiotech.com

**Research Use Only. Not for
diagnostic or therapeutic use.**

EB11689 - Goat Anti-EEA1 (aa821-835) Antibody

Size: 100µg specific antibody in 200µl



Target Protein

Principal Names: early endosome antigen 1, early endosome antigen 1, 162kD, early endosome-associated protein, EEA1, endosome-associated protein p162, MST105, MSTP105, ZFYVE2, zinc finger FYVE domain-containing protein 2

Official Symbol: EEA1

Accession Number(s): NP_003557.2

Human GeneID(s): [8411](#)

Immunogen

Peptide with sequence C-QETKIQHEELNNRIQ, from the internal region of the protein sequence according to NP_003557.2.

Please note the [peptide](#) is available for sale.

Purification and Storage

Purified from goat serum by ammonium sulphate precipitation followed by antigen affinity chromatography using the immunizing peptide.

Supplied at 0.5 mg/ml in Tris saline, 0.02% sodium azide, pH7.3 with 0.5% bovine serum albumin.

Aliquot and store at -20°C. Minimize freezing and thawing.

Applications Tested

Peptide ELISA: antibody detection limit dilution 1:128000.

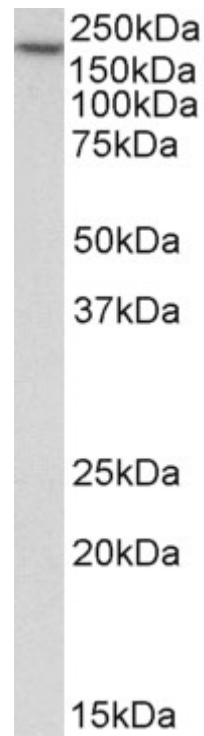
Western blot: Approx 200kDa band observed in lysates of cell line HEK293 (calculated MW of 162kDa according to NP_003557.2). This molecular weight is routinely observed by other sources. Recommended concentration: 0.3-1µg/ml. Primary incubation 1 hour at room temperature.

Immunofluorescence: Strong expression of the protein seen in the vesicles/cytoplasm of NIH3T3 cells. Recommended concentration: 5µg/ml.

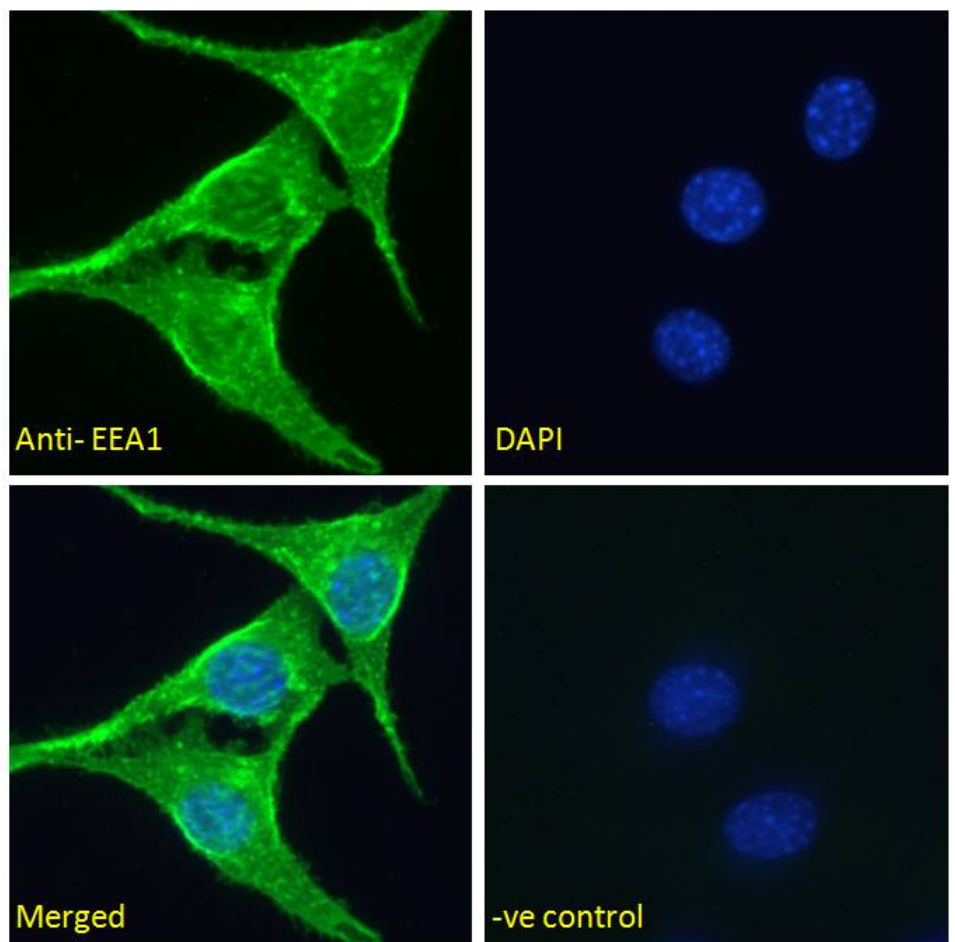
Species Reactivity

Tested: Human, Mouse

Expected from sequence similarity: Human



EB11689 (0.3 μ g/ml) staining of HEK293 lysate (35 μ g protein in RIPA buffer). Detected by chemiluminescence.



EB11689 Immunofluorescence analysis of paraformaldehyde fixed NIH3T3 cells, permeabilized with 0.15% Triton. Primary incubation 1hr (5 μ g/ml) followed by Alexa Fluor 488 secondary antibody (2 μ g/ml), showing vesicle/cytoplasmic staining. The nuclear stain is DAPI (blue). Negative control: Unimmunized goat IgG (5 μ g/ml) followed by Alexa Fluor 488 secondary antibody (2 μ g/ml).