

UK Office

Everest Biotech Ltd

Cherwell Innovation Centre
77 Heyford Park
Upper Heyford
Oxfordshire
OX25 5HD
UK

Enquiries:

info@everestbiotech.com

Sales:

sales@everestbiotech.com

Tech support:

support@everestbiotech.com

Tel: +44 (0)1869 238326

www.everestbiotech.com

**Research Use Only. Not for
diagnostic or therapeutic use.**

EB12188 - Goat Anti-EEF1E1 / AIMP3 / p18 Antibody

Size: 100µg specific antibody in 200µl



Target Protein

Principal Names: EEF1E1, eukaryotic translation elongation factor 1 epsilon 1, AIMP3, P18, ARS-interacting multifunctional protein 3, aminoacyl tRNA synthetase complex-interacting multifunctional protein 3, eukaryotic translation elongation factor 1 epsilon-1,

Official Symbol: EEF1E1

Accession Number(s): NP_004271.1; NP_001129122.1

Human GeneID(s): [9521](#)

Important Comments: This antibody is expected to recognize both reported isoforms (NP_004271.1; NP_001129122.1).

Immunogen

Peptide with sequence C-SKGNKYSAQGERQ, from the internal region (near N Terminus) of the protein sequence according to NP_004271.1; NP_001129122.1.

Please note the [peptide](#) is available for sale.

Purification and Storage

Purified from goat serum by ammonium sulphate precipitation followed by antigen affinity chromatography using the immunizing peptide.

Supplied at 0.5 mg/ml in Tris saline, 0.02% sodium azide, pH7.3 with 0.5% bovine serum albumin.

Aliquot and store at -20°C. Minimize freezing and thawing.

Applications Tested

Peptide ELISA: antibody detection limit dilution 1:128000.

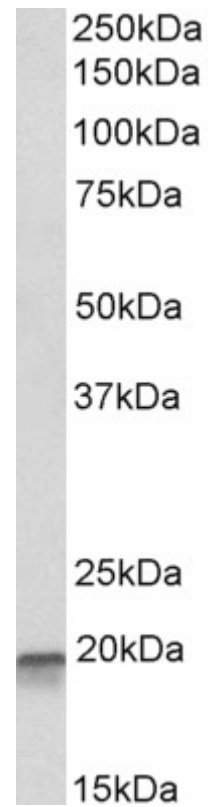
Western blot: Approx 19kDa band observed in lysates of cell lines HepG2 and K562 (calculated MW of 19.8kDa according to NP_004271.1) and in Pig Testis lysates (calculated MW of 19.8kDa according to NP_001230474.1). Recommended concentration: 0.1-0.3µg/ml. Primary incubation was 1 hour.

IHC: Paraffin embedded Human Pancreas. Recommended concentration: 5µg/ml.

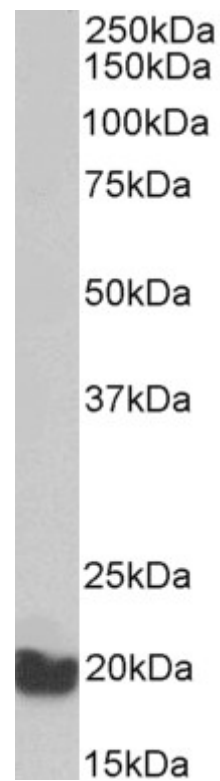
Species Reactivity

Tested: Human, Pig

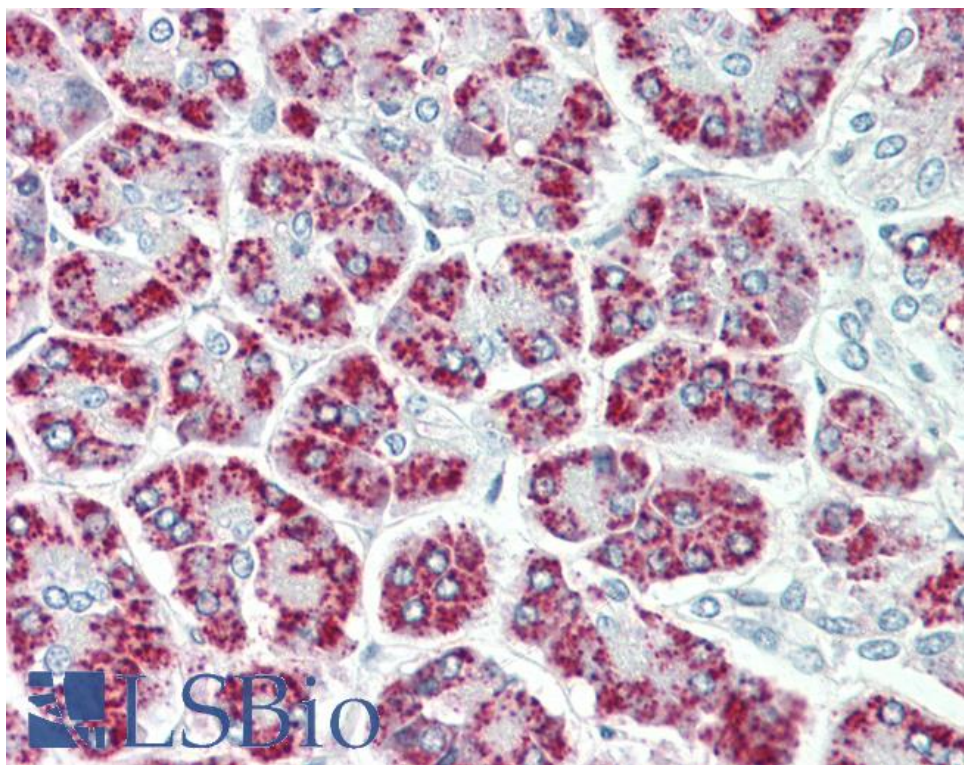
Expected from sequence similarity: Human, Dog, Pig, Cow



EB12188 (0.1 μ g/ml) staining of K562 lysate (35 μ g protein in RIPA buffer). Detected by chemiluminescence.



EB12188 (0.3 μ g/ml) staining of Pig Testis lysate (35 μ g protein in RIPA buffer). Detected by chemiluminescence.



EB12188 (5µg/ml) staining of paraffin embedded Human Pancreas. Steamed antigen retrieval with citrate buffer pH 6, AP-staining.