

UK Office

Everest Biotech Ltd

Cherwell Innovation Centre
77 Heyford Park
Upper Heyford
Oxfordshire
OX25 5HD
UK

Enquiries:

info@everestbiotech.com

Sales:

sales@everestbiotech.com

Tech support:

support@everestbiotech.com

Tel: +44 (0)1869 238326

www.everestbiotech.com

**Research Use Only. Not for
diagnostic or therapeutic use.**

EB10439 - Goat Anti-EFNA1 Antibody

Size: 100µg specific antibody in 200µl



Target Protein

Principal Names: B61, ECKLG, EFL1, eph-related receptor tyrosine kinase ligand 1, ephrin A1, ephrin-A1, EPLG1, immediate early response protein B61, LERK1, ligand of eph-related kinase 1, TNFAIP4, tumor necrosis factor, alpha-induced protein 4, EFNA1

Official Symbol: EFNA1

Accession Number(s): NP_004419.2

Human GeneID(s): [1942](#)

Non-Human GeneID(s): 13636 (mouse), 94268 (rat)

Important Comments: This antibody is expected to recognize isoform a (NP_004419.2) only.

Immunogen

Peptide with sequence C-KVTVSGKITHSP, from the internal region of the protein sequence according to NP_004419.2.

Please note the [peptide](#) is available for sale.

Purification and Storage

Purified from goat serum by ammonium sulphate precipitation followed by antigen affinity chromatography using the immunizing peptide.

Supplied at 0.5 mg/ml in Tris saline, 0.02% sodium azide, pH7.3 with 0.5% bovine serum albumin.

Aliquot and store at -20°C. Minimize freezing and thawing.

Applications Tested

Peptide ELISA: antibody detection limit dilution 1:16000.

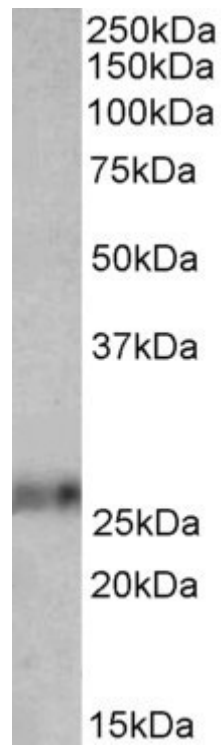
Western blot: Approx 26kDa band observed in Mouse Thymus and Rat Lung lysates (calculated MW of 23.8kDa according to Mouse NP_034237.3 and Rat NP_446051.2).

Recommended concentration: 0.01-0.03µg/ml.

Species Reactivity

Tested: Mouse, Rat

Expected from sequence similarity: Human, Mouse, Rat, Dog, Pig



EB10439 (0.01 μ g/ml) staining of Mouse Thymus lysate (35 μ g protein in RIPA buffer). Primary incubation was 1 hour. Detected by chemiluminescence.