



UK Office

Everest Biotech Ltd

Cherwell Innovation Centre
77 Heyford Park
Upper Heyford
Oxfordshire
OX25 5HD
UK

Enquiries:

info@everestbiotech.com

Sales:

sales@everestbiotech.com

Tech support:

support@everestbiotech.com

Tel: +44 (0)1869 238326

Fax: +44 (0)1869 238327

US Office

Everest Biotech c/o Abcore

405 Maple Street, Suite A106
Ramona,
CA 92065
USA

Inquiries:

info@everestbiotech.com

Sales:

usasales@everestbiotech.com

Tech support:

support@everestbiotech.com

Tel: 888-320-4628 (toll-free)

Fax: 888-841-9041

www.everestbiotech.com

**Research Use Only. Not for
diagnostic or therapeutic use.**

EB05528 - Goat Anti-ELF1 Antibody

Size: 100µg specific antibody in 200µl



Target Protein

Principal Names: ELF1, E74-like factor 1 (ets domain transcription factor), OTTHUMP00000018310, ets-related transcription factor Elf-1

Official Symbol: ELF1

Accession Number(s): NP_758961.1; NP_001138825.1

Human GeneID(s): [1997](#)

Non-Human GeneID(s): 13709 (mouse)

Important Comments: This antibody is expected to recognise both reported isoforms.

Immunogen

Peptide with sequence C-AMKQNELLEPNSE, from the C Terminus of the protein sequence according to NP_758961.1; NP_001138825.1.

Please note the [peptide](#) is available for sale.

Purification and Storage

Purified from goat serum by ammonium sulphate precipitation followed by antigen affinity chromatography using the immunizing peptide.

Supplied at 0.5 mg/ml in Tris saline, 0.02% sodium azide, pH7.3 with 0.5% bovine serum albumin.

Aliquot and store at -20°C. Minimize freezing and thawing.

Applications Tested

Peptide ELISA: antibody detection limit dilution 1:64000.

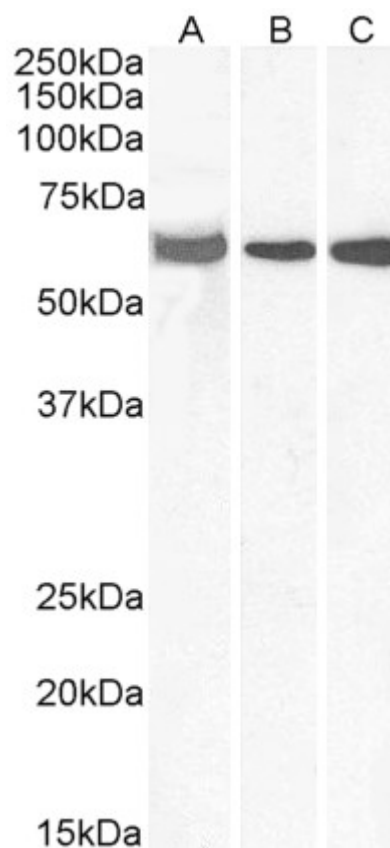
Western blot: Approx 65kDa band observed in Human Lymph Node and Tonsil and in Mouse Thymus lysates (calculated MW of 64.9kDa according to Human NP_001138825.1 and 62.3kDa according to Mouse NP_001273341.1). Recommended concentration: 0.1-0.3µg/ml. Approx 70kDa band observed in lysates of cell line Jurkat (calculated MW of 67.5kDa according to NP_758961.1). Recommended concentration: 0.03-0.1µg/ml.

IHC: Paraffin embedded Human Thymus. Recommended concentration: 2.5µg/ml.

Species Reactivity

Tested: Human, Mouse

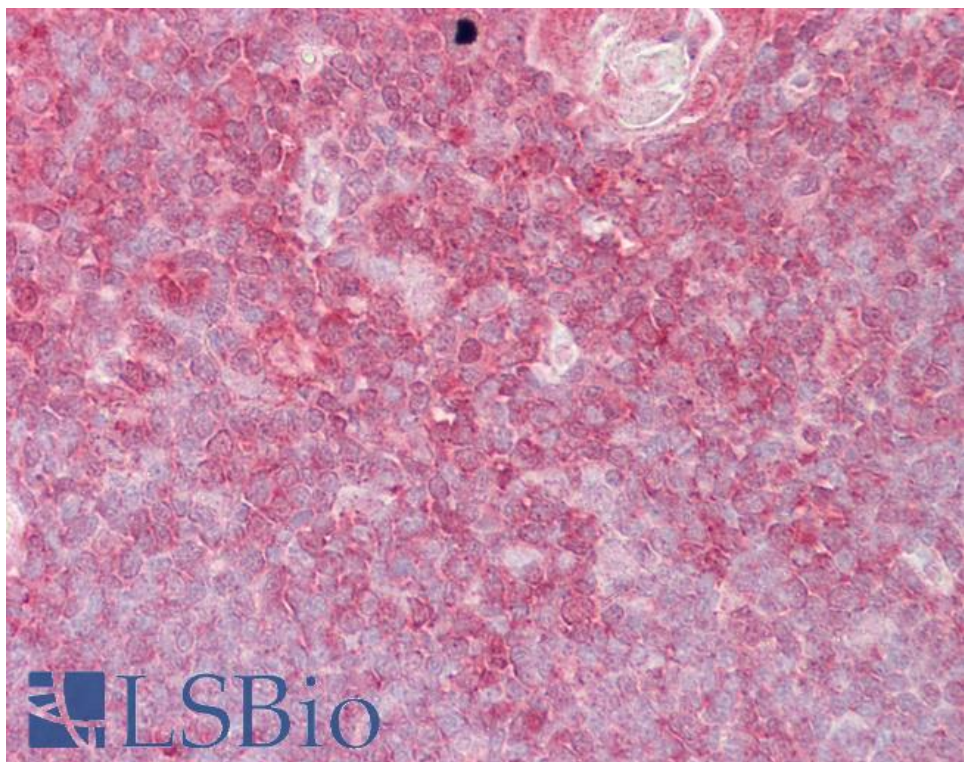
Expected from sequence similarity: Human, Mouse



EB05528 (0.3µg/ml) staining of Human Lymph Node (A), Human Tonsil (B) and Mouse Thymus (C) lysates (35µg protein in RIPA buffer). Primary incubation was 1 hour. Detected by chemiluminescence.



EB05528 (0.1µg/ml) staining of Jurkat cell lysate (35µg protein in RIPA buffer). Primary incubation was 1 hour. Detected by chemiluminescence.



EB05528 (2.5µg/ml) staining of paraffin embedded Human Thymus. Steamed antigen retrieval with citrate buffer pH 6, AP-staining.