



## UK Office

### Everest Biotech Ltd

Cherwell Innovation Centre  
77 Heyford Park  
Upper Heyford  
Oxfordshire  
OX25 5HD  
UK

Enquiries:

[info@everestbiotech.com](mailto:info@everestbiotech.com)

Sales:

[sales@everestbiotech.com](mailto:sales@everestbiotech.com)

Tech support:

[support@everestbiotech.com](mailto:support@everestbiotech.com)

Tel: +44 (0)1869 238326

Fax: +44 (0)1869 238327

## US Office

### Everest Biotech c/o Abcore

405 Maple Street, Suite A106  
Ramona,  
CA 92065  
USA

Inquiries:

[info@everestbiotech.com](mailto:info@everestbiotech.com)

Sales:

[usasales@everestbiotech.com](mailto:usasales@everestbiotech.com)

Tech support:

[support@everestbiotech.com](mailto:support@everestbiotech.com)

Tel: 888-320-4628 (toll-free)

Fax: 888-841-9041

[www.everestbiotech.com](http://www.everestbiotech.com)

**Research Use Only. Not for  
diagnostic or therapeutic use.**

## EB05503 - Goat Anti-ELF3 / ERT/ ESX Antibody

Size: 100µg specific antibody in 200µl



## Target Protein

**Principal Names:** ELF3, ERT, E74-like factor 3 (ets domain transcription factor, epithelial-specific), EPR-1, ESE-1, E74-like factor 3 (ets domain transcription factor), ets domain transcription factor, serine box (epithelial-specific), E74-like factor 3 (ETS domain transcription factor, serine box, epithelial-specific)

**Official Symbol:** ELF3

**Accession Number(s):** NP\_004424.2

**Human GeneID(s):** [1999](#)

## Immunogen

Peptide with sequence C-SGWKEEEVLQSRN, from the C Terminus of the protein sequence according to NP\_004424.2.

Please note the [peptide](#) is available for sale.

## Purification and Storage

Purified from goat serum by ammonium sulphate precipitation followed by antigen affinity chromatography using the immunizing peptide.

Supplied at 0.5 mg/ml in Tris saline, 0.02% sodium azide, pH7.3 with 0.5% bovine serum albumin.

Aliquot and store at -20°C. Minimize freezing and thawing.

## Applications Tested

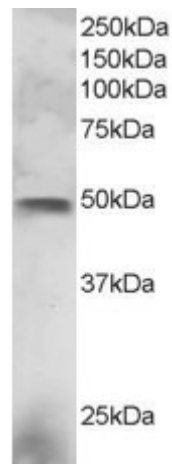
**Peptide ELISA:** antibody detection limit dilution 1:32000.

**Western blot:** Approx 48 kDa band observed in NCI-H460 lysate (calculated MW of 41.5kDa according to NP\_004424.2). In transfected HEK293 transiently expressing ELF3 a band of approx. 40kDa is observed. This band is not observed in the non-transfected HEK293. Recommended for use at 2-4µg/ml.

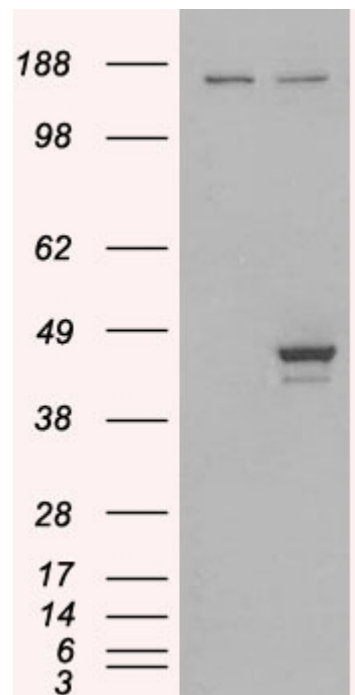
## Species Reactivity

**Tested:** Human

**Expected from sequence similarity:** Human



EB05503 staining (3µg/ml) of NCI-H460 lysate (RIPA buffer, 30µg total protein per lane). Primary incubated for 1 hour. Detected by western blot using chemiluminescence.



HEK293 overexpressing ELF3 (RC200631) and probed with EB05503 (mock transfection in first lane), tested by Origene.