



UK Office

Everest Biotech Ltd

Cherwell Innovation Centre
77 Heyford Park
Upper Heyford
Oxfordshire
OX25 5HD
UK

Enquiries:

info@everestbiotech.com

Sales:

sales@everestbiotech.com

Tech support:

support@everestbiotech.com

Tel: +44 (0)1869 238326

Fax: +44 (0)1869 238327

US Office

Everest Biotech c/o Abcore

405 Maple Street, Suite A106
Ramona,
CA 92065
USA

Inquiries:

info@everestbiotech.com

Sales:

usasales@everestbiotech.com

Tech support:

support@everestbiotech.com

Tel: 888-320-4628 (toll-free)

Fax: 888-841-9041

www.everestbiotech.com

**Research Use Only. Not for
diagnostic or therapeutic use.**

EB05511 - Goat Anti-ELF5 Antibody

Size: 100µg specific antibody in 200µl



Target Protein

Principal Names: ELF5, E74-like factor 5 (ets domain transcription factor), ESE2, ESE-2, E74-like factor 5, epithelium-specific Ets transcription factor 2

Official Symbol: ELF5

Accession Number(s): NP_938195.1; NP_001413.1, NP_001230009.1, NP_001230010.1

Human GeneID(s): [2001](#)

Non-Human GeneID(s): 13711 (mouse)

Important Comments: This antibody is expected to recognise reported Human isoforms represented by NP_938195.1, NP_001413.1, NP_001230009.1 and NP_001230010.1

Immunogen

Peptide with sequence C-GKNAHWQEDKL, from the C Terminus of the protein sequence according to NP_938195.1; NP_001413.1, NP_001230009.1, NP_001230010.1.

Please note the [peptide](#) is available for sale.

Purification and Storage

Purified from goat serum by ammonium sulphate precipitation followed by antigen affinity chromatography using the immunizing peptide.

Supplied at 0.5 mg/ml in Tris saline, 0.02% sodium azide, pH7.3 with 0.5% bovine serum albumin.

Aliquot and store at -20°C. Minimize freezing and thawing.

Applications Tested

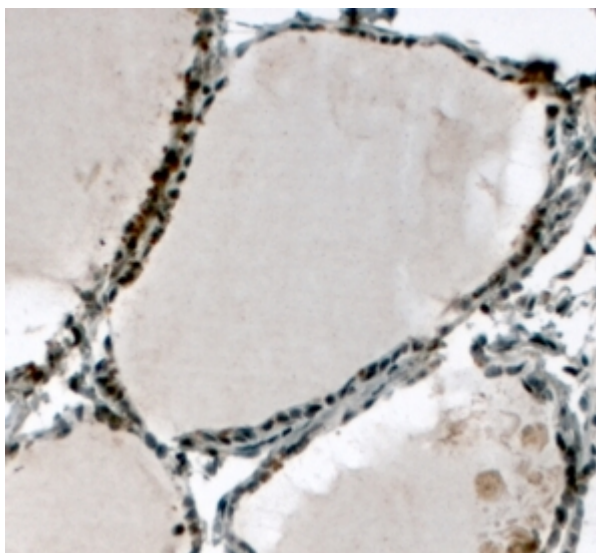
Peptide ELISA: antibody detection limit dilution 1:128000.

Western blot: Preliminary experiments in Human lysates of Lung, Kidney, Prostate and Testes gave no specific signal but low background (at antibody concentration up to 1µg/ml).

Species Reactivity

Tested:

Expected from sequence similarity: Human, Mouse, Rat, Cow



EB05511 (4µg/ml) staining of paraffin embedded Human Thyroid Gland. Steamed antigen retrieval with citrate buffer pH 6, HRP-staining. **This data is from a previous batch, not on sale.**