



Everest Biotech Ltd
Cherwell Innovation Centre
77 Heyford Park
Upper Heyford
Oxfordshire
OX25 5HD, United Kingdom

everestbiotech.com

sales@everestbiotech.com

support@everestbiotech.com

Tel +44 1869 238326

Fax +44 1869 238327

Research Use Only. Not for diagnostic or therapeutic use.

Storage: For long-term storage keep aliquots at -20°C. (Store no longer than 12 months at 4°C). Minimize freezing and thawing.

EB05305 - Goat Anti-ELMO2 Antibody

Size: 100µg specific antibody in 200µl



Target Protein

Principal Names: ELMO-2, CED-12, RP11-394O2.2, engulfment and cell motility 2, engulfment and cell motility 2, PH domain protein CED12A, ced-12 homolog 2, KIAA1834, FLJ11656, CED12, engulfment and cell motility 2 (ced-12 homolog, C. elegans), ELMO2

Official Symbol: ELMO2

Accession Number(s): NP_877496.1; NP_573403.1

Human GeneID(s): [63916](#)

Non-Human GeneID(s): 140579 (mouse)

Important Comments: NP_877496.1 and NP_573403.1 are variants that encode the same protein.

Immunogen

Peptide with sequence C-PKEPSSYDFVYHYG, from the C Terminus of the protein sequence according to NP_877496.1; NP_573403.1.

Please note the [peptide](#) is available for sale.

Purification and Storage

Purified from goat serum by ammonium sulphate precipitation followed by antigen affinity chromatography using the immunizing peptide.

Supplied at 0.5 mg/ml in Tris saline, 0.02% sodium azide, pH7.3 with 0.5% bovine serum albumin.

Aliquot and store at -20°C. Minimize freezing and thawing.

Applications Tested

Peptide ELISA: antibody detection limit dilution 1:32000.

Western blot: Approx 80kDa band seen in Human Brain lysate. Recommended for use at 1-3µg/ml.

IHC: In paraffin embedded Human Prostate shows pixulated staining in the cytoplasm of stroma cells. Recommended concentration, 3-6µg/ml.

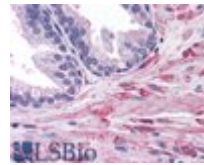
Species Reactivity

Tested: Human

Expected from sequence similarity: Human, Mouse, Rat, Dog, Pig, Cow



EB05305 staining (2 μ g/ml) of Human Brain lysate (RIPA buffer, 30 μ g total protein per lane). Primary incubated for 12 hour. Detected by western blot using chemiluminescence.



EB05305 (3.8 μ g/ml) staining of paraffin embedded Human Prostate. Steamed antigen retrieval with citrate buffer pH 6, AP-staining.