



UK Office

Everest Biotech Ltd

Cherwell Innovation Centre
77 Heyford Park
Upper Heyford
Oxfordshire
OX25 5HD
UK

Enquiries:

info@everestbiotech.com

Sales:

sales@everestbiotech.com

Tech support:

support@everestbiotech.com

Tel: +44 (0)1869 238326

Fax: +44 (0)1869 238327

US Office

Everest Biotech c/o Abcore

405 Maple Street, Suite A106
Ramona,
CA 92065
USA

Inquiries:

info@everestbiotech.com

Sales:

usasales@everestbiotech.com

Tech support:

support@everestbiotech.com

Tel: 888-320-4628 (toll-free)

Fax: 888-841-9041

www.everestbiotech.com

**Research Use Only. Not for
diagnostic or therapeutic use.**

EB05295 - Goat Anti-ELMO3 Antibody

Size: 100µg specific antibody in 200µl



Target Protein

Principal Names: ELMO3, engulfment and cell motility 3 (ced-12 homolog, C. elegans), CED12, FLJ13824, ced-12 homolog 3, engulfment and cell motility 3, CED-12, ELMO-3

Official Symbol: ELMO3

Accession Number(s): NP_078988.2

Human GeneID(s): [79767](#)

Immunogen

Peptide with sequence TNFNFCYDCSIAEP, from the C Terminus of the protein sequence according to NP_078988.2.

Please note the [peptide](#) is available for sale.

Purification and Storage

Purified from goat serum by ammonium sulphate precipitation followed by antigen affinity chromatography using the immunizing peptide.

Supplied at 0.5 mg/ml in Tris saline, 0.02% sodium azide, pH7.3 with 0.5% bovine serum albumin.

Aliquot and store at -20°C. Minimize freezing and thawing.

Applications Tested

Peptide ELISA: antibody detection limit dilution 1:16000.

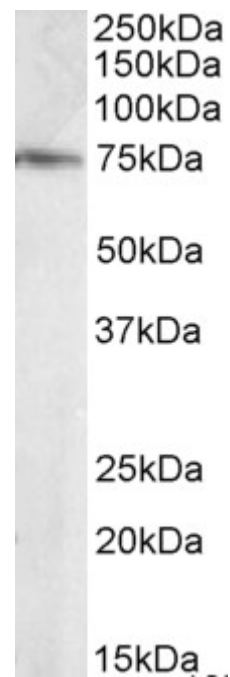
Western blot: Approx 75kDa band observed in Human Brain (Hippocampus) lysates (calculated MW of 70.0kDa according to NP_078988.2). Recommended concentration: 0.1-0.3µg/ml.

IHC: In paraffin embedded Human Prostate shows vesiculate staining in the cytoplasm of secretory cells. Recommended concentration, 5-10µg/ml.

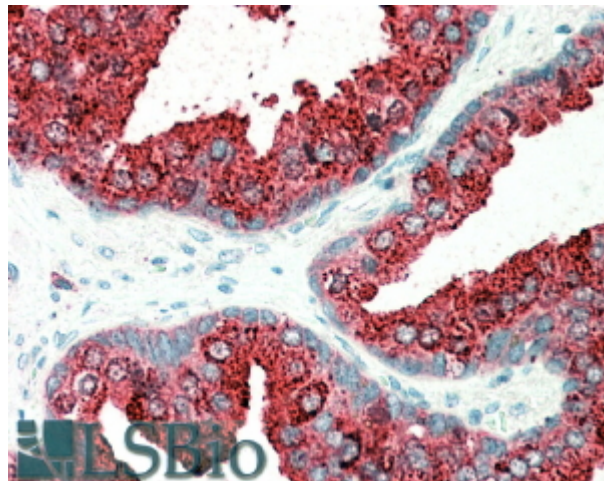
Species Reactivity

Tested: Human

Expected from sequence similarity: Human, Dog



EB05295 staining (0.1 µg/ml) of Human Brain (Hippocampus) lysate (RIPA buffer, 35 µg total protein per lane). Primary incubated for 1 hour. Detected by chemiluminescence.



EB05295 (5 µg/ml) staining of paraffin embedded Human Prostate. Steamed antigen retrieval with citrate buffer pH 6, AP-staining.