



UK Office

Everest Biotech Ltd

Cherwell Innovation Centre
77 Heyford Park
Upper Heyford
Oxfordshire
OX25 5HD
UK

Enquiries:

info@everestbiotech.com

Sales:

sales@everestbiotech.com

Tech support:

support@everestbiotech.com

Tel: +44 (0)1869 238326

Fax: +44 (0)1869 238327

US Office

Everest Biotech c/o Abcore

405 Maple Street, Suite A106
Ramona,
CA 92065
USA

Inquiries:

info@everestbiotech.com

Sales:

usasales@everestbiotech.com

Tech support:

support@everestbiotech.com

Tel: 888-320-4628 (toll-free)

Fax: 888-841-9041

www.everestbiotech.com

**Research Use Only. Not for
diagnostic or therapeutic use.**

EB11694 - Goat Anti-Endophilin-A1 / SH3GL2 Antibody

Size: 100µg specific antibody in 200µl



Target Protein

Principal Names: bA335L15.1 (SH3-domain GRB2-like 2), CNSA2, EEN-B1, endophilin, Endophilin A1 BAR domain, endophilin-1, FLJ20276, FLJ25015, OTTHUMP00000021084, SH3 domain protein 2A, SH3 domain-containing GRB2-like protein 2, SH3D2A, SH3-domain GRB2-like 2, SH3GL2, SH3P4

Official Symbol: SH3GL2

Accession Number(s): NP_003017.1

Human GeneID(s): [6456](#)

Immunogen

Peptide with sequence C-SLEFPTGDSTQPN, from the internal region of the protein sequence according to NP_003017.1.

Please note the [peptide](#) is available for sale.

Purification and Storage

Purified from goat serum by ammonium sulphate precipitation followed by antigen affinity chromatography using the immunizing peptide.

Supplied at 0.5 mg/ml in Tris saline, 0.02% sodium azide, pH7.3 with 0.5% bovine serum albumin.

Aliquot and store at -20°C. Minimize freezing and thawing.

Applications Tested

Peptide ELISA: antibody detection limit dilution 1:64000.

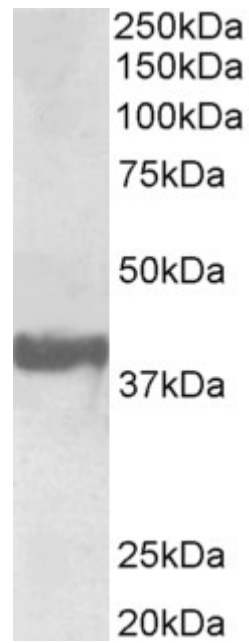
Western blot: Approx 38kDa band observed in Human Brain (Frontal Cortex) lysates (calculated MW of 40.0kDa according to NP_003017.1). Recommended concentration: 0.3-1µg/ml.

IHC: In paraffin embedded Human Cerebral Cortex shows staining of cytoplasm in some but not all neuronal cells. Recommended concentration, 5-10µg/ml.

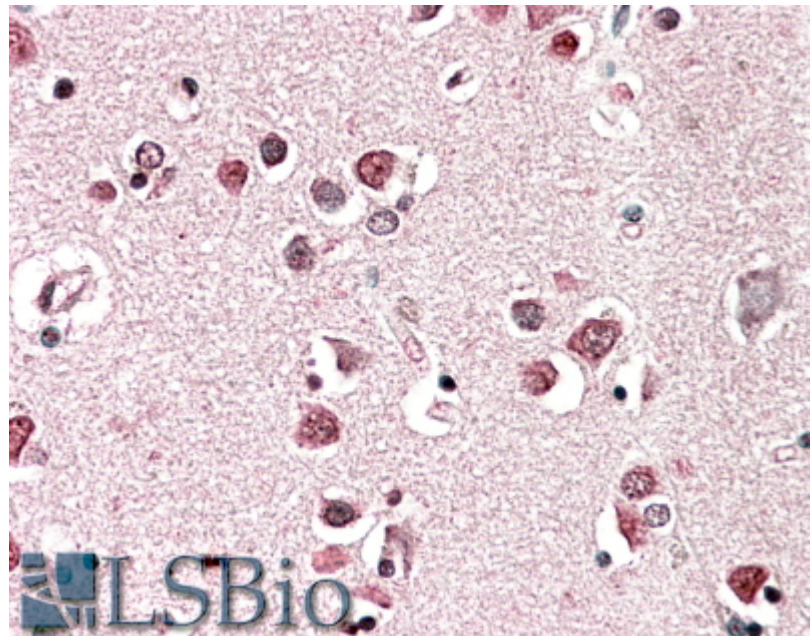
Species Reactivity

Tested: Human

Expected from sequence similarity: Human, Pig



EB11694 (0.3 μ g/ml) staining of Human Frontal Cortex lysate (35 μ g protein in RIPA buffer). Primary incubation was 1 hour. Detected by chemiluminescence.



EB11694 (5 μ g/ml) staining of paraffin embedded Human Cerebral Cortex. Steamed antigen retrieval with citrate buffer pH 6, AP-staining.