



## UK Office

### Everest Biotech Ltd

Cherwell Innovation Centre  
77 Heyford Park  
Upper Heyford  
Oxfordshire  
OX25 5HD  
UK

Enquiries:

[info@everestbiotech.com](mailto:info@everestbiotech.com)

Sales:

[sales@everestbiotech.com](mailto:sales@everestbiotech.com)

Tech support:

[support@everestbiotech.com](mailto:support@everestbiotech.com)

Tel: +44 (0)1869 238326

Fax: +44 (0)1869 238327

## US Office

### Everest Biotech c/o Abcore

405 Maple Street, Suite A106  
Ramona,  
CA 92065  
USA

Inquiries:

[info@everestbiotech.com](mailto:info@everestbiotech.com)

Sales:

[usasales@everestbiotech.com](mailto:usasales@everestbiotech.com)

Tech support:

[support@everestbiotech.com](mailto:support@everestbiotech.com)

Tel: 888-320-4628 (toll-free)

Fax: 888-841-9041

[www.everestbiotech.com](http://www.everestbiotech.com)

**Research Use Only. Not for  
diagnostic or therapeutic use.**

## EB11694-B - Goat Anti-Endophilin-A1 / SH3GL2, Biotinylated Antibody

Size: 100µg specific antibody in 200µl



### Target Protein

**Principal Names:** SH3GL2, SH3 domain containing GRB2 like 2, CNSA2, EEN-B1, SH3D2A, SH3P4, Endophilin A1 BAR domain, SH3 domain protein 2A, SH3 domain-containing GRB2-like protein 2, SH3-domain GRB2-like 2, bA335L15.1 (SH3-domain GRB2-like 2), endophilin-1

**Official Symbol:** SH3GL2

**Accession Number(s):** NP\_003017.1

**Human GeneID(s):** [6456](#)

### Immunogen

Peptide with sequence CSLEFPTGDSTQPN., from the internal region of the protein sequence according to NP\_003017.1.

Please note the [peptide](#) is available for sale.

### Purification and Storage

Purified from goat serum by ammonium sulphate precipitation followed by antigen affinity chromatography using the immunizing peptide.

Supplied at 0.5 mg/ml in Tris saline, 0.02% sodium azide, pH7.3 with 0.5% bovine serum albumin.

Aliquot and store at -20°C. Minimize freezing and thawing.

### Applications Tested

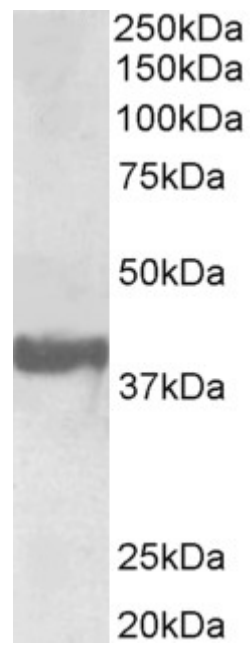
**Peptide ELISA:** antibody detection limit dilution 1:64000.

**Western blot:** Approx 38kDa band observed in Human Brain (Frontal Cortex) lysates (calculated MW of 40.0kDa according to NP\_003017.1). Recommended concentration: 0.3-1µg/ml. See non-biotinylated parental product's datasheet for further QC data

### Species Reactivity

**Tested:** Human

**Expected from sequence similarity:** Human, Pig



Biotinylated EB11694 (0.3 $\mu$ g/ml) staining of Human Frontal Cortex lysate (35 $\mu$ g protein in RIPA buffer). Primary incubation was 1 hour. Detected by chemiluminescence.