



UK Office

Everest Biotech Ltd

Cherwell Innovation Centre
77 Heyford Park
Upper Heyford
Oxfordshire
OX25 5HD
UK

Enquiries:

info@everestbiotech.com

Sales:

sales@everestbiotech.com

Tech support:

support@everestbiotech.com

Tel: +44 (0)1869 238326

www.everestbiotech.com

**Research Use Only. Not for
diagnostic or therapeutic use.**

EB07995 - Goat Anti-ENOX2 / APK1 Antibody

Size: 100µg specific antibody in 200µl



Target Protein

Principal Names: ecto-NOX disulfide-thiol exchanger 2, RP5-875H3.1, APK1, COVA1, tNOX, APK1 antigen, cytosolic ovarian carcinoma antigen 1

Official Symbol: ENOX2

Accession Number(s): NP_006366.2; NP_872114.1

Human GeneID(s): [10495](#)

Important Comments: This antibody is expected to recognise both reported isoforms (NP_006366.2; NP_872114.1).

Immunogen

Peptide with sequence C-EKLDKDDKLQVEK, from the internal region of the protein sequence according to NP_006366.2; NP_872114.1.

Please note the [peptide](#) is available for sale.

Purification and Storage

Purified from goat serum by ammonium sulphate precipitation followed by antigen affinity chromatography using the immunizing peptide.

Supplied at 0.5 mg/ml in Tris saline, 0.02% sodium azide, pH7.3 with 0.5% bovine serum albumin.

Aliquot and store at -20°C. Minimize freezing and thawing.

Applications Tested

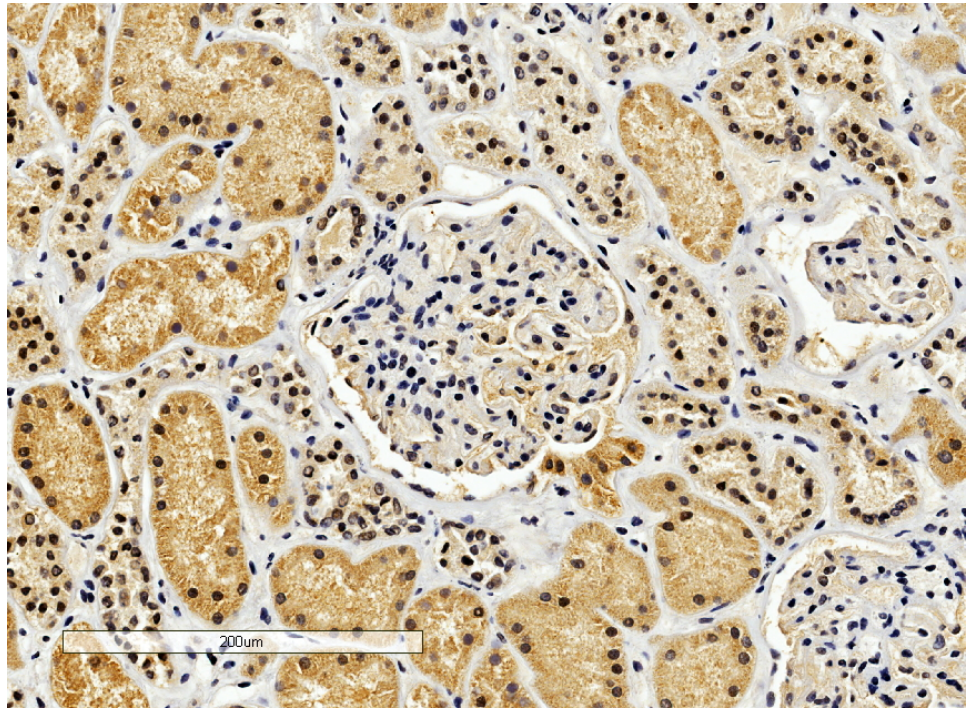
Peptide ELISA: antibody detection limit dilution 1:64000.

IHC: In paraffin embedded Human Kidney shows cytoplasm staining preferentially in PC. Recommended concentration, 2-4µg/ml.

Species Reactivity

Tested: Human

Expected from sequence similarity: Human, Dog



EB07995 (4 μ g/ml) staining of paraffin embedded Human Kidney. Microwaved antigen retrieval with Tris/EDTA buffer pH9, HRP-staining.