



UK Office

Everest Biotech Ltd

Cherwell Innovation Centre
77 Heyford Park
Upper Heyford
Oxfordshire
OX25 5HD
UK

Enquiries:

info@everestbiotech.com

Sales:

sales@everestbiotech.com

Tech support:

support@everestbiotech.com

Tel: +44 (0)1869 238326

www.everestbiotech.com

**Research Use Only. Not for
diagnostic or therapeutic use.**

EB12236 - Goat Anti-ENPP2 / AUTOTAXIN (aa698-712) Antibody

Size: 100µg specific antibody in 200µl



Target Protein

Principal Names: ENPP2, ectonucleotide pyrophosphatase/phosphodiesterase 2, ATX, ATX-X, AUTOTAXIN, LysoPLD, NPP2, PD-IALPHA, PDNP2, E-NPP 2, autotaxin-t, ectonucleotide pyrophosphatase/phosphodiesterase family member 2, extracellular lysophospholipase D, phosphodiesterase

Official Symbol: ENPP2

Accession Number(s): NP_006200.3; NP_001035181.1, NP_001124335.1

Human GeneID(s): [5168](#)

Important Comments: This antibody is expected to recognize all reported isoforms (NP_006200.3; NP_001035181.1, NP_001124335.1).

Immunogen

Peptide with sequence PDHLTSCVRPDVRS, from the internal region of the protein sequence according to NP_006200.3; NP_001035181.1, NP_001124335.1.

Please note the [peptide](#) is available for sale.

Purification and Storage

Purified from goat serum by ammonium sulphate precipitation followed by antigen affinity chromatography using the immunizing peptide.

Supplied at 0.5 mg/ml in Tris saline, 0.02% sodium azide, pH7.3 with 0.5% bovine serum albumin.

Aliquot and store at -20°C. Minimize freezing and thawing.

Applications Tested

Peptide ELISA: antibody detection limit dilution 1:128000.

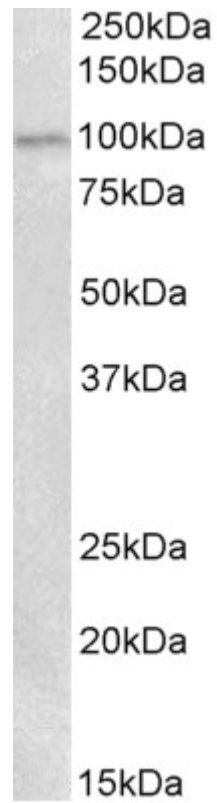
Western blot: Approx 100kDa band observed in Human Placenta lysates (calculated MW of 105kDa according to NP_006200.3). Recommended concentration: 0.3-1µg/ml. Primary incubation was 1 hour.

IHC: Paraffin embedded Human Liver and Brain (Cortex). Recommended concentration: 5µg/ml.

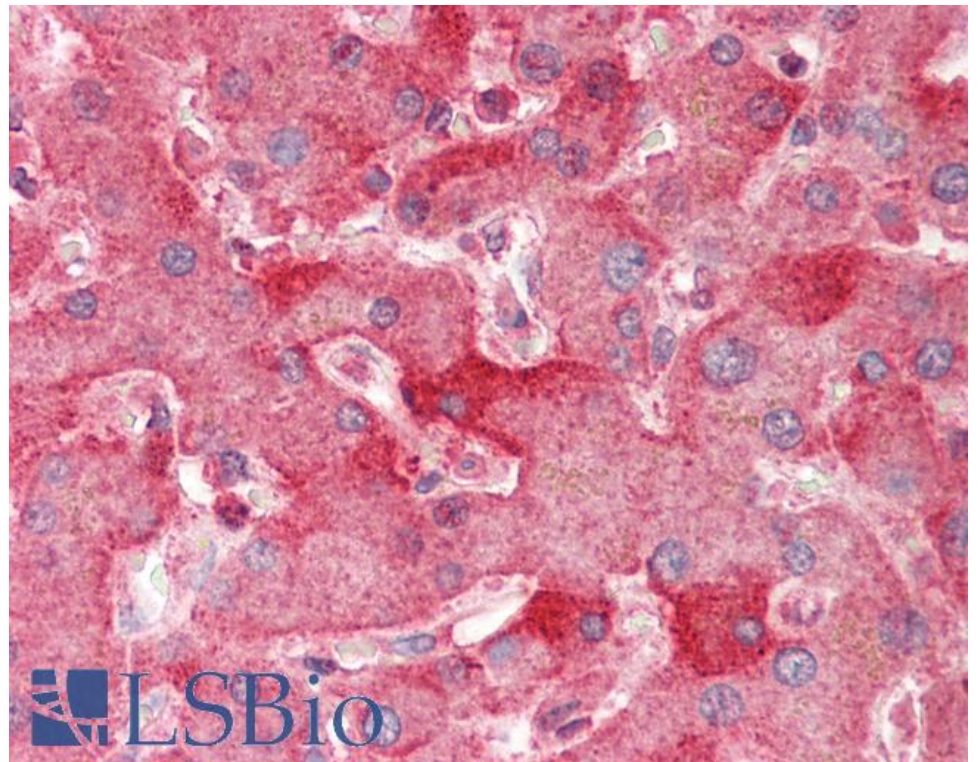
Species Reactivity

Tested: Human

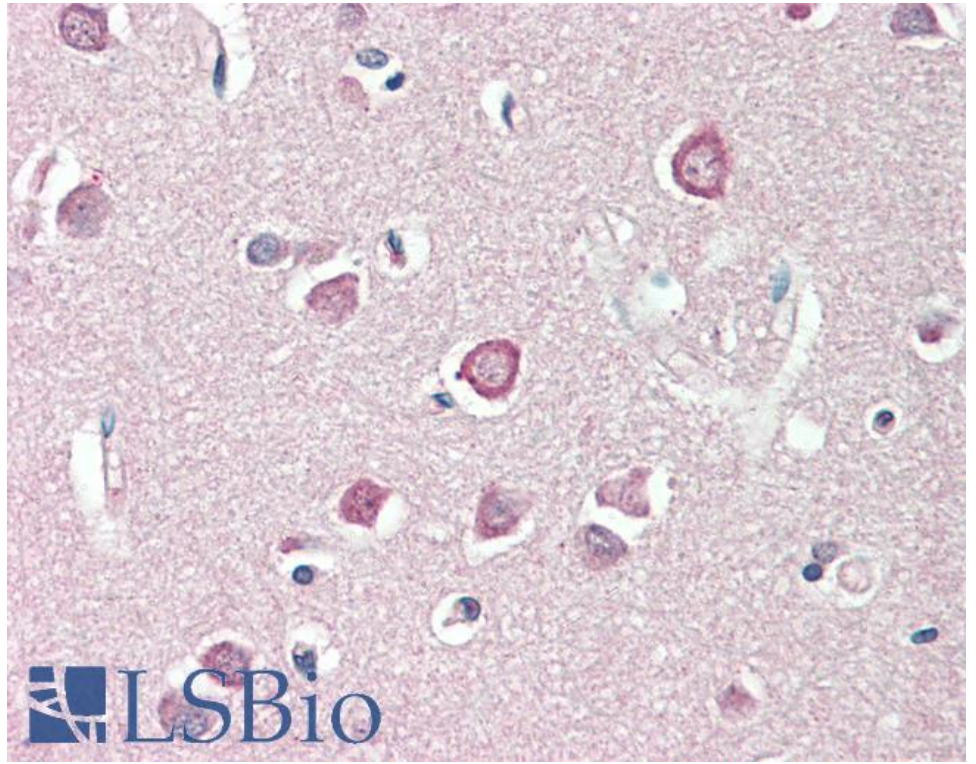
Expected from sequence similarity: Human



EB12236 (0.3 μ g/ml) staining of Human Placenta lysate (35 μ g protein in RIPA buffer). Detected by chemiluminescence.



EB12236 (5 μ g/ml) staining of paraffin embedded Human Liver. Steamed antigen retrieval with citrate buffer pH 6, AP-staining.



EB12236 (5µg/ml) staining of paraffin embedded Human Cortex. Steamed antigen retrieval with citrate buffer pH 6, AP-staining.