



## UK Office

### Everest Biotech Ltd

Cherwell Innovation Centre  
77 Heyford Park  
Upper Heyford  
Oxfordshire  
OX25 5HD  
UK

Enquiries:

[info@everestbiotech.com](mailto:info@everestbiotech.com)

Sales:

[sales@everestbiotech.com](mailto:sales@everestbiotech.com)

Tech support:

[support@everestbiotech.com](mailto:support@everestbiotech.com)

Tel: +44 (0)1869 238326

Fax: +44 (0)1869 238327

## US Office

### Everest Biotech c/o Abcore

405 Maple Street, Suite A106  
Ramona,  
CA 92065  
USA

Inquiries:

[info@everestbiotech.com](mailto:info@everestbiotech.com)

Sales:

[usasales@everestbiotech.com](mailto:usasales@everestbiotech.com)

Tech support:

[support@everestbiotech.com](mailto:support@everestbiotech.com)

Tel: 888-320-4628 (toll-free)

Fax: 888-841-9041

[www.everestbiotech.com](http://www.everestbiotech.com)

**Research Use Only. Not for  
diagnostic or therapeutic use.**

## EB08973 - Goat Anti-ENT1 Antibody

Size: 100µg specific antibody in 200µl



### Target Protein

**Principal Names:** SLC29A1, solute carrier family 29 (nucleoside transporters), member 1, ENT1, MGC1465, MGC3778, equilibrative nitrobenzylmercaptopurine riboside (NBMPR)-sensitive nucleoside transporter, equilibrative nucleoside transporter 1, nucleoside transporter, es-type, solute carrier family 29, member 1

**Official Symbol:** SLC29A1

**Accession Number(s):** NP\_001071643.1

**Human GeneID(s):** [2030](#)

**Important Comments:** Reported variants represent identical protein: NP\_001071642.1, NP\_001071645.1, NP\_001071644.1, NP\_004946.1, NP\_001071643.1

### Immunogen

Peptide with sequence TSHQPQDRYKAVW-C, from the N Terminus of the protein sequence according to NP\_001071643.1.

Please note the [peptide](#) is available for sale.

### Purification and Storage

Purified from goat serum by ammonium sulphate precipitation followed by antigen affinity chromatography using the immunizing peptide.

Supplied at 0.5 mg/ml in Tris saline, 0.02% sodium azide, pH7.3 with 0.5% bovine serum albumin.

Aliquot and store at -20°C. Minimize freezing and thawing.

### Applications Tested

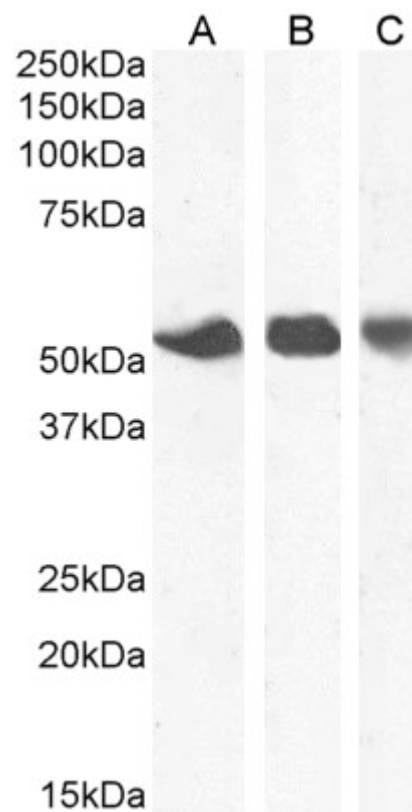
**Peptide ELISA:** antibody detection limit dilution 1:4000.

**Western blot:** Approx 50-55kDa band observed in Human Placenta, Spleen and Breast lysates (calculated MW of 50.2kDa according to NP\_001071643.1). Recommended concentration: 0.3-1µg/ml. Primary incubation 1 hour at room temperature.

### Species Reactivity

**Tested:** Human

**Expected from sequence similarity:** Human, Mouse, Rat, Dog, Cow



EB08973 (1 µg/ml) staining of Human Breast (A), Placenta (B) and Spleen (C) lysate. (35 µg protein in RIPA buffer). Detected by chemiluminescence.