



Everest Biotech Ltd  
Cherwell Innovation Centre  
77 Heyford Park  
Upper Heyford  
Oxfordshire  
OX25 5HD, United Kingdom

[everestbiotech.com](http://everestbiotech.com)

[sales@everestbiotech.com](mailto:sales@everestbiotech.com)

[support@everestbiotech.com](mailto:support@everestbiotech.com)

Tel +44 1869 238326

Fax +44 1869 238327

**Research Use Only. Not for diagnostic or therapeutic use.**

Storage: For long-term storage keep aliquots at -20°C. (Store no longer than 12 months at 4°C). Minimize freezing and thawing.

## EB07123 - Goat Anti-EP4 prostaglandin receptor Antibody

Size: 100µg specific antibody in 200µl



### Target Protein

**Principal Names:** prostaglandin E2 receptor, PGE receptor, EP4 subtype prostaglandin E receptor 4, subtype EP4, EP4R, EP4, PTGER4, MGC126583, prostaglandin E receptor 4 (subtype EP4)

**Official Symbol:** PTGER4

**Accession Number(s):** NP\_000949.1

**Human GeneID(s):** [5734](#)

### Immunogen

Peptide with sequence C-LEREVSKNPDLQA, from the internal region of the protein sequence according to NP\_000949.1.

Please note the [peptide](#) is available for sale.

### Purification and Storage

Purified from goat serum by ammonium sulphate precipitation followed by antigen affinity chromatography using the immunizing peptide.

Supplied at 0.5 mg/ml in Tris saline, 0.02% sodium azide, pH7.3 with 0.5% bovine serum albumin.

Aliquot and store at -20°C. Minimize freezing and thawing.

### Applications Tested

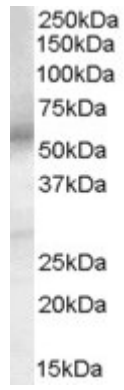
**Peptide ELISA:** antibody detection limit dilution 1:16000.

**Western blot:** Approx 55kDa band observed in Human Testes lysates (calculated MW of 53.1kDa according to NP\_000949.1). Recommended concentration: 0.1-0.3µg/ml.

### Species Reactivity

**Tested:** Human

**Expected from sequence similarity:** Human, Dog



EB07123 (0.1 $\mu$ g/ml) staining of Human Testes lysate (35 $\mu$ g protein in RIPA buffer). Primary incubation was 1 hour. Detected by chemiluminescence.