



## UK Office

### Everest Biotech Ltd

Cherwell Innovation Centre  
77 Heyford Park  
Upper Heyford  
Oxfordshire  
OX25 5HD  
UK

Enquiries:

[info@everestbiotech.com](mailto:info@everestbiotech.com)

Sales:

[sales@everestbiotech.com](mailto:sales@everestbiotech.com)

Tech support:

[support@everestbiotech.com](mailto:support@everestbiotech.com)

Tel: +44 (0)1869 238326

Fax: +44 (0)1869 238327

## US Office

### Everest Biotech c/o Abcore

405 Maple Street, Suite A106  
Ramona,  
CA 92065  
USA

Inquiries:

[info@everestbiotech.com](mailto:info@everestbiotech.com)

Sales:

[usasales@everestbiotech.com](mailto:usasales@everestbiotech.com)

Tech support:

[support@everestbiotech.com](mailto:support@everestbiotech.com)

Tel: 888-320-4628 (toll-free)

Fax: 888-841-9041

[www.everestbiotech.com](http://www.everestbiotech.com)

**Research Use Only. Not for  
diagnostic or therapeutic use.**

## EB07445 - Goat Anti-EPHB2 / DRT / Nuk Antibody

Size: 100µg specific antibody in 200µl



### Target Protein

**Principal Names:** EPHB2, DRT, EPH receptor B2, Cek5, Qek5, Sek3, ETECK, Prkm5, EPHT3, ERK, Hek5, MGC87492, Tyro5, developmentally-regulated eph-related tyrosine kinase, elk-related tyrosine kinase, eph tyrosine kinase 3, ephrin receptor EphB2

**Official Symbol:** EPHB2

**Accession Number(s):** NP\_004433.2; NP\_059145.2

**Human GeneID(s):** [2048](#)

**Non-Human GeneID(s):** 13844 (mouse)

**Important Comments:** This antibody is expected to recognise both reported isoforms (NP\_059145.2 and NP\_004433.2).

### Immunogen

Peptide with sequence C-QKDRNHRPKFGQ, from the internal region of the protein sequence according to NP\_004433.2; NP\_059145.2.

Please note the [peptide](#) is available for sale.

### Purification and Storage

Purified from goat serum by ammonium sulphate precipitation followed by antigen affinity chromatography using the immunizing peptide.

Supplied at 0.5 mg/ml in Tris saline, 0.02% sodium azide, pH7.3 with 0.5% bovine serum albumin.

Aliquot and store at -20°C. Minimize freezing and thawing.

### Applications Tested

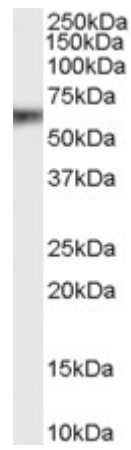
**Peptide ELISA:** antibody detection limit dilution 1:4000.

**Western blot:** Approx 60kDa band observed in Human Lung and Placenta lysates (calculated MW of 110kDa according to NP\_059145.2 and NP\_004433.2). The observed molecular weight corresponds to earlier findings in literature with different antibodies (Litterst et al, J Biol Chem. 2007 Apr 10; PMID: 17428795). Recommended concentration: 1-3µg/ml.

### Species Reactivity

**Tested:** Human

**Expected from sequence similarity:** Human, Mouse, Rat, Dog



EB07445 (1µg/ml) staining of Human Lung lysate (35µg protein in RIPA buffer). Primary incubation was 1 hour.  
Detected by chemiluminescence.