



UK Office

Everest Biotech Ltd

Cherwell Innovation Centre
77 Heyford Park
Upper Heyford
Oxfordshire
OX25 5HD
UK

Enquiries:

info@everestbiotech.com

Sales:

sales@everestbiotech.com

Tech support:

support@everestbiotech.com

Tel: +44 (0)1869 238326

Fax: +44 (0)1869 238327

US Office

Everest Biotech c/o Abcore

405 Maple Street, Suite A106
Ramona,
CA 92065
USA

Inquiries:

info@everestbiotech.com

Sales:

usasales@everestbiotech.com

Tech support:

support@everestbiotech.com

Tel: 888-320-4628 (toll-free)

Fax: 888-841-9041

www.everestbiotech.com

**Research Use Only. Not for
diagnostic or therapeutic use.**

EB12761 - Goat Anti-EPHX2 (aa238-251) Antibody

Size: 100µg specific antibody in 200µl



Target Protein

Principal Names: EPHX2, epoxide hydrolase 2, cytoplasmic, CEH, SEH, bifunctional epoxide hydrolase 2, epoxide hydratase, epoxide hydrolase 2, cytosolic, epoxide hydrolase, soluble

Official Symbol: EPHX2

Accession Number(s): NP_001970.2; NP_001243411.1; NP_001243412.1

Human GeneID(s): [2053](#)

Important Comments: This antibody is expected to recognize all reported isoforms (NP_001970.2; NP_001243411.1; NP_001243412.1). Reported variants represent identical protein: NP_001243413.1, NP_001243411.1.

Immunogen

Peptide with sequence C-SHGYVTVKPRVRLH, from the internal region of the protein sequence according to NP_001970.2; NP_001243411.1; NP_001243412.1.

Please note the [peptide](#) is available for sale.

Purification and Storage

Purified from goat serum by ammonium sulphate precipitation followed by antigen affinity chromatography using the immunizing peptide.

Supplied at 0.5 mg/ml in Tris saline, 0.02% sodium azide, pH7.3 with 0.5% bovine serum albumin.

Aliquot and store at -20°C. Minimize freezing and thawing.

Applications Tested

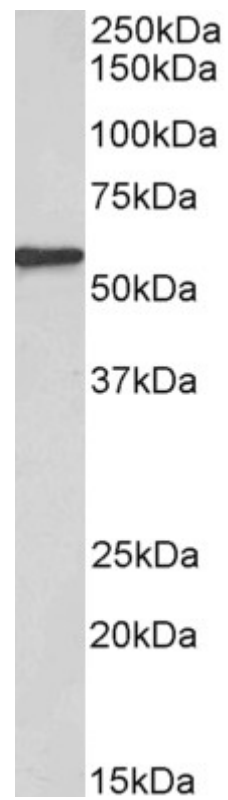
Peptide ELISA: antibody detection limit dilution 1:128000.

Western blot: Approx 57kDa band observed in Human Kidney lysates (calculated MW of 57.1kDa according to NP_001243411.1). Recommended concentration: 0.3-1µg/ml.

Species Reactivity

Tested: Human

Expected from sequence similarity: Human



EB12761 (0.3 μ g/ml) staining of Human Kidney lysate (35 μ g protein in RIPA buffer). Primary incubation was 1 hour. Detected by chemiluminescence.