



UK Office

Everest Biotech Ltd

Cherwell Innovation Centre
77 Heyford Park
Upper Heyford
Oxfordshire
OX25 5HD
UK

Enquiries:

info@everestbiotech.com

Sales:

sales@everestbiotech.com

Tech support:

support@everestbiotech.com

Tel: +44 (0)1869 238326

Fax: +44 (0)1869 238327

US Office

Everest Biotech c/o Abcore

405 Maple Street, Suite A106
Ramona,
CA 92065
USA

Inquiries:

info@everestbiotech.com

Sales:

usasales@everestbiotech.com

Tech support:

support@everestbiotech.com

Tel: 888-320-4628 (toll-free)

Fax: 888-841-9041

www.everestbiotech.com

**Research Use Only. Not for
diagnostic or therapeutic use.**

EB06081 - Goat Anti-EPS8 Antibody

Size: 100µg specific antibody in 200µl



Target Protein

Principal Names: EPS8, epidermal growth factor receptor pathway substrate 8

Official Symbol: EPS8

Accession Number(s): NP_004438.3

Human GeneID(s): [2059](#)

Non-Human GeneID(s): 13860 (mouse)

Immunogen

Peptide with sequence C-SGVESFDEGSSH, from the C Terminus of the protein sequence according to NP_004438.3.

Please note the [peptide](#) is available for sale.

Purification and Storage

Purified from goat serum by ammonium sulphate precipitation followed by antigen affinity chromatography using the immunizing peptide.

Supplied at 0.5 mg/ml in Tris saline, 0.02% sodium azide, pH7.3 with 0.5% bovine serum albumin.

Aliquot and store at -20°C. Minimize freezing and thawing.

Applications Tested

Peptide ELISA: antibody detection limit dilution 1:8000.

Western blot: Approx. 100kDa band observed in lysates of cell line NIH3T3 (calculated MW of 91.9kDa according to NP_004438.3). Recommended concentration: 1-3µg/ml. An additional band of unknown identity was also consistently observed at 70kDa. This band was successfully blocked by incubation with the immunizing peptide. Primary incubation was 1 hour.

IHC: Paraffin embedded Human Kidney and Pancreas. Recommended concentration: 6-8µg/ml.

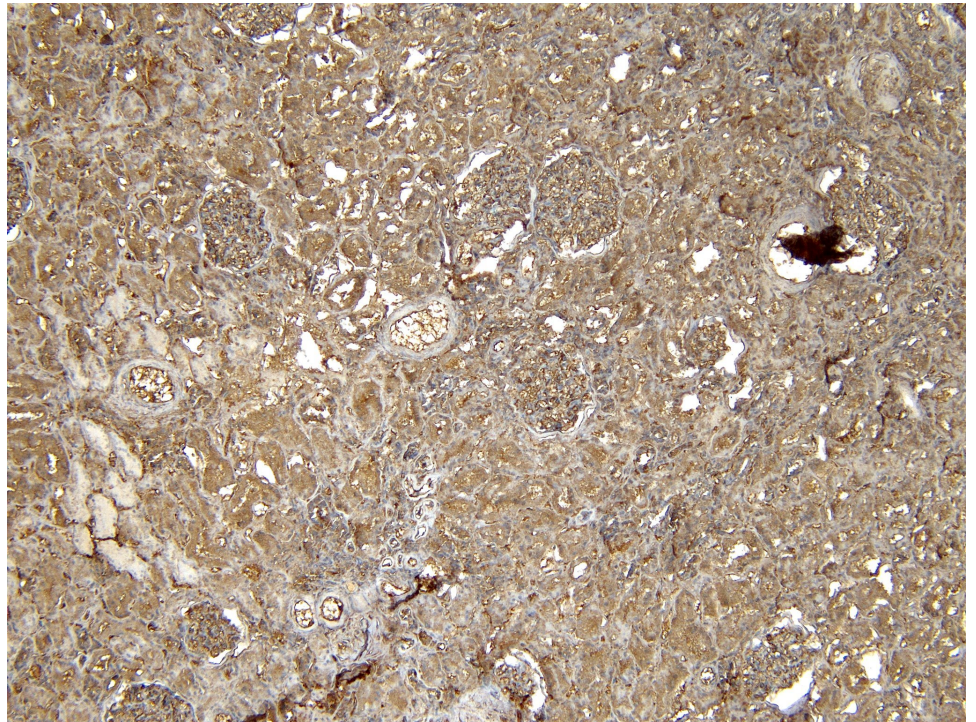
Species Reactivity

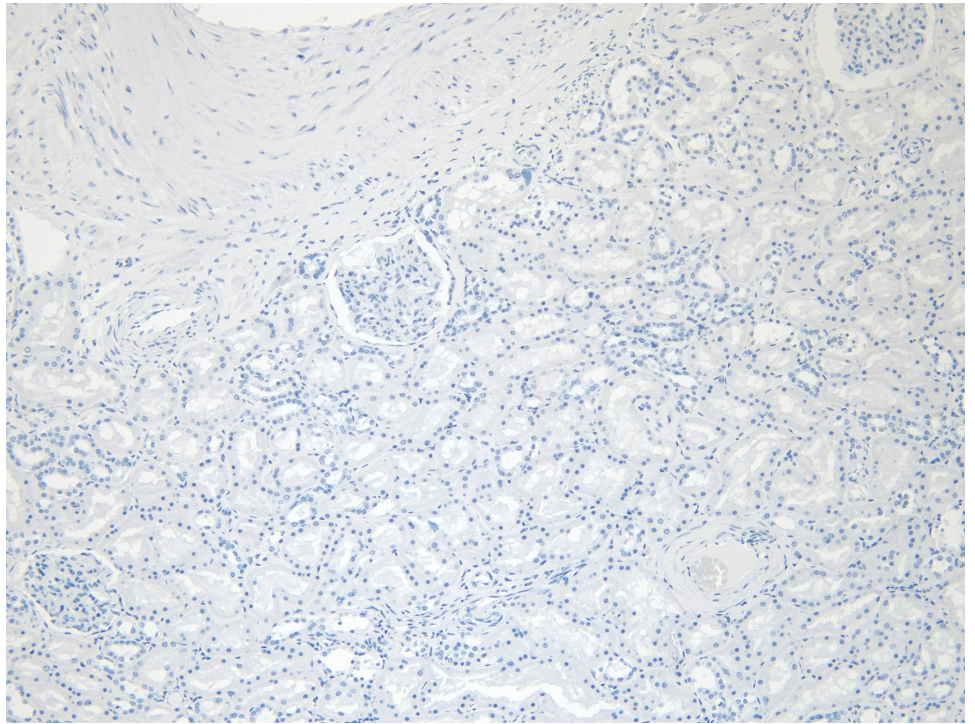
Tested: Human, Mouse

Expected from sequence similarity: Human, Mouse, Rat, Dog, Pig

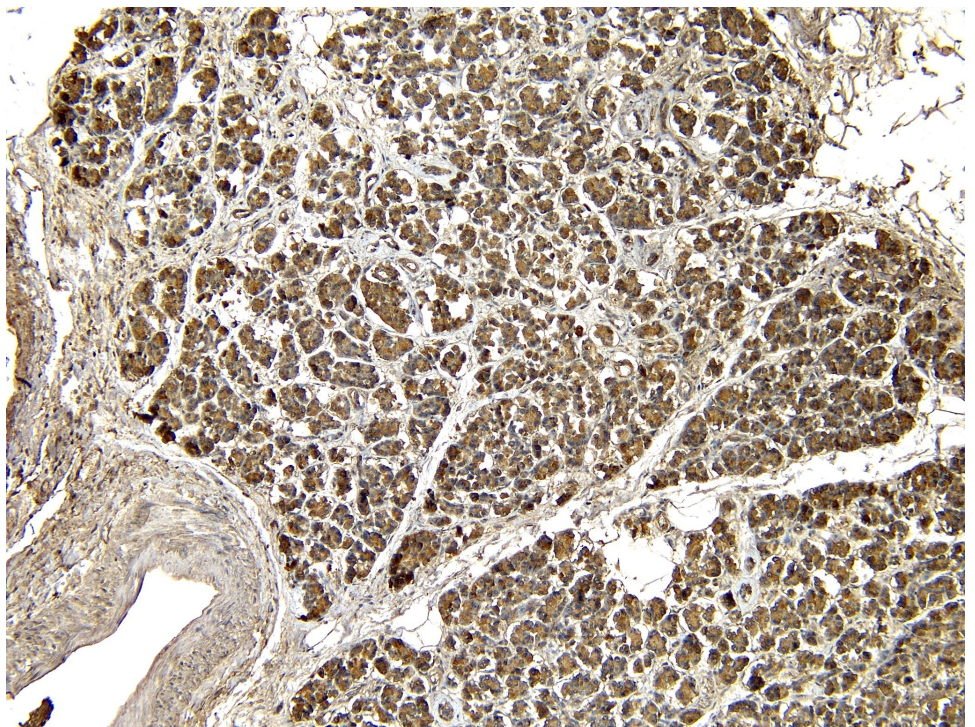


EB06081 (1 μ g/ml) staining of lysates of cell line NIH3T3 (35 μ g protein in RIPA buffer). Detected by chemiluminescence.

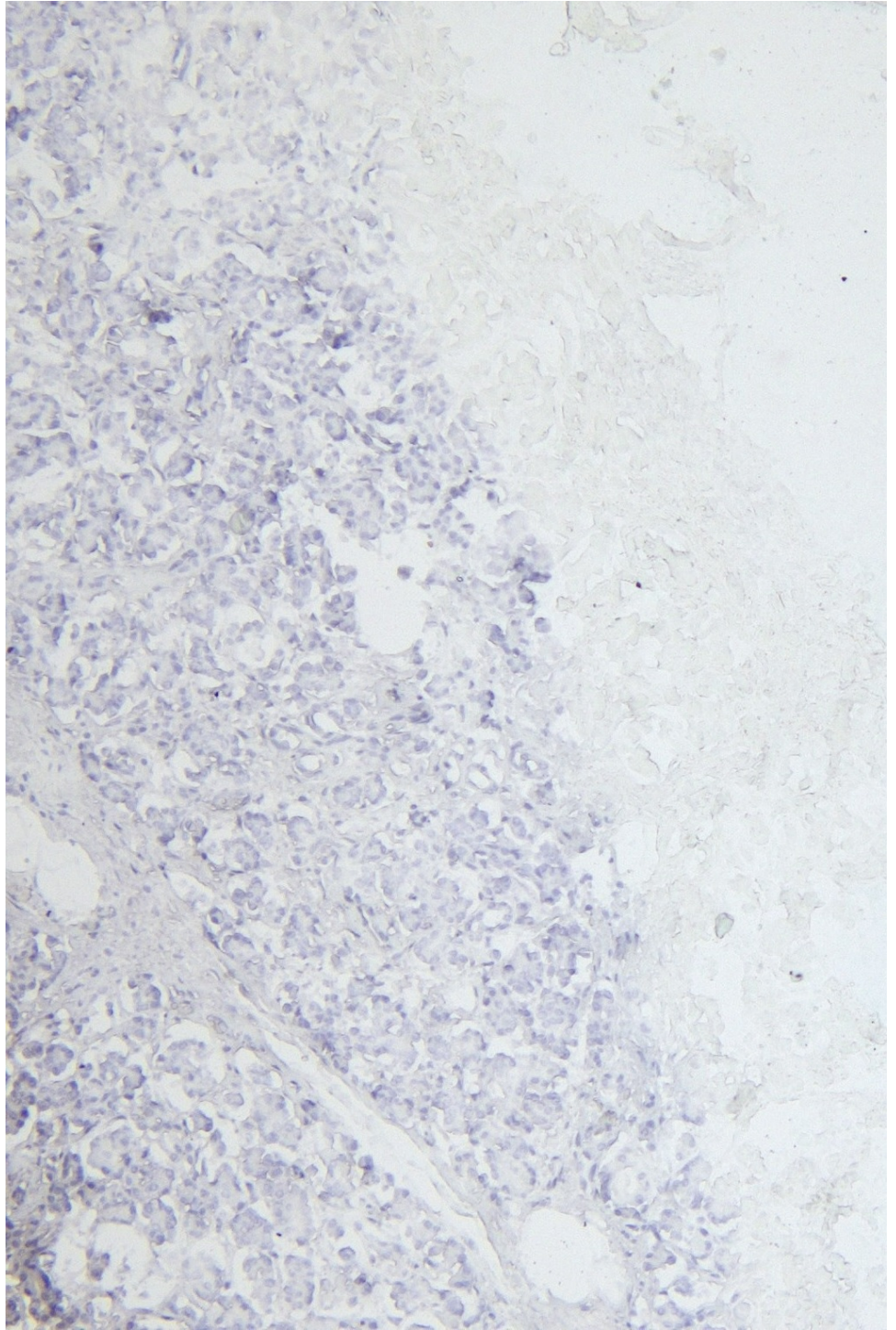




EB06081 Negative Control showing staining of paraffin embedded Human Kidney, with no primary antibody.



EB06081 (8 μ g/ml) staining of paraffin embedded Human Pancreas. Heat induced antigen retrieval with citrate buffer pH 6, HRP-staining.



EB06081 Negative Control showing staining of paraffin embedded Human Pancreas, with no primary antibody.