



UK Office

Everest Biotech Ltd

Cherwell Innovation Centre
77 Heyford Park
Upper Heyford
Oxfordshire
OX25 5HD
UK

Enquiries:

info@everestbiotech.com

Sales:

sales@everestbiotech.com

Tech support:

support@everestbiotech.com

Tel: +44 (0)1869 238326

Fax: +44 (0)1869 238327

US Office

Everest Biotech c/o Abcore

405 Maple Street, Suite A106
Ramona,
CA 92065
USA

Inquiries:

info@everestbiotech.com

Sales:

usasales@everestbiotech.com

Tech support:

support@everestbiotech.com

Tel: 888-320-4628 (toll-free)

Fax: 888-841-9041

www.everestbiotech.com

**Research Use Only. Not for
diagnostic or therapeutic use.**

EB06903 - Goat Anti-ERBB3 / HER3 Antibody

Size: 100µg specific antibody in 200µl



Target Protein

Principal Names: ERBB3, HER3, v-erb-b2 erythroblastic leukemia viral oncogene homolog 3 (avian), HGNC:3431, ErbB-3, MDA-BF-1, c-erbB-3, c-erbB3, erbB3-S, p180-ErbB3, p45-sErbB3, p85-sErbB3, erbB-3, LCCS2, MGC88033, receptor tyrosine-protein kinase erbB-3, v-erb-b2 avian erythroblastic leukemia viral oncogene homolog 3

Official Symbol: ERBB3

Accession Number(s): NP_001973.2

Human GeneID(s): [2065](#)

Non-Human GeneID(s): 13867 (mouse), 29496 (rat)

Important Comments: This antibody is expected to recognise isoform 1 (NP_001973.2) only.

Immunogen

Peptide with sequence C-HSRLFPKANAQRT, from the C Terminus of the protein sequence according to NP_001973.2.

Please note the [peptide](#) is available for sale.

Purification and Storage

Purified from goat serum by ammonium sulphate precipitation followed by antigen affinity chromatography using the immunizing peptide.

Supplied at 0.5 mg/ml in Tris saline, 0.02% sodium azide, pH7.3 with 0.5% bovine serum albumin.

Aliquot and store at -20°C. Minimize freezing and thawing.

Applications Tested

Peptide ELISA: antibody detection limit dilution 1:32000.

IHC: Paraffin embedded Human Lung. Recommend concentration: 5µg/ml.

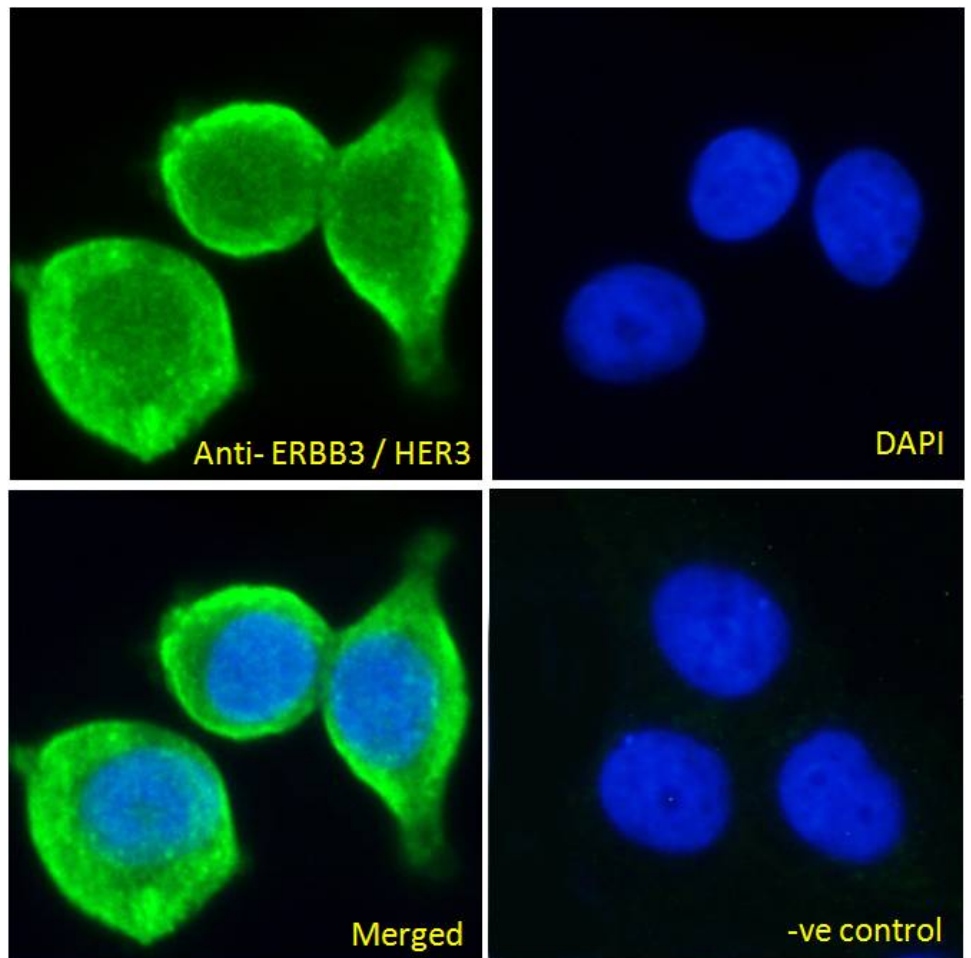
Immunofluorescence: Strong expression of the protein seen in the cytoplasm/ membranes of MCF7 cells. Recommended concentration: 10µg/ml.

Flow Cytometry: Flow cytometric analysis of MCF7 cells. Recommended concentration: 10ug/ml.

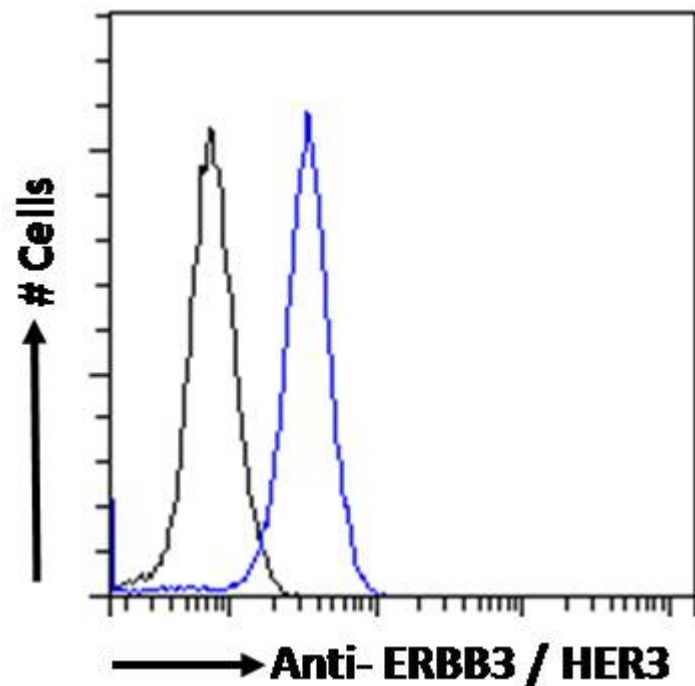
Species Reactivity

Tested: Human

Expected from sequence similarity: Human, Mouse, Rat, Dog, Pig, Cow

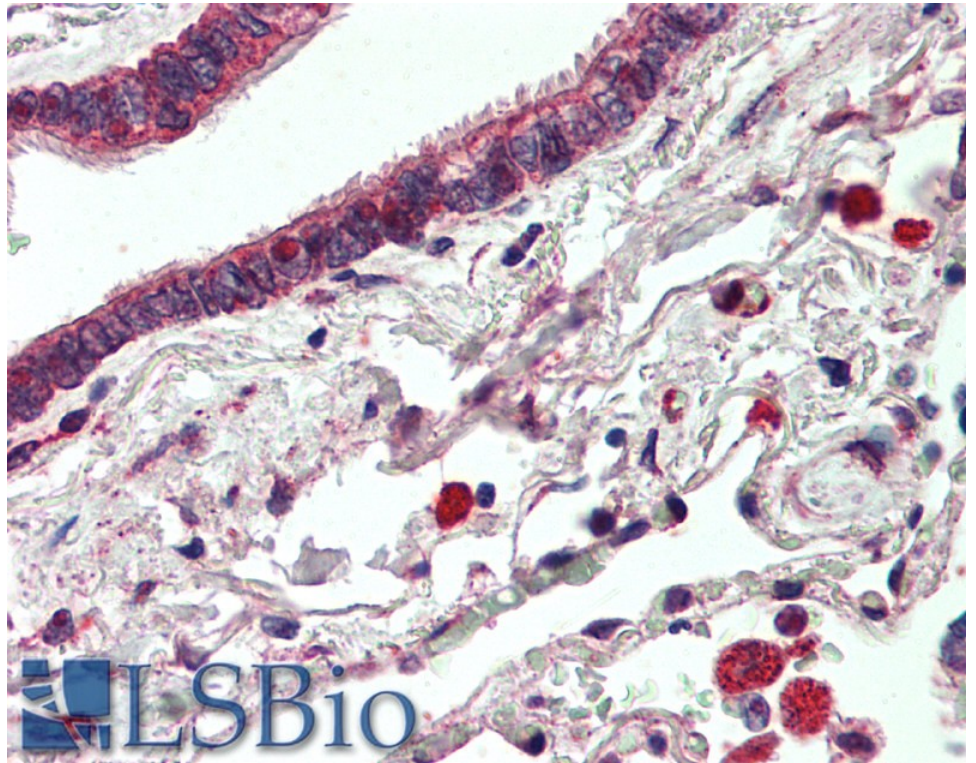


EB06903 Immunofluorescence analysis of paraformaldehyde fixed MCF7 cells, permeabilized with 0.15% Triton. Primary incubation 1hr (10ug/ml) followed by Alexa Fluor 488 secondary antibody (2ug/ml), showing plasma membrane/cytoplasmic staining. The nuclear stain is DAPI (blue). Negative control: Unimmunized goat IgG (10ug/ml) followed by Alexa Fluor 488 secondary antibody (2ug/ml).



EB06903 Flow cytometric analysis of paraformaldehyde fixed MCF7 cells (blue line), permeabilized with 0.5% Triton. Primary incubation 1hr (10ug/ml) followed by Alexa Fluor 488 secondary antibody (1ug/ml). IgG control:

Unimmunized goat IgG (black line) followed by Alexa Fluor 488 secondary antibody.



EB06903 (5µg/ml) staining of paraffin embedded Human Lung. Steamed antigen retrieval with citrate buffer pH 6, AP-staining.