



## UK Office

### Everest Biotech Ltd

Cherwell Innovation Centre  
77 Heyford Park  
Upper Heyford  
Oxfordshire  
OX25 5HD  
UK

Enquiries:

[info@everestbiotech.com](mailto:info@everestbiotech.com)

Sales:

[sales@everestbiotech.com](mailto:sales@everestbiotech.com)

Tech support:

[support@everestbiotech.com](mailto:support@everestbiotech.com)

Tel: +44 (0)1869 238326

Fax: +44 (0)1869 238327

## US Office

### Everest Biotech c/o Abcore

405 Maple Street, Suite A106  
Ramona,  
CA 92065  
USA

Inquiries:

[info@everestbiotech.com](mailto:info@everestbiotech.com)

Sales:

[usasales@everestbiotech.com](mailto:usasales@everestbiotech.com)

Tech support:

[support@everestbiotech.com](mailto:support@everestbiotech.com)

Tel: 888-320-4628 (toll-free)

Fax: 888-841-9041

[www.everestbiotech.com](http://www.everestbiotech.com)

**Research Use Only. Not for  
diagnostic or therapeutic use.**

## EB11429 - Goat Anti-ERCC6 (aa717-731) Antibody

Size: 100µg specific antibody in 200µl



### Target Protein

**Principal Names:** ARMD5, ATP-dependent helicase ERCC6, CKN2, Cockayne syndrome B protein, Cockayne syndrome group B protein, cockayne syndrome protein CSB, COFS, COFS1, CSB, DNA excision repair protein ERCC-6, excision repair cross-complementing rodent repair deficiency, complementation group 6, OTTHUMP00000019581, RAD26, Rad26 homolog, ERCC6

**Official Symbol:** ERCC6

**Accession Number(s):** NP\_000115.1

**Human GeneID(s):** [2074](#)

**Non-Human GeneID(s):** 319955 (mouse), 306274 (rat)

### Immunogen

Peptide with sequence SNAPVQVKTAYKCA, from the internal region of the protein sequence according to NP\_000115.1.

Please note the [peptide](#) is available for sale.

### Purification and Storage

Purified from goat serum by ammonium sulphate precipitation followed by antigen affinity chromatography using the immunizing peptide.

Supplied at 0.5 mg/ml in Tris saline, 0.02% sodium azide, pH7.3 with 0.5% bovine serum albumin.

Aliquot and store at -20°C. Minimize freezing and thawing.

### Applications Tested

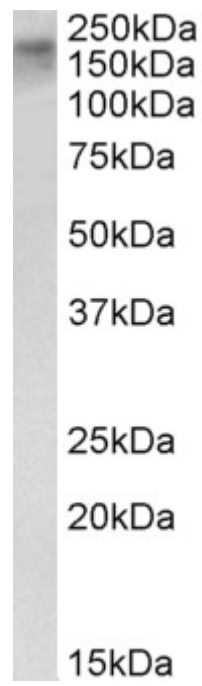
**Peptide ELISA:** antibody detection limit dilution 1:128000.

**Western blot:** Approx 170kDa band observed in nuclear lysates of cell line HeLa (calculated MW of 168kDa according to NP\_000115.1). Recommended concentration: 0.3-1µg/ml.

### Species Reactivity

**Tested:** Human

**Expected from sequence similarity:** Human, Mouse, Rat, Dog, Pig, Cow



EB11429 (0.3 $\mu$ g/ml) staining of HeLa nuclear lysate (35 $\mu$ g protein in RIPA buffer). Primary incubation was 1 hour. Detected by chemiluminescence.