

Research Use Only. Not for diagnostic or therapeutic use.

Storage: For long-term storage keep aliquots at -20°C. (Store no longer than 12 months at 4°C). Minimize freezing and thawing.

EB07081 - Goat Anti-ERG Antibody

Size: 100µg specific antibody in 200µl



Target Protein

Principal Names: ets-related, TMPRSS2-ERG prostate cancer specific, OTTHUMP00000208036, OTTHUMP00000115970, v-ets erythroblastosis virus E26 oncogene homolog (avian), v-ets erythroblastosis virus E26 oncogene like, v-ets avian erythroblastosis virus E26 oncogene related, transcriptional regulator ERG (transforming protein ERG), p55, erg-3, HGNC:3446, v-ets erythroblastosis virus E26 oncogene like (avian), ERG

Official Symbol: ERG

Accession Number(s): NP_891548.1; NP_004440.1; NP_001129626.1; NP_001129627.1; NP_001230358.1

Human GeneID(s): [2078](#)

Non-Human GeneID(s): 13876 (mouse), 170909 (rat)

Important Comments: This antibody is expected to recognise all reported isoforms (NP_891548.1; NP_004440.1; NP_001129626.1; NP_001129627.1; NP_001230358.1)

Immunogen

Peptide with sequence C-PNTRLPTSHMP SH, from the C Terminus of the protein sequence according to NP_891548.1; NP_004440.1; NP_001129626.1; NP_001129627.1; NP_001230358.1].

Please note the [peptide](#) is available for sale.

Purification and Storage

Purified from goat serum by ammonium sulphate precipitation followed by antigen affinity chromatography using the immunizing peptide.

Supplied at 0.5 mg/ml in Tris saline, 0.02% sodium azide, pH7.3 with 0.5% bovine serum albumin.

Aliquot and store at -20°C. Minimize freezing and thawing.

Applications Tested

Peptide ELISA: antibody detection limit dilution 1:32000.

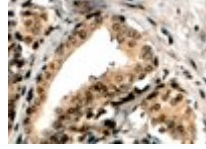
Western blot: Preliminary experiments in lysates of cell lines HEK293, A431 and Jurkat gave no specific signal but low background (at antibody concentration up to 1µg/ml). We would appreciate any feedback from people in the field - have any results been reported with other antibodies/lysates?

IHC: In paraffin embedded Human Prostate shows nuclear staining in secretory cells of the glands. Recommended concentration, 4-8µg/ml.

Species Reactivity

Tested: Human

Expected from sequence similarity: Human, Mouse, Rat



EB07081 (4 μ g/ml) staining of paraffin embedded Human Prostate. Steamed antigen retrieval with Tris/EDTA buffer pH 9, HRP-staining.