



## UK Office

### Everest Biotech Ltd

Cherwell Innovation Centre  
77 Heyford Park  
Upper Heyford  
Oxfordshire  
OX25 5HD  
UK

Enquiries:

[info@everestbiotech.com](mailto:info@everestbiotech.com)

Sales:

[sales@everestbiotech.com](mailto:sales@everestbiotech.com)

Tech support:

[support@everestbiotech.com](mailto:support@everestbiotech.com)

Tel: +44 (0)1869 238326

Fax: +44 (0)1869 238327

## US Office

### Everest Biotech c/o Abcore

405 Maple Street, Suite A106  
Ramona,  
CA 92065  
USA

Inquiries:

[info@everestbiotech.com](mailto:info@everestbiotech.com)

Sales:

[usasales@everestbiotech.com](mailto:usasales@everestbiotech.com)

Tech support:

[support@everestbiotech.com](mailto:support@everestbiotech.com)

Tel: 888-320-4628 (toll-free)

Fax: 888-841-9041

[www.everestbiotech.com](http://www.everestbiotech.com)

**Research Use Only. Not for  
diagnostic or therapeutic use.**

## EB06592 - Goat Anti-ERK2 / MAPK1 Antibody

Size: 100µg specific antibody in 200µl



### Target Protein

**Principal Names:** MAPK1, ERK2, ERK, p38, p40, p41, ERT1, MAPK2, PRKM1, PRKM2, P42MAPK, p41mapk, mitogen-activated protein kinase 1, protein tyrosine kinase ERK2, mitogen-activated protein kinase 2, extracellular signal-regulated kinase 2

**Official Symbol:** MAPK1

**Accession Number(s):** NP\_002736.3; NP\_620407.1

**Human GeneID(s):** [5594](#)

**Non-Human GeneID(s):** 26413 (mouse)

**Important Comments:** This antibody is expected to recognise an epitope corresponding to aa 9-19 of both reported protein isoforms of human ERK2 / MAPK1 protein.

### Immunogen

Peptide with sequence CAAGPEMVRGQVF, from the internal region of the protein sequence according to NP\_002736.3; NP\_620407.1.

Please note the [peptide](#) is available for sale.

### Purification and Storage

Purified from goat serum by ammonium sulphate precipitation followed by antigen affinity chromatography using the immunizing peptide.

Supplied at 0.5 mg/ml in Tris saline, 0.02% sodium azide, pH7.3 with 0.5% bovine serum albumin.

Aliquot and store at -20°C. Minimize freezing and thawing.

### Applications Tested

**Peptide ELISA:** antibody detection limit dilution 1:8000.

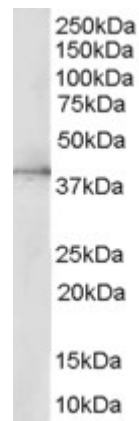
**Western blot:** Approx 38kDa band observed in HepG2 lysates (calculated MW of 41.4kDa according to NP\_002736 and NP\_620407). Recommended concentration: 0.5-2µg/ml. Primary incubation was 1 hour.

**Immunofluorescence:** Strong expression of the protein seen in the cytoplasm of U251 cells. Recommended concentration: 10µg/ml.

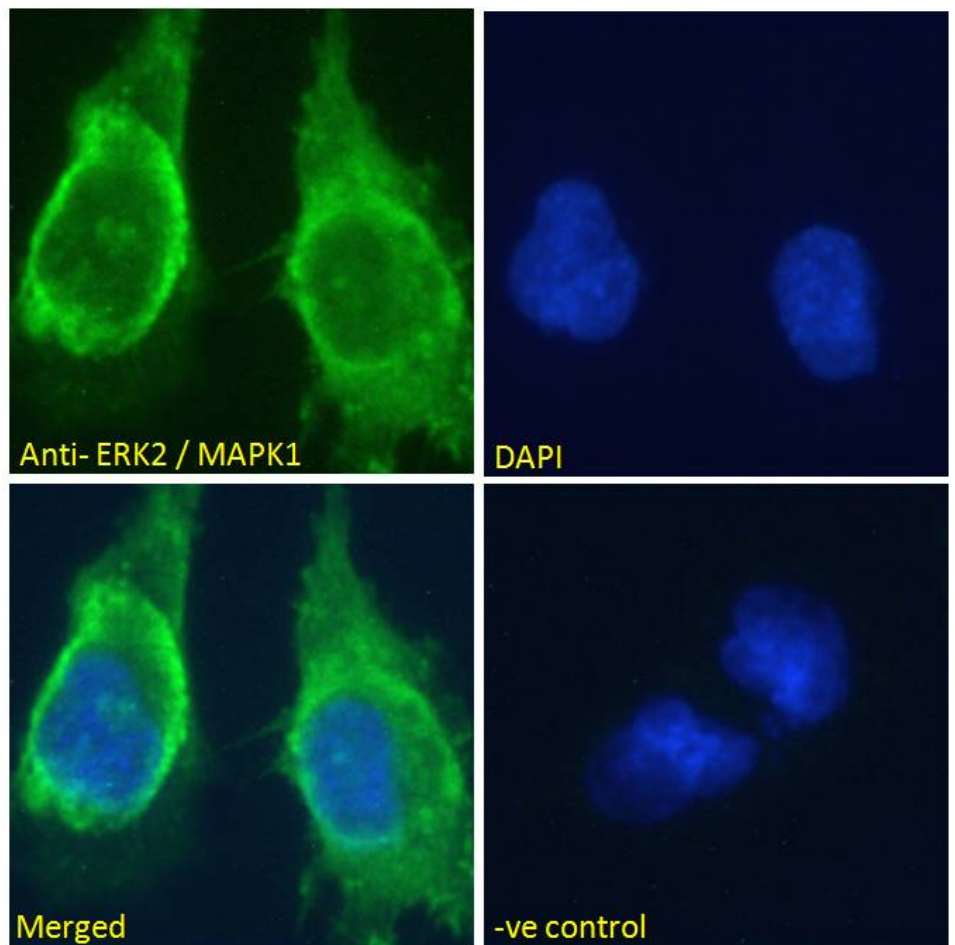
### Species Reactivity

**Tested:** Human

**Expected from sequence similarity:** Human, Mouse, Rat, Dog, Cow



EB06592 (0.5 $\mu$ g/ml) staining of HepG2 lysate (35 $\mu$ g protein in RIPA buffer). Detected by chemiluminescence.



EB06592 Immunofluorescence analysis of paraformaldehyde fixed U251 cells, permeabilized with 0.15% Triton. Primary incubation 1hr (10 $\mu$ g/ml) followed by Alexa Fluor 488 secondary antibody (2 $\mu$ g/ml), showing cytoplasmic staining. The nuclear stain is DAPI (blue). Negative control: Unimmunized goat IgG (10 $\mu$ g/ml) followed by Alexa Fluor 488 secondary antibody (2 $\mu$ g/ml).