

## UK Office

### Everest Biotech Ltd

Cherwell Innovation Centre  
77 Heyford Park  
Upper Heyford  
Oxfordshire  
OX25 5HD  
UK

Enquiries:

[info@everestbiotech.com](mailto:info@everestbiotech.com)

Sales:

[sales@everestbiotech.com](mailto:sales@everestbiotech.com)

Tech support:

[support@everestbiotech.com](mailto:support@everestbiotech.com)

Tel: +44 (0)1869 238326

[www.everestbiotech.com](http://www.everestbiotech.com)

**Research Use Only. Not for  
diagnostic or therapeutic use.**

## EB08559 - Goat Anti-ERN1 / IRE1a Antibody

Size: 100µg specific antibody in 200µl



### Target Protein

**Principal Names:** ERN1, IRE1, endoplasmic reticulum to nucleus signaling 1, FLJ30999, IRE1P, MGC163277, MGC163279, ER to nucleus signalling 1, endoplasmic reticulum to nucleus signalling 1, inositol-requiring 1, protein kinase/endoribonuclease, IRE1a, IRE1-alpha

**Official Symbol:** ERN1

**Accession Number(s):** NP\_001424.3

**Human GeneID(s):** [2081](#)

**Non-Human GeneID(s):** 78943 (mouse), 498013 (rat)

### Immunogen

Peptide with sequence C-PNAHGKIKAMISD, from the internal region of the protein sequence according to NP\_001424.3.

Please note the [peptide](#) is available for sale.

### Purification and Storage

Purified from goat serum by ammonium sulphate precipitation followed by antigen affinity chromatography using the immunizing peptide.

Supplied at 0.5 mg/ml in Tris saline, 0.02% sodium azide, pH7.3 with 0.5% bovine serum albumin.

Aliquot and store at -20°C. Minimize freezing and thawing.

### Applications Tested

**Peptide ELISA:** antibody detection limit dilution 1:16000.

**Western blot:** Approx 110kDa band observed in Human Pancreas and Duodenum lysates (calculated MW of 110kDa according to NP\_001424.3). Recommended concentration: 0.1-0.3µg/ml. Primary incubation 1 hour at room temperature.

**Flow Cytometry:** Flow cytometric analysis of HeLa cells. Recommended concentration: 10ug/ml.

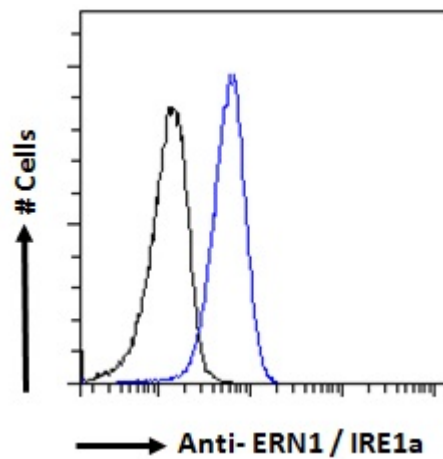
### Species Reactivity

**Tested:** Human

**Expected from sequence similarity:** Human, Mouse, Rat, Dog, Pig, Cow



EB08559 (0.3µg/ml) staining of Human Duodenum (A) and (0.1ug/ml) Pancreas (B) lysate (35µg protein in RIPA buffer). Detected by chemiluminescence



EB08559 Flow cytometric analysis of paraformaldehyde fixed HeLa cells (blue line), permeabilized with 0.5% Triton. Primary incubation 1hr (10ug/ml) followed by Alexa Fluor 488 secondary antibody (1ug/ml). IgG control: Unimmunized goat IgG (black line) followed by Alexa Fluor 488 secondary antibody.