



UK Office

Everest Biotech Ltd

Cherwell Innovation Centre
77 Heyford Park
Upper Heyford
Oxfordshire
OX25 5HD
UK

Enquiries:

info@everestbiotech.com

Sales:

sales@everestbiotech.com

Tech support:

support@everestbiotech.com

Tel: +44 (0)1869 238326

Fax: +44 (0)1869 238327

US Office

Everest Biotech c/o Abcore

405 Maple Street, Suite A106
Ramona,
CA 92065
USA

Inquiries:

info@everestbiotech.com

Sales:

usasales@everestbiotech.com

Tech support:

support@everestbiotech.com

Tel: 888-320-4628 (toll-free)

Fax: 888-841-9041

www.everestbiotech.com

**Research Use Only. Not for
diagnostic or therapeutic use.**

EB08977 - Goat Anti-ERP29 Antibody

Size: 100µg specific antibody in 200µl



Target Protein

Principal Names: ERP29, endoplasmic reticulum protein 29, C12orf8, ERp28, ERp31, PDI-DB, endoplasmic reticulum luminal protein ERp28

Official Symbol: ERP29

Accession Number(s): NP_006808.1

Human GeneID(s): [10961](#)

Non-Human GeneID(s): 67397 (mouse), 117030 (rat)

Important Comments: This antibody is expected to recognize isoform 1 (NP_006808.1) only.

Immunogen

Peptide with sequence C-EKNKMSDGKKEELQ, from the C Terminus of the protein sequence according to NP_006808.1.

Please note the [peptide](#) is available for sale.

Purification and Storage

Purified from goat serum by ammonium sulphate precipitation followed by antigen affinity chromatography using the immunizing peptide.

Supplied at 0.5 mg/ml in Tris saline, 0.02% sodium azide, pH7.3 with 0.5% bovine serum albumin.

Aliquot and store at -20°C. Minimize freezing and thawing.

Applications Tested

Peptide ELISA: antibody detection limit dilution 1:2000.

Western blot: Approx. 28kDa band observed in Human Liver lysates (calculated MW of 29.0kDa according to NP_006808.1). Recommended concentration: 0.1-0.3µg/ml. Primary incubation was 1 hour. This product has been successfully used in WB on Rat: Gao J et al, Mol Med Rep. 2016 Jan;13(1):398-402. PMID: 26548430.

Immunofluorescence: This product has been successfully used in IF on Rat: Gao J et al, Mol Med Rep. 2016 Jan;13(1):398-402. PMID: 26548430.

Species Reactivity

Tested: Human, Rat

Expected from sequence similarity: Human, Rat, Dog, Pig, Cow

Specific Reference

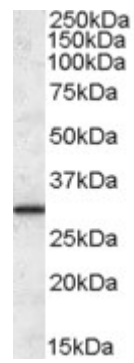
This antibody has been successfully used in WB and IF on Rat:

Gao J, Zhang Y, Wang L, Xia L, Lu M, Zhang B, Chen Y, He L.

Endoplasmic reticulum protein 29 is involved in endoplasmic reticulum stress in islet beta cells.

Mol Med Rep. 2016 Jan;13(1):398-402.

PMID: 26548430



EB08977 (0.1µg/ml) staining of Human Liver lysate (35µg protein in RIPA buffer). Detected by chemiluminescence.