



UK Office

Everest Biotech Ltd

Cherwell Innovation Centre
77 Heyford Park
Upper Heyford
Oxfordshire
OX25 5HD
UK

Enquiries:

info@everestbiotech.com

Sales:

sales@everestbiotech.com

Tech support:

support@everestbiotech.com

Tel: +44 (0)1869 238326

Fax: +44 (0)1869 238327

US Office

Everest Biotech c/o Abcore

405 Maple Street, Suite A106
Ramona,
CA 92065
USA

Inquiries:

info@everestbiotech.com

Sales:

usasales@everestbiotech.com

Tech support:

support@everestbiotech.com

Tel: 888-320-4628 (toll-free)

Fax: 888-841-9041

www.everestbiotech.com

**Research Use Only. Not for
diagnostic or therapeutic use.**

EB08367 - Goat Anti-ESRRG Antibody

Size: 100µg specific antibody in 200µl



Target Protein

Principal Names: ESRRG, DKFZp781L1617, Estrogen-related receptor gamma, ERR3, FLJ16023, KIAA0832, NR3B3

Official Symbol: ESRRG

Accession Number(s): NP_001429.2; NP_996317.1; NP_996318.1

Human GeneID(s): [2104](#)

Non-Human GeneID(s): 26381 (mouse)

Important Comments: This antibody is expected to recognise the reported isoform NP_001429.2.

Immunogen

Peptide with sequence CRMSNKDRHIDS, from the internal region of the protein sequence according to NP_001429.2; NP_996317.1; NP_996318.1.

Please note the [peptide](#) is available for sale.

Purification and Storage

Purified from goat serum by ammonium sulphate precipitation followed by antigen affinity chromatography using the immunizing peptide.

Supplied at 0.5 mg/ml in Tris saline, 0.02% sodium azide, pH7.3 with 0.5% bovine serum albumin.

Aliquot and store at -20°C. Minimize freezing and thawing.

Applications Tested

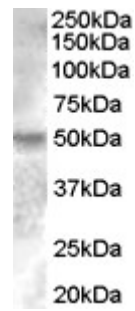
Peptide ELISA: antibody detection limit dilution 1:16000.

Western blot: Approx. 50kDa band observed in Human Brain (Cerebellum) and Breast lysates (calculated MW of 51.3kDa according to NP_NP_001429.2). In transfected HEK293 transiently expressing ESRRG a band of approx. 52kDa is observed. This band is not observed in the non-transfected HEK293. Recommended concentration: 0.2-0.6µg/ml.

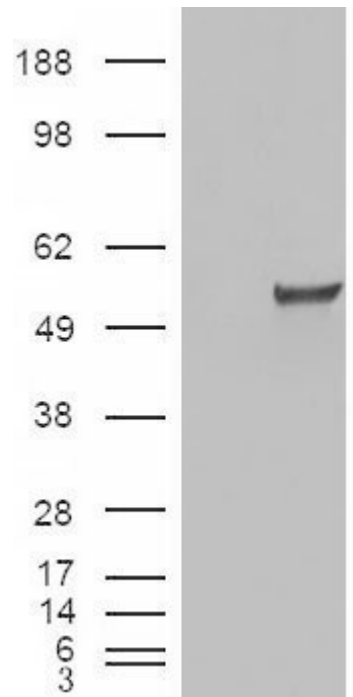
Species Reactivity

Tested: Human

Expected from sequence similarity: Human, Mouse, Dog



EB08367 (0.2µg/ml) staining of Human Breast lysate (35µg protein in RIPA buffer). Primary incubation was 1 hour. Detected by chemiluminescence.



HEK293 overexpressing ESRRG (RC218233) and probed with EB08367 (mock transfection in first lane), tested by Origene.