



## UK Office

### Everest Biotech Ltd

Cherwell Innovation Centre  
77 Heyford Park  
Upper Heyford  
Oxfordshire  
OX25 5HD  
UK

Enquiries:

[info@everestbiotech.com](mailto:info@everestbiotech.com)

Sales:

[sales@everestbiotech.com](mailto:sales@everestbiotech.com)

Tech support:

[support@everestbiotech.com](mailto:support@everestbiotech.com)

Tel: +44 (0)1869 238326

Fax: +44 (0)1869 238327

## US Office

### Everest Biotech c/o Abcore

405 Maple Street, Suite A106  
Ramona,  
CA 92065  
USA

Inquiries:

[info@everestbiotech.com](mailto:info@everestbiotech.com)

Sales:

[usasales@everestbiotech.com](mailto:usasales@everestbiotech.com)

Tech support:

[support@everestbiotech.com](mailto:support@everestbiotech.com)

Tel: 888-320-4628 (toll-free)

Fax: 888-841-9041

[www.everestbiotech.com](http://www.everestbiotech.com)

**Research Use Only. Not for  
diagnostic or therapeutic use.**

## EB05911 - Goat Anti-EVC2 / Limbin Antibody

Size: 100µg specific antibody in 200µl



### Target Protein

**Principal Names:** EVC2, LBN, LIMBIN, Ellis van Creveld syndrome 2 (limbin), limbin

**Official Symbol:** EVC2

**Accession Number(s):** NP\_667338.3; NP\_001159608.1

**Human GeneID(s):** [132884](#)

**Important Comments:** This antibody is expected to recognise isoform 1 (NP\_667338.3) and isoform 2 (NP\_001159608.1).

### Immunogen

Peptide with sequence C-LNAKKAMRALGMD, from the C Terminus of the protein sequence according to NP\_667338.3; NP\_001159608.1.

Please note the [peptide](#) is available for sale.

### Purification and Storage

Purified from goat serum by ammonium sulphate precipitation followed by antigen affinity chromatography using the immunizing peptide.

Supplied at 0.5 mg/ml in Tris saline, 0.02% sodium azide, pH7.3 with 0.5% bovine serum albumin.

Aliquot and store at -20°C. Minimize freezing and thawing.

### Applications Tested

**Peptide ELISA:** antibody detection limit dilution 1:16000.

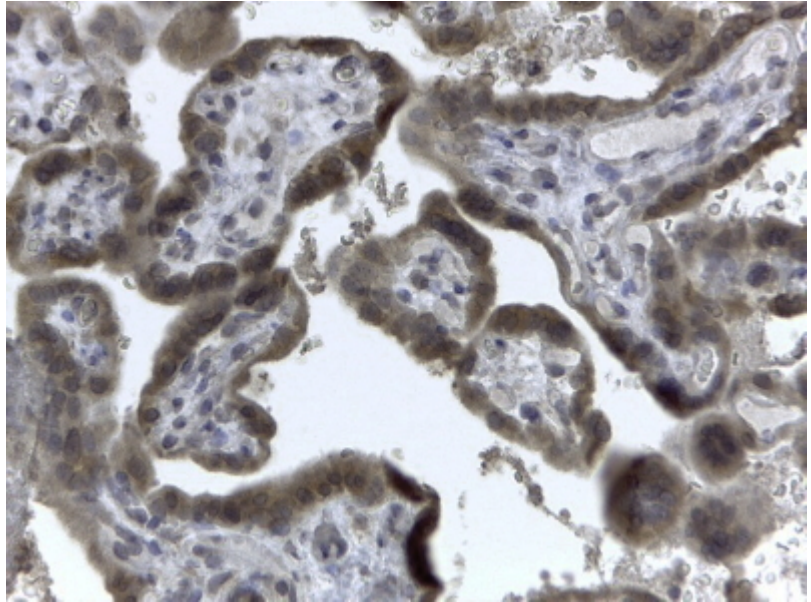
**Western blot:** A customer reported that a consistent band was observed in 293 and human heart at approx 75kDa with 1 hour incubation of primary at 0.5ug/ml.

**IHC:** In paraffin embedded Human Placenta shows strong staining of the cytotrophoblasts. Recommended concentration, 2-4µg/ml.

### Species Reactivity

**Tested:** Human

**Expected from sequence similarity:** Human



EB05911 (2µg/ml) staining of paraffin embedded Human Placenta. Steamed antigen retrieval with citrate buffer pH 6, HRP-staining.