



UK Office

Everest Biotech Ltd

Cherwell Innovation Centre
77 Heyford Park
Upper Heyford
Oxfordshire
OX25 5HD
UK

Enquiries:

info@everestbiotech.com

Sales:

sales@everestbiotech.com

Tech support:

support@everestbiotech.com

Tel: +44 (0)1869 238326

Fax: +44 (0)1869 238327

US Office

Everest Biotech c/o Abcore

405 Maple Street, Suite A106
Ramona,
CA 92065
USA

Inquiries:

info@everestbiotech.com

Sales:

usasales@everestbiotech.com

Tech support:

support@everestbiotech.com

Tel: 888-320-4628 (toll-free)

Fax: 888-841-9041

www.everestbiotech.com

**Research Use Only. Not for
diagnostic or therapeutic use.**

EB07225 - Goat Anti-EXOC7 Antibody

Size: 100µg specific antibody in 200µl



Target Protein

Principal Names: EXOC7, exocyst complex component 7, HGNC:23214, 2-5-3p, EXO70, Exo70p, YJL085W

Official Symbol: EXOC7

Accession Number(s): NP_001013861.1; NP_056034.2; NP_001138769.1;
NP_001138771.1; NP_001138770.1

Human GeneID(s): [23265](#)

Important Comments: This antibody is expected to recognise all five reported isoforms (NP_001013861.1; NP_056034.2; NP_001138769.1; NP_001138771.1; NP_001138770.1).

Immunogen

Peptide with sequence C-DNIKNDPDKEYN, from the internal region of the protein sequence according to NP_001013861.1; NP_056034.2; NP_001138769.1; NP_001138771.1; NP_001138770.1.

Please note the [peptide](#) is available for sale.

Purification and Storage

Purified from goat serum by ammonium sulphate precipitation followed by antigen affinity chromatography using the immunizing peptide.

Supplied at 0.5 mg/ml in Tris saline, 0.02% sodium azide, pH7.3 with 0.5% bovine serum albumin.

Aliquot and store at -20°C. Minimize freezing and thawing.

Applications Tested

Peptide ELISA: antibody detection limit dilution 1:16000.

Western blot: Approx 70kDa band observed in Human Lung lysates (calculated MW of 74.7kDa according to NP_056034.2). Recommended concentration: 0.5-1.5µg/ml.

IHC: In paraffin embedded Human Adrenal Gland shows staining of cytoplasm membranes and cytoplasm of secretory cells in the medulla. Recommended concentration, 5-10µg/ml.

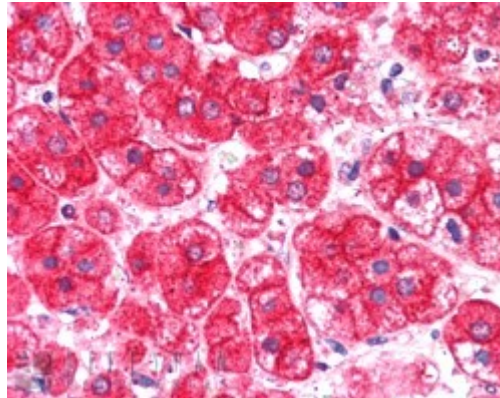
Species Reactivity

Tested: Human

Expected from sequence similarity: Human, Mouse, Rat, Pig, Cow



EB07225 (0.5µg/ml) staining of Human Lung lysate (35µg protein in RIPA buffer). Primary incubation was 1 hour. Detected by chemiluminescence.



EB07225 (0.5µg/ml) staining of paraffin embedded Human Pancreas. Steamed antigen retrieval with citrate buffer pH 6, AP-staining.