



Everest Biotech Ltd
Cherwell Innovation Centre
77 Heyford Park
Upper Heyford
Oxfordshire
OX25 5HD, United Kingdom

everestbiotech.com

sales@everestbiotech.com

support@everestbiotech.com

Tel +44 1869 238326

Fax +44 1869 238327

**Research Use Only. Not for
diagnostic or therapeutic use.**

Storage: For long-term storage
keep aliquots at -20°C. (Store no
longer than 12 months at 4°C).
Minimize freezing and thawing.

EB07305 - Goat Anti-Ezrin / villin 2 Antibody

Size: 100µg specific antibody in 200µl



Target Protein

Principal Names: villin 2, cytovillin, MGC1584, FLJ26216, DKFZp762H157, CVL, CVIL, VIL2, ezrin, villin 2 (ezrin)

Official Symbol: VIL2

Accession Number(s): NP_003370.2

Human GeneID(s): [7430](#)

Non-Human GeneID(s): 22350 (mouse), 54319 (rat)

Immunogen

Peptide with sequence C-QDYEEKTKKAER, from the internal region of the protein sequence according to NP_003370.2.

Please note the [peptide](#) is available for sale.

Purification and Storage

Purified from goat serum by ammonium sulphate precipitation followed by antigen affinity chromatography using the immunizing peptide.

Supplied at 0.5 mg/ml in Tris saline, 0.02% sodium azide, pH7.3 with 0.5% bovine serum albumin.

Aliquot and store at -20°C. Minimize freezing and thawing.

Applications Tested

Peptide ELISA: antibody detection limit dilution 1:16000.

Western blot: Approx 80kDa band observed in Human Duodenum and Placenta lysates (calculated MW of 69.4kDa according to NP_003370.2). The observed molecular weight corresponds to earlier findings in literature with different antibodies (Zhu et al, Am J Physiol Cell Physiol. 2005 Jun;288(6):C1242-54.; PMID: 15788482). Recommended concentration: 1-3µg/ml.

IHC: In paraffin embedded Human Small Intestine shows strong staining of enterocytes. Recommended concentration, 3-5µg/ml.

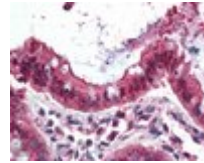
Species Reactivity

Tested: Human

Expected from sequence similarity: Human, Dog



EB07305 (1 μ g/ml) staining of Human Placenta lysate (35 μ g protein in RIPA buffer). Primary incubation was 1 hour. Detected by chemiluminescence.



EB07305 (3.8 μ g/ml) staining of paraffin embedded Human Small Intestine. Steamed antigen retrieval with citrate buffer pH 6, AP-staining.