



Everest Biotech Ltd  
Cherwell Innovation Centre  
77 Heyford Park  
Upper Heyford  
Oxfordshire  
OX25 5HD, United Kingdom

[everestbiotech.com](http://everestbiotech.com)

[sales@everestbiotech.com](mailto:sales@everestbiotech.com)

[support@everestbiotech.com](mailto:support@everestbiotech.com)

Tel +44 1869 238326

Fax +44 1869 238327

**Research Use Only. Not for diagnostic or therapeutic use.**

Storage: For long-term storage keep aliquots at -20°C. (Store no longer than 12 months at 4°C). Minimize freezing and thawing.

## EB09489 - Goat Anti-F11R / JAM-A Antibody

Size: 100µg specific antibody in 200µl



### Target Protein

**Principal Names:** platelet adhesion molecule, platelet F11 receptor, junctional adhesion molecule A, junctional adhesion molecule 1, OTTHUMP00000027881, OTTHUMP00000027880, PAM-1, KAT, JCAM, JAMA, JAM1, JAM-A, JAM-1, JAM, CD321, F11 receptor, F11R

**Official Symbol:** F11R

**Accession Number(s):** NP\_058642.1

**Human GeneID(s):** [50848](#)

**Non-Human GeneID(s):** 16456 (mouse), 116479 (rat)

### Immunogen

Peptide with sequence C-QPSARSEGEFKQTS, from the C Terminus of the protein sequence according to NP\_058642.1.

Please note the [peptide](#) is available for sale.

### Purification and Storage

Purified from goat serum by ammonium sulphate precipitation followed by antigen affinity chromatography using the immunizing peptide.

Supplied at 0.5 mg/ml in Tris saline, 0.02% sodium azide, pH7.3 with 0.5% bovine serum albumin.

Aliquot and store at -20°C. Minimize freezing and thawing.

### Applications Tested

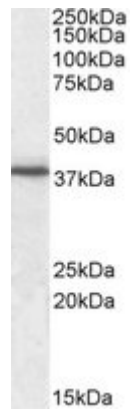
**Peptide ELISA:** antibody detection limit dilution 1:2000.

**Western blot:** Approx 38kDa band observed in Human Peripheral Blood Mononucleocyte lysates (calculated MW of 32.6kDa according to NP\_058642.1). The observed molecular weight corresponds to earlier findings with different antibodies from other commercial sources. Recommended concentration: 0.3-2µg/ml.

### Species Reactivity

**Tested:** Human

**Expected from sequence similarity:** Human, Mouse, Rat, Dog, Pig



EB09489 (0.3µg/ml) staining of Human Peripheral Blood Mononucleocyte lysate (35µg protein in RIPA buffer).  
Primary incubation was 1 hour. Detected by chemiluminescence.