



UK Office

Everest Biotech Ltd

Cherwell Innovation Centre
77 Heyford Park
Upper Heyford
Oxfordshire
OX25 5HD
UK

Enquiries:

info@everestbiotech.com

Sales:

sales@everestbiotech.com

Tech support:

support@everestbiotech.com

Tel: +44 (0)1869 238326

Fax: +44 (0)1869 238327

US Office

Everest Biotech c/o Abcore

405 Maple Street, Suite A106
Ramona,
CA 92065
USA

Inquiries:

info@everestbiotech.com

Sales:

usasales@everestbiotech.com

Tech support:

support@everestbiotech.com

Tel: 888-320-4628 (toll-free)

Fax: 888-841-9041

www.everestbiotech.com

**Research Use Only. Not for
diagnostic or therapeutic use.**

EB06987 - Goat Anti-FACT / SUPT16H Antibody

Size: 100µg specific antibody in 200µl



Target Protein

Principal Names: SUPT16H, FACT, suppressor of Ty 16 homolog (*S. cerevisiae*), HGNC:11465, CDC68, FACTP140, FLJ10857, FLJ14010, SPT16/CDC68, chromatin-specific transcription elongation factor large subunit, FLJ34357, facilitates chromatin remodeling 140 kDa subunit

Official Symbol: SUPT16H

Accession Number(s): NP_009123.1

Human GeneID(s): [11198](#)

Immunogen

Peptide with sequence C-DLTNKEGKKPEEK, from the internal region of the protein sequence according to NP_009123.1.

Please note the [peptide](#) is available for sale.

Purification and Storage

Purified from goat serum by ammonium sulphate precipitation followed by antigen affinity chromatography using the immunizing peptide.

Supplied at 0.5 mg/ml in Tris saline, 0.02% sodium azide, pH7.3 with 0.5% bovine serum albumin.

Aliquot and store at -20°C. Minimize freezing and thawing.

Applications Tested

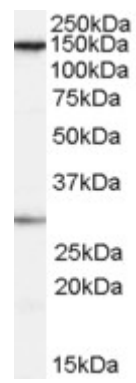
Peptide ELISA: antibody detection limit dilution 1:8000.

Western blot: Approx 150kDa band observed in lysates of cell line HeLa (calculated MW of 120kDa according to NP_009123.1). Recommended concentration: 0.1-0.3µg/ml. An additional band of unknown identity was also consistently observed at 30kDa. This band was successfully blocked by incubation with the immunising peptide. Primary incubation was 1 hour.

Species Reactivity

Tested: Human

Expected from sequence similarity: Human, Mouse, Pig, Cow



EB06987 (0.1µg/ml) staining of HeLa cell lysate (35µg protein in RIPA buffer). Detected by chemiluminescence.