



UK Office

Everest Biotech Ltd

Cherwell Innovation Centre
77 Heyford Park
Upper Heyford
Oxfordshire
OX25 5HD
UK

Enquiries:

info@everestbiotech.com

Sales:

sales@everestbiotech.com

Tech support:

support@everestbiotech.com

Tel: +44 (0)1869 238326

Fax: +44 (0)1869 238327

US Office

Everest Biotech c/o Abcore

405 Maple Street, Suite A106
Ramona,
CA 92065
USA

Inquiries:

info@everestbiotech.com

Sales:

usasales@everestbiotech.com

Tech support:

support@everestbiotech.com

Tel: 888-320-4628 (toll-free)

Fax: 888-841-9041

www.everestbiotech.com

**Research Use Only. Not for
diagnostic or therapeutic use.**

EB07613 - Goat Anti-FAIM1 Antibody

Size: 100µg specific antibody in 200µl



Target Protein

Principal Names: FAIM1, FAIM, Fas apoptotic inhibitory molecule

Official Symbol: FAIM

Accession Number(s): NP_001028202.1; NP_001028203.1; NP_001028204.1;
NP_060617.1

Human GeneID(s): [55179](#)

Non-Human GeneID(s): 23873 (mouse), 140930 (rat)

Important Comments: This antibody is expected to recognise all reported isoforms
(NP_001028202.1; NP_001028203.1; NP_001028204.1; NP_060617.1).

Immunogen

Peptide with sequence C-KKYMEDRSKTTN, from the internal region of the protein
sequence according to NP_001028202.1; NP_001028203.1; NP_001028204.1;
NP_060617.1.

Please note the [peptide](#) is available for sale.

Purification and Storage

Purified from goat serum by ammonium sulphate precipitation followed by antigen affinity
chromatography using the immunizing peptide.

Supplied at 0.5 mg/ml in Tris saline, 0.02% sodium azide, pH7.3 with 0.5% bovine serum
albumin.

Aliquot and store at -20°C. Minimize freezing and thawing.

Applications Tested

Peptide ELISA: antibody detection limit dilution 1:32000.

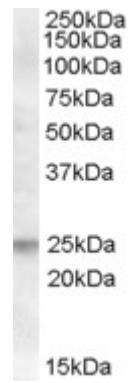
Western blot: Approx 25kDa band observed in Human Lymph Node lysates (calculated
MW of 24.0kDa according to NP_001028202.1). Recommended concentration:
0.5-1µg/ml.

IHC: In paraffin embedded Human Placenta shows cytoplasm staining of trophoblasts.
Recommended concentration, 2-3µg/ml.

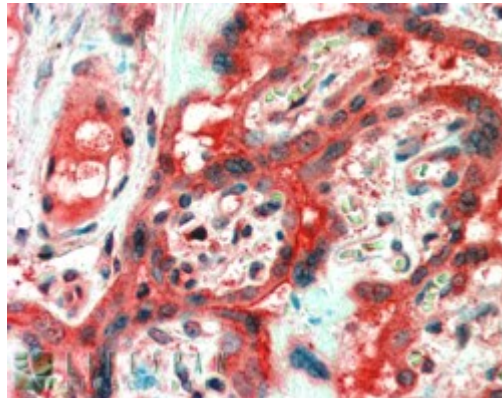
Species Reactivity

Tested: Human

Expected from sequence similarity: Human, Mouse, Rat, Dog



EB07613 (0.5 μ g/ml) staining of Human Lymph Node lysate (35 μ g protein in RIPA buffer). Primary incubation was 1 hour. Detected by chemiluminescence.



EB07613 (2.5 μ g/ml) staining of paraffin embedded Human Placenta. Steamed antigen retrieval with citrate buffer pH 6, AP-staining.